

# LANTSQ1795

## Installation Instructions

Lankota GENERATION II Stalk Stomper® Mounting Kit for Case IH® Quad Trac

# LANKOTA®

**270 West Park Avenue  
Huron, SD 57350  
866-526-5682**

# Numerical Parts List

| Part Numbers       | Description                            | Qty |
|--------------------|--|-----|
| LANSSQT240RBLK     | Quad Track Right Bracket               | 1   |
| LANSSQT240LBLK     | Quad Track Left Bracket                | 1   |
| LANSSQT253RBLK     | Quad Track Right Arm                   | 1   |
| LANSSQT253LBLK     | Quad Track Left Arm                    | 1   |
| LANSSQT264BLK      | Adjustable Stop                        | 6   |
| LANSSQT267BLK      | 2.5" Pin Cap                           | 2   |
| LANSSQT268         | 2.5" Pin                               | 2   |
| LANSS672A-BLK      | Bolt on Stalk Stomper Arm Assembly     | 4   |
| LANSS673-42200-BLK | 42" Bolt On Stalk Stomper Shoe - Black | 2   |
| LANHH4J6-310       | 310" Hydraulic Hose                    | 2   |
| LANHH4J6-60        | 60" Hydraulic Hose                     | 4   |
| LANSS5126          | 2 x 6 Cylinder                         | 2   |
| LANSS5149          | Hyd Fitting Bag—Tractor SS             | 1   |

# Numerical Parts List

| Part Numbers        | Description                      | Qty      |
|---------------------|----------------------------------|----------|
| <b>LANTSQ1795BH</b> | <b>Bag of Hardware Includes:</b> | <b>1</b> |
| RED706K             | 5/8"-11 x 1-1/2" Carriage Bolt   | 20       |
| REDB706             | 5/8"-11 x 1-1/2" Bolt            | 2        |
| REDB712             | 5/8"-11 x 3" Bolt                | 4        |
| LAN690830           | 5/8" Serrated Flange Nut         | 24       |
| LANFRCRF            | M20 x 220 Gr 10.9 Bolt           | 6        |
| LANF-FW-M20         | M20 Flat Washer                  | 6        |
| REDB306             | 3/8" x 1.5" Hex Bolt             | 2        |
| RED0DTT             | 3/8" Top Lock Nut                | 2        |
| LANFFE3P            | 1" x 4.5" Clevis Pin             | 2        |
| LANFHWMW            | 1" x 5" Clevis Pin               | 2        |
| LANFWS50            | 1" SAE Flat Washer               | 4        |
| LANF01F0            | 3/16" x 2-1/4" Cotter Pin        | 4        |
| LAN44302            | Zip Ties                         | 20       |
| LANF3231            | 1/4"-28 Grease Zerk              | 4        |
| LANSS704            | 1/2" Twist Lock Pin              | 1        |

# Pictorial Parts List

|   |  |   |   |
|---|--|---|---|
|    |    |    |    |
| LANSSQT240RBLK (1)  | LANSSQT240LBLK (1)   | LANSS672A-BLK (4)   | LANSSQT264BLK(6)  |
|    |    |    |    |
| LANSSQT253RBLK (1)  | LANSSQT253LBLK (1)   | LANSS5126 (2)   | LANSSQT267BLK (2)   |
|  |  |  |  |
| LANSS673-42200-BLK (2)  | LANHH4J6-310 (2)   | LANHH4J6-60 (4)   | LANSSQT268 (2)  |



# Pictorial Parts List

|   |   |  |   |   |
|---|---|--|---|---|
|    |    |    |    |    |
|    |    |    |    |    |
|  |  |  |  |  |
| LANFRCRF (6)  | LANF-FW-M20 (4)   | REDB706 (2)  | REDB712 (4)   | RED706K (20)  |
| LANFHWMW (2)  | LANFFE3P (2)  | REDB306 (2)  | RED0DTT (2)   | LAN690830 (24)  |
| LANF01F0 (4)  | LANFWS50 (4)  | LANSST5149 (1)   | LAN44302 (20)   | LANSS704 (1)  |

# Preparation

1. Park Tractor on level ground and put in park.
2. Turn off the tractors and remove key.

# Installation

*Refer to Figure 1*

1. Remove the tool boxes from the 3/4" Bracket.
2. Loosen outer (2) bolts that hold front weight bracket shown by red arrows.

*Refer to Figure 2*

3. Remove M20 center bolt and the (2) M12 bolts shown by yellow arrows.
4. Flip Bracket upside down and reinstall (2) M12 bolts. Do not reinstall M20 center bolt.

Figure 1



Figure 2



# Installation

*Refer to Figure 3*

5. Reinstall tool box as shown. Repeat this for both sides.

*Refer to Figure 4*

6. Tilt radiator forward to remove (2) bolts shown with yellow arrow: one from each side.

*Refer to Figure 5*

7. Remove one rear bolt from the right side. Breaker bar and socket may assist in the removal. There will still be (2) bolts on the left side and (1) on the front right side to hold cast piece in place.

Figure 3



Figure 4

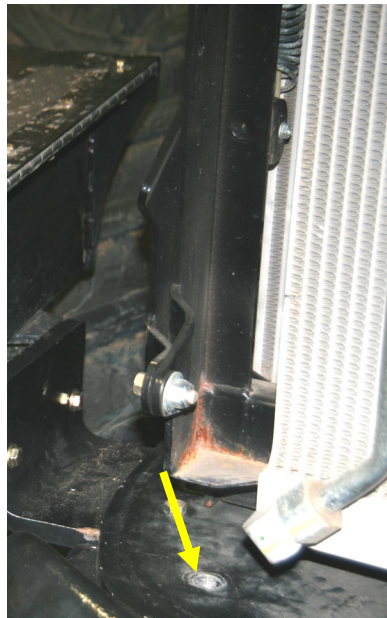


Figure 5





# Installation

*Refer to Figure 6*

8. Install right mounting bracket (LANSSQT240RBLK). Insert bolts (LANFRCRF) from the bottom, with the nut on top by the radiator. There will be 3 bolts installed when done, re-use nuts and washers. **DO NOT** completely tighten bolts.
9. Remove one rear bolt from the left side. There will still be (3) bolts on the right side and (1) on the front left side to hold cast piece in place. Install left mounting bracket (LANSSQT240LBLK). **DO NOT** completely tighten bolts.



**Figure 6**

# Installation

*Refer to Figure 7*

10. Install the 2.5" pins into the arm brackets.
11. Install the right arm (LANSSQT253RBLK) and pin into right mounting bracket (LANSSQT240RBLK).

*Refer to Figure 8*

12. Secure the pin and arm in place by installing a 5/8" x 1.5" bolt (REDB706) and a pin cap (LANSSQT267BLK) into the end of the pin and use a 3/8" bolt and lock nut (REDB306 & RED0DTT) to attach the pin and arm weldment together.

Figure 7

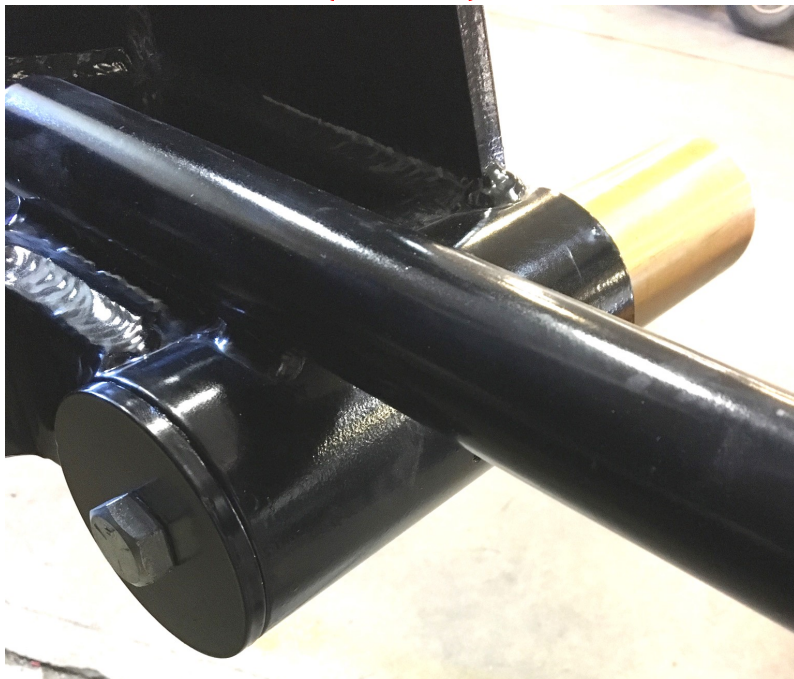


Figure 8





# Installation

*Refer to Figure 9*

13. Install cylinders on to arm and mounting bracket. Base of cylinder goes to mounting bracket and rod end attaches to the arm. Ports on cylinders should be pointed upwards. Install a 1" x 4.5" pin (LANFFE3P) in the bottom and a 1" x 5" pin (LANFHVMW) in the top. Secure them all with 3/16" cotter pin and a 1" SAE flat washer.

*Refer to Figure 10*

14. Install (2) LANHH4J6-60 hoses between front weight and bottom of tractor frame to rear of casting.

*Hardware:*

6801-6-8

ORB 8M x JIC 6M Elbow



Figure 9



Figure 10

# Installation

*Refer to Figure 11*

15. Level arm by turning clevis on end of cylinder.

*Refer to Figure 13*

16. Install shoe (LANSS672-42200-BLK) onto arm.

Hardware Used:

LAN690830

5/8" Serrated Flange Nuts

RED706K

5/8" x 1.5" Carriage Bolts

**Note:** Install arm assemblies (LANSS672A-BLK) first, then mount the shoes (LANSS672-42200-BLK).

*Refer to Figure 14*

17. Visually square shoe with track and tighten M20 Bolts completely.

18. Repeat steps 11 to 16 on other side of tractor.



Figure 11



Figure 13



Figure 14



# Installation

*Refer to Figures 15-20*

19. Thread LANHH4J6-310 hydraulic hose from rear remotes to front of tractor. Connect to 60" hydraulic hoses using Tee's.
20. Connect the adapter, larger tee and pioneer hydraulic fittings found in the LANSST5149 bag together. Attach to the rear end of the 310" hoses and tighten.
21. The tee and female quick coupler allows the Stalk Stompers to be connected in line with a function of an implement.

**Note:** The use of stiff wire may assist you in routing wire through rear housing of tractor. Zip Tie where needed.

Figures 15-20





# Installation

*Refer to Figure 21*

22. Adjust shoes to 1" above the ground by adjusting chain on shoe. Use block under shoe to loosen chain for adjustment

*Refer to Figure 22*

23. Lift Shoe with hydraulics and adjust the stops (LANSSQT264BLK) so shoe will not hit tool boxes.

*Refer to Figure 23*

24. If tractor is equipped with tow cable, use the included pipe and pin (LANSS704).

**Note: If all hydraulic remotes are used, the Stalk Stompers can be Tee'd together with implement raise/lower functions. Recommend replacing elbow with Tee at end of 310" hoses. Install female pioneer couplers in open port on Tee to allow easy implement hooking/unhooking. This hardware is not supplied.**

Figure 21



Figure 22

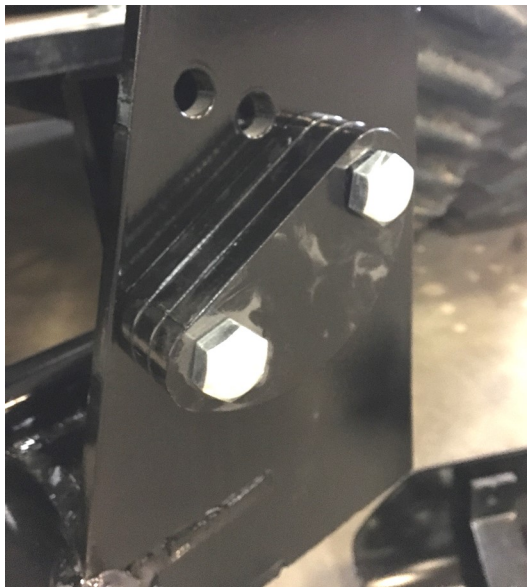


Figure 23



# Stalk Stomper Disclaimer

## *Stalk Stomper Disclaimer*

The most effective use of the Lankota Stalk Stomper® is achieved by adjusting the stomper pad so that when the corn head is at its normal cutting height, the pad of the shoe is 1" above the ground. Over compression of the spring can shorten the life of the stomper spring, increase wear on the poly liner, and may result in undue damage NOT covered by Lankota's Limited Warranty.



**For further technical assistance,  
call Lankota Inc. at:  
1-866-526-5682**