

LANTH300

Installation Instructions

Combine Header Trailer Hitch

LANKOTA[®]

270 West Park Avenue

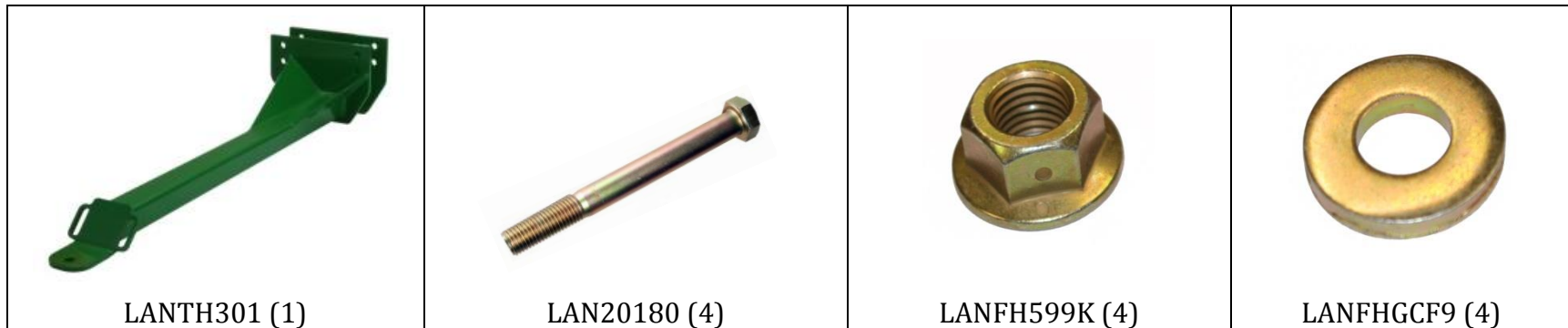
Huron, SD 57350

866-526-5682

Numerical Parts List

Part Numbers	Description	Quantity
LANTH301	Weldment	1
LAN20180	M20 x 190mm Bolt	4
LANFH599K	M20 Flange Head Center Lock Nut	4
LANFHGCF9	M20 Extra Thick Flat Washer	4

Pictorial Parts List



Preparation

1. Park combine on a hard, level surface. Set parking brake and turn off engine.

1. Install Hitch to Axle using Existing Holes

Refer to Figure 1.1

- 1.1 Using a sufficient tonnage jack and blocks if needed, elevate the rear axle of the combine by jacking just to the left of the middle pivot point on the jacking weldment.
- 1.2 Remove the four original axle bolts and nuts show in Figure 1.1.

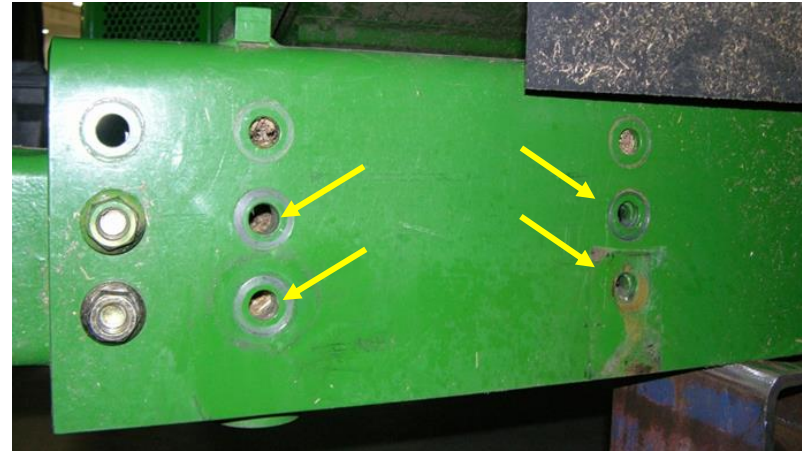


Figure 1.1

Refer to Figure 1.2

- 1.3 Raise hitch (LANH301) into place and align holes in hitch mounting plates with four holes in axle frame.
- 1.4 Install four M20 x 190mm Bolts (LAN20180) as shown in Figure 1.2 with M20 Extra Thick Flat Washer (LANFHGCF9) under each bolt head. Install one M20 Flange Head Center Lock Nut (LANFH599K) per bolt on the other side. Tighten all hardware.
- 1.5 Lower combine to ground. Remove jack and all tools.



Figure 1.2

For further technical information, contact Lankota at 866.526.5682.