

LANTH24599

Installation Instructions

Folding Combine Header Trailer Hitch for Model Year 2020 & Newer Claas® **Lexion** 4WD & Tracked Combines

LANKOTA®

270 West Park Avenue
Huron, SD 57350
866-526-5682

Numerical Parts List

Part Numbers	Description	Qty
LANTH1384	Claas Hitch Base	1
LANTH1385	Claas Hitch Base Backer	1
LANTH1453WBLK	Swivel Tube Weldment - Outer	1
LANTH24599BH	Box of Hardware	1
LAN2138707	Hitch Mount Shim	10
LANFOFSS	M20 x 80mm, Gr. 10.9 Hex Bolt	4
LANFHGCF9	M20 Extra Thick Flat Washer	4
LAN19M7824	M16 x 60mm, Gr. 10.9 Flange Bolt	2
LANFHMKN2	M16 Flange Center Lock Nut	2
LANHH80200	1-1/4" Lockease Hitch Pin	1
LANHW8223	1-1/4" x 7-3/4" Pivot Pin	1
LANFOI8B	1/4" x 2.5" Slotted Spring Pin	2
LANFOEM6	1-3/8" SAE Flat Washer	2

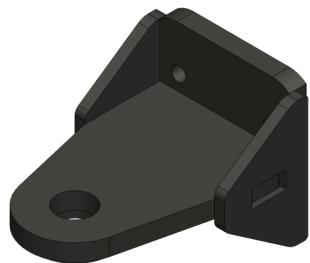
Optional Parts List

Part Numbers	Description	Qty
LANTH1451WBLK	Bolt-on Clevis Hitch Weldment	1
LANF2II7	1/2" x 2" Gr 8 Hex Bolt	4
REDWL55	1/2" Lock Washer	4
LANFWS55	1/2" SAE Washer	4
or		
LAN10040	15 Ton Bolt-on Pintle Hitch Kit	1
LANFC506	1/2" x 1.5" Gr 8 Hex Bolt	4

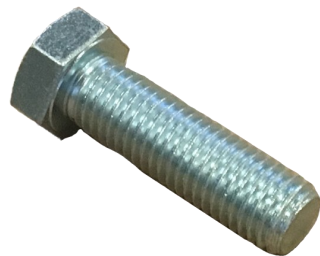
Pictorial Parts List

 <p>LANTH1384 (1)</p>	 <p>LANTH1385(1)</p>	 <p>LANTH1453WBLK (1)</p>	 <p>LAN2138707 (10)</p>	 <p>LANF0FSS (4)</p>
 <p>LANFHGCF9 (4)</p>	 <p>LAN19M7824 (2)</p>	 <p>LANFHMKN2 (2)</p>	 <p>LANHH80200 (1)</p>	 <p>LANHW8223 (1)</p>
 <p>LANF0I8B (2)</p>	 <p>LANF0EM6 (2)</p>			

Optional Pictorial Parts List



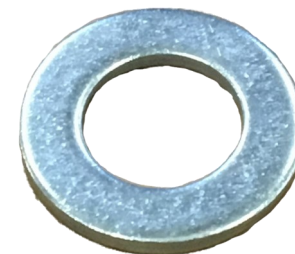
LANTH1451WBLK (1)



LANF2II7 (4)

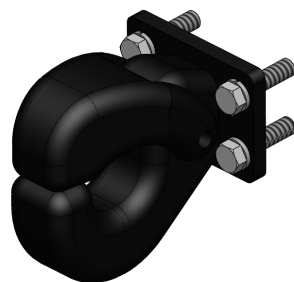


REDWL55 (4)



LANFWS55 (4)

(OR)



LAN10040 (1)



LANF506 (4)

Preparation

1. Park combine on hard, level surface.
2. Steer the rear wheels to the left and raise the straw spreader to provide more space for installing this hitch.
3. Set the parking brake on the combine.
4. Turn off the combine engine and remove the key.

Kit Installation

Refer to Figures 1A & 1B

1. Remove the three factory axle bolts on the back of the axle.



Figure 1A

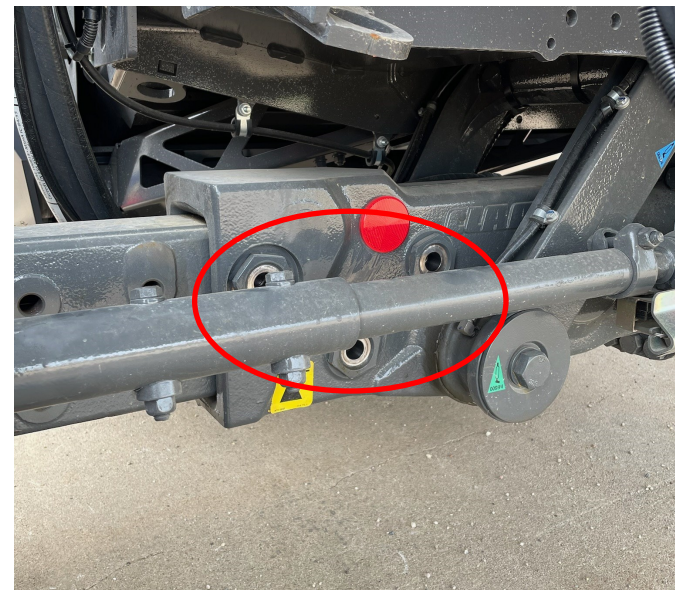


Figure 1B

Kit Installation

Refer to Figures 2 & 3

2. Install the Claas Hitch Base (LANTH1384) using the provided M20 Thick Washers (LANFHGGF9) and M20 X 80, Gr. 10.0 Hex Head Bolts (LANF0FSS).
3. Remove the lower bolt on the front of the rear axle.



Figure 2



Figure 3

Kit Installation

Refer to Figures 4-6

4. Install the Claas Hitch Base Backer (LAN1385) using the provided M20 Thick Washer (LANFHGGF9) and M20 X 80, Gr. 10.0 Hex Head Bolt (LANF0FSS). Leave slightly loose at this time.
5. Determine the proper number of Hitch Mount Shims (LAN2138707) to place between the Hitch Base and Hitch Base Backer to allow a minimum of 1/8" gap between the two parts.
6. Tighten the Hitch Base to the Hitch Base Backer and shims with the provided M16 x 60mm Flange Head Bolts (LAN19M7824) and M16 Flange Center Lock Nuts (LANFHMK2). Tighten all the hardware at this time, including the bolt into the front of the axle.

Figure 4



Figure 5



Figure 6



Kit Installation

Refer to Figures 7—9

7. Install a 1/4" Slotted Spring Pin (LANF018B) into one end of the Pivot Pin (LANHW8223) and pin the Hitch Tube (LANTH1453WBLK) into the Hitch Base. Be sure to put the 1.375" Flat Washer (LANF0EM6) under the tube as it is pinned in place so it swivels more freely.
8. Install the other 1/4" Slotted Spring Pin into the Pivot Pin to secure it in place.

Figure 7



Figure 8

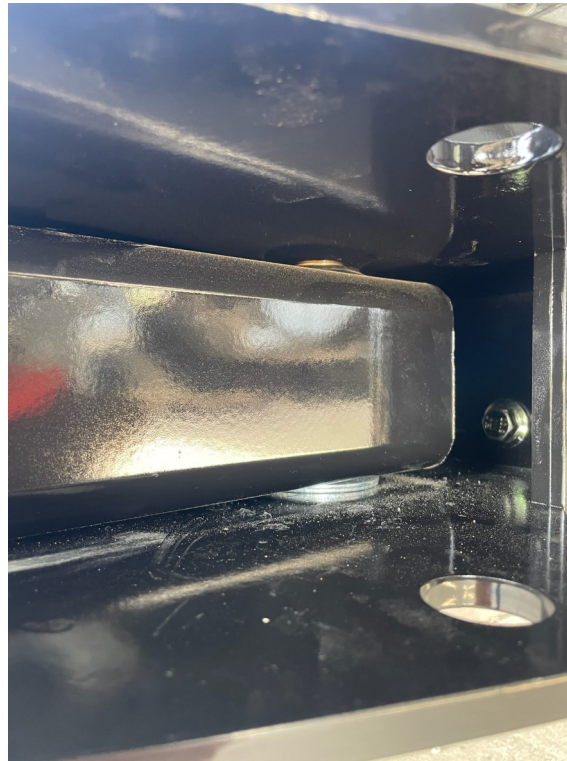


Figure 9



Kit Installation

Refer to Figures 10 & 11

9. Install the Lockease Hitch Pin (LANHH80200) through the mount to secure the tube in either the pull or folded position.

Figure 10



Figure 11



Kit Installation

Note: If the tube weldment does not ship with the appropriate hitch bolted on, follow these steps.

Refer to Figure 12

10. Ensure the threaded holes are clear of any debris by blowing them out with compressed air.

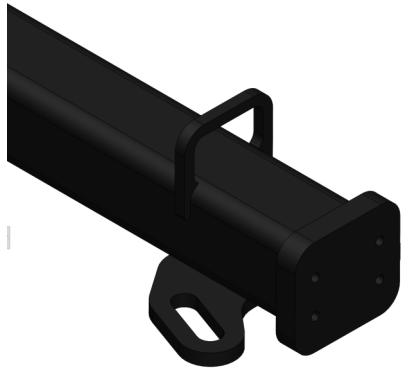
Refer to Figure 13 (For Clevis Hitch)

11. Bolt on the clevis hitch weldment (LANTH1451WBLK) with the provided 1/2" x 2" bolts, lock washers and flat washers.

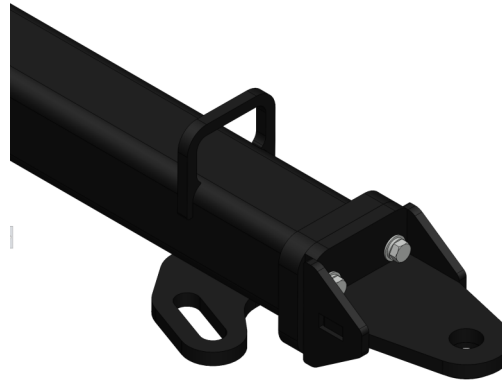
Refer to Figure 14 (For Pintle Hitch)

12. Bolt on the pintle hitch with the hardware included in the kit and the 1/2" x 1.5" Bolts.

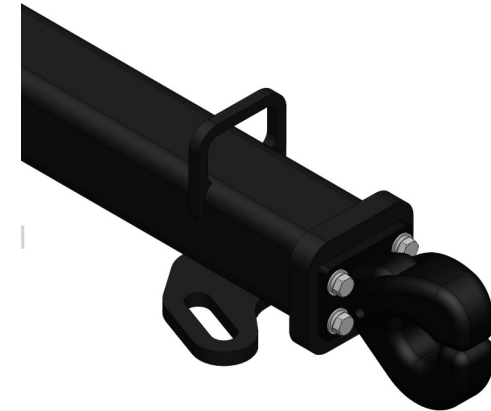
(Figure 12)



(Figure 13)



(Figure 14)



For further technical assistance,

Call Lankota Inc. at:

1-866-526-5682