

# LANTC24598

## Installation Instructions

Lankota Shield Kit for 8RX Tractors with Factory Fender Tanks and LANTC17056 Installed

**\*LANTC17056 is required when installing this kit\***

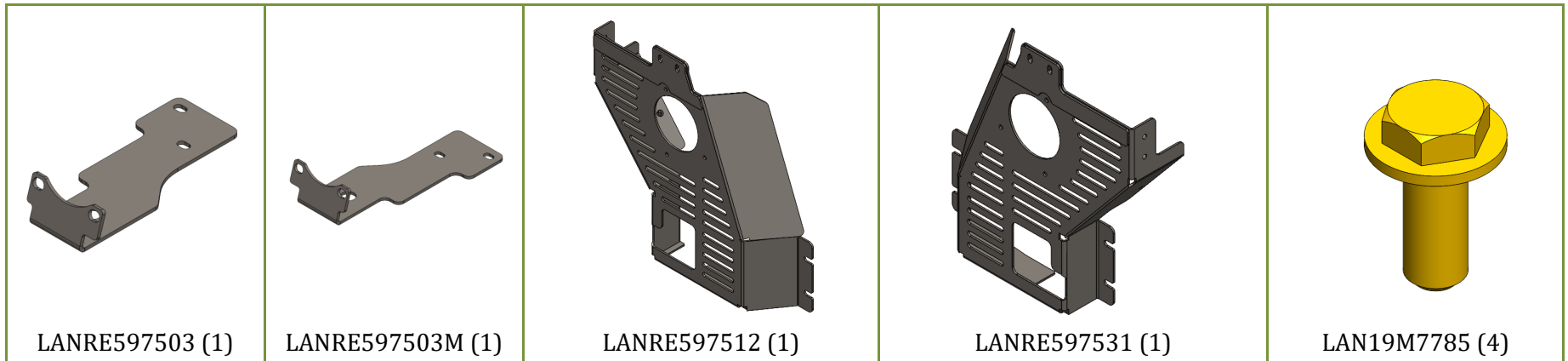
# LANKOTA®

270 West Park Avenue  
Huron, SD 57350  
866-526-5682

## Numerical Parts List

Part Numbers	Description	Qty
LANRE597503	Modified Valve Bracket—Passenger Side	1
LANRE597503M	Modified Valve Bracket—Driver Side	1
LANRE597512	Modified Valve Shield—Driver Side	1
LANRE597531	Modified Valve Shield—Passenger Side	1
LAN19M7785	M10-1.5 x 25mm, Grade 10.9 Flange Head Bolt	4

## Pictorial Parts List



# Preparation

1. Unhook any implement from the tractor.
2. Park the tractor on a flat, hard surface.
3. Set the parking brake on the tractor.
4. Turn off the engine and remove the key.

# Kit Installation

## Refer to Figure 1

1. Remove the factory shields from the bottom of the tractor, retaining all hardware for later use.

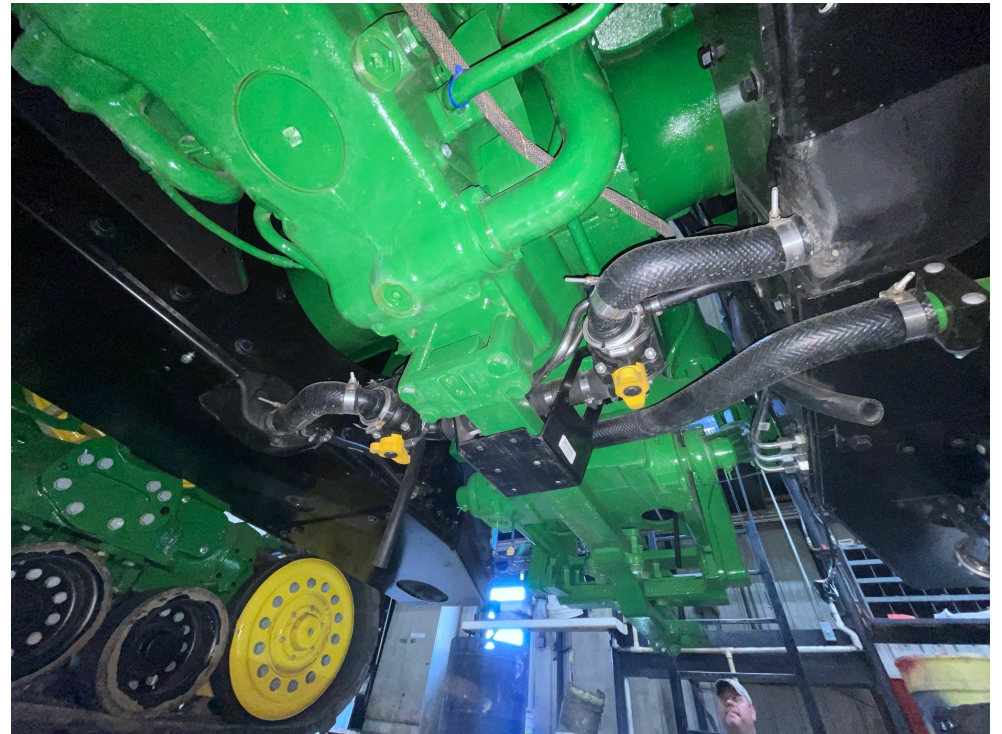


Figure 1

# Kit Installation (8RT Only)

**IMPORTANT:** For the following steps, make sure there is no liquid in the tanks!

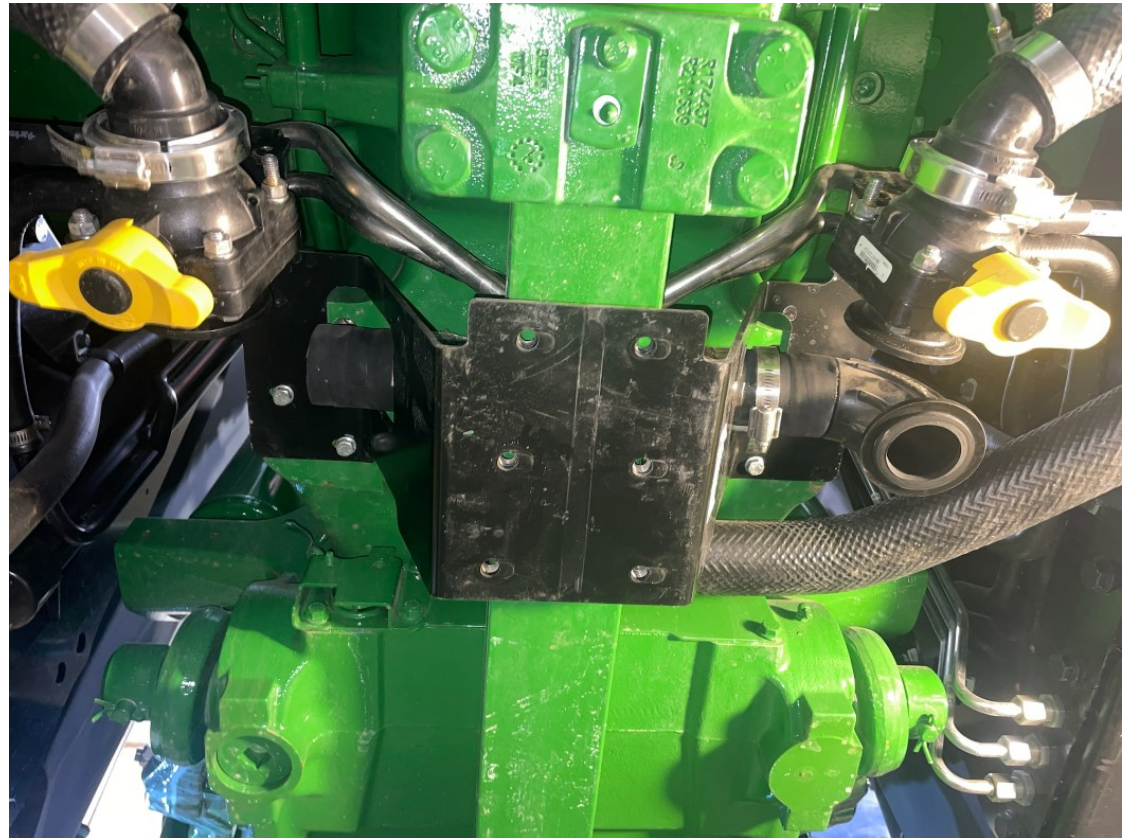
Refer to Figures 2

2. Remove the valve assembly, and any hose/hard line clamps from the center shield mount and retain all hardware.
3. The elbows behind the shut off valves need to be removed from the factory hose connecting the two valves. Use a nut driver to loosen the hose clamps on both sides. One side can be removed from just the valve, while the other side needs to be removed from the valve and pulled loose from the hose—as shown in Figure 3.

Figure 2



Figure 3



# Kit Installation

## Refer to Figure 4

4. Remove the hardware holding the middle shield mount to the frame of the tractor, and remove the mount. Retain the hardware for later use.

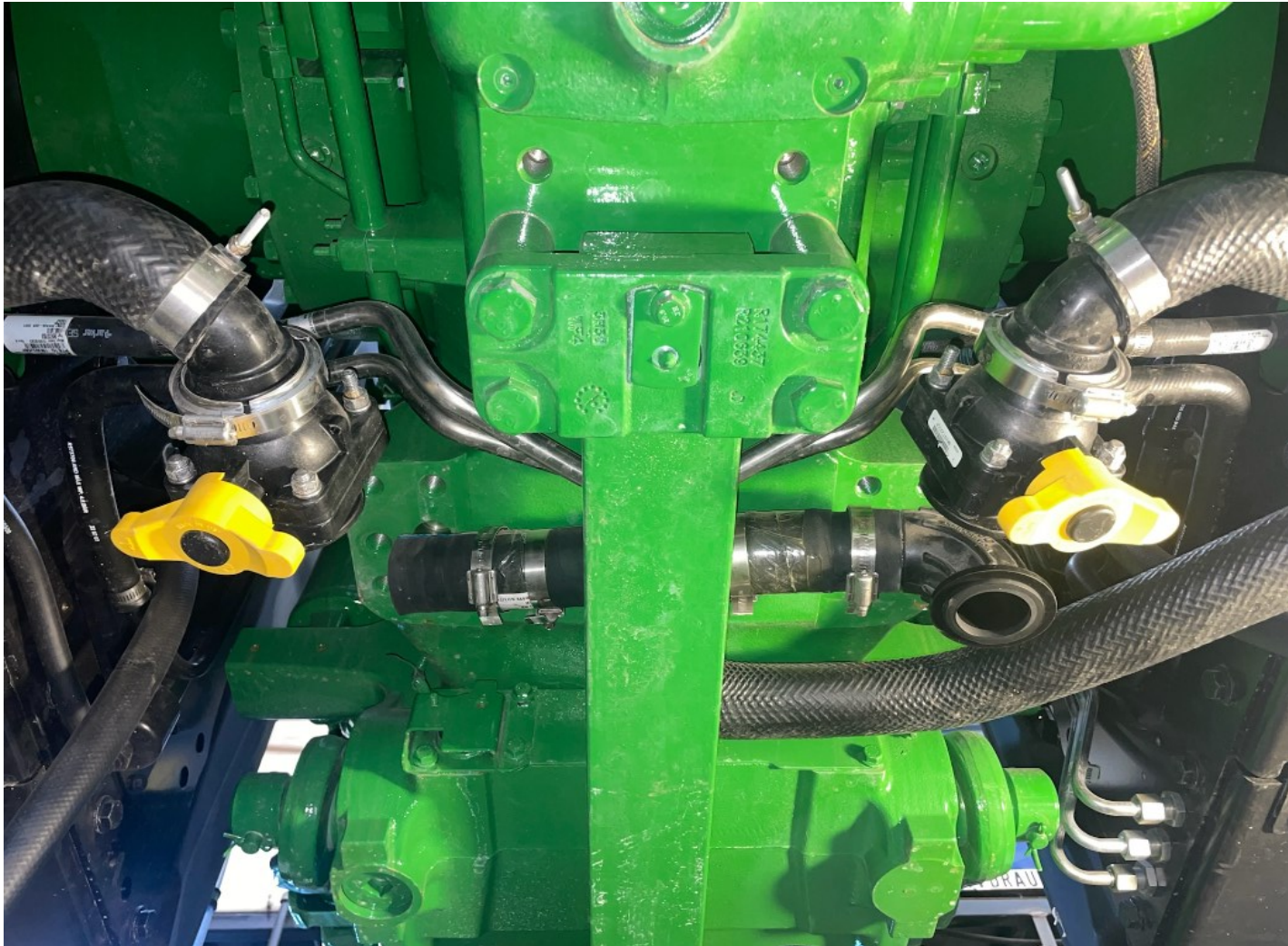


Figure 4

# Kit Installation

## Refer to Figures 5 & 6

5. Mount the Modified Valve Brackets (LANRE597503 & LANRE597503M) to the tractor using factory hardware.
6. Attach the hard line clamps to the Modified Valve Brackets and attach to the valve assembly on both sides of the tractor with factory hardware.



Figure 5



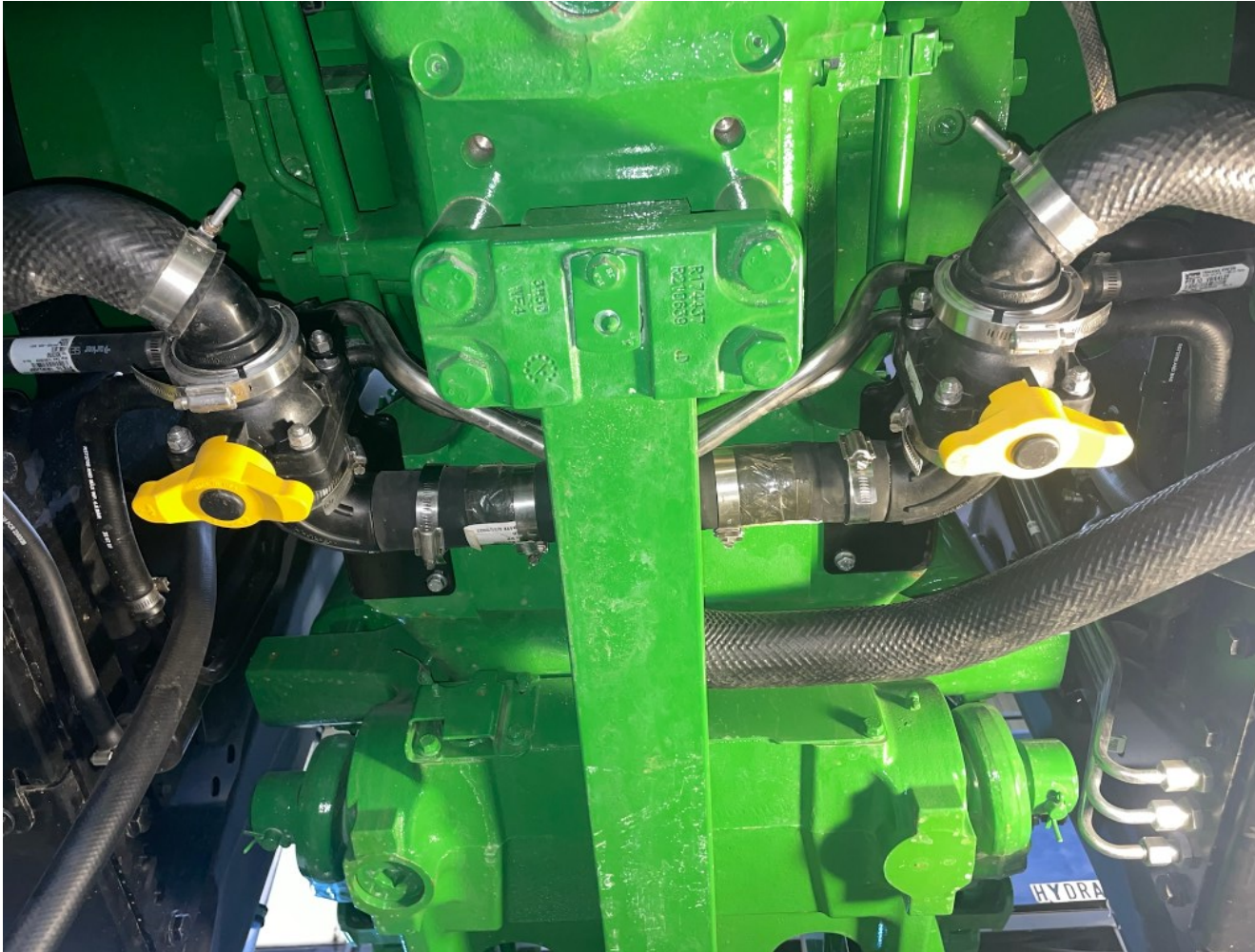
Figure 6

# Kit Installation

## Refer to Figure 7

7. Re-attach the elbows to the hose using existing hose clamps. Make sure a good seal is made to prevent leaking.

Figure 7



# Kit Installation

Refer to Figures 8-10

8. Install the LAN8RTC019 and turn buckles according to the LANTC17056 instructions.

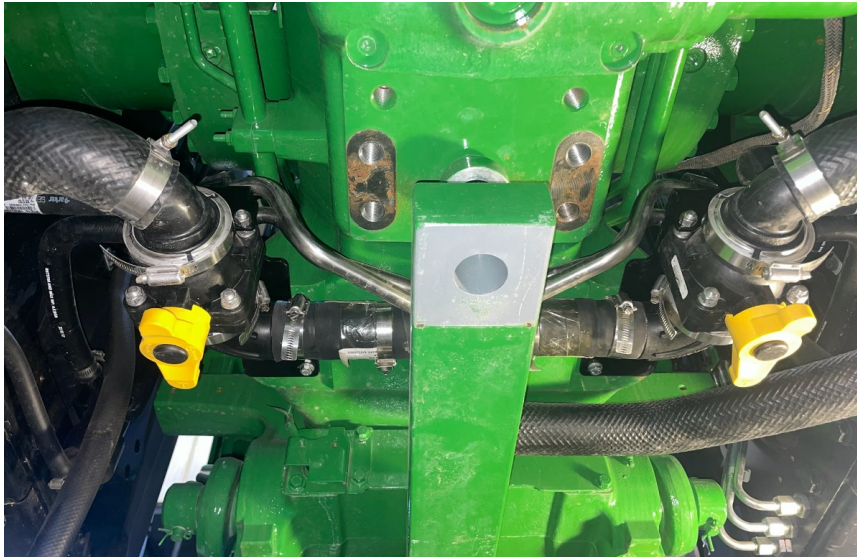


Figure 8



Figure 9



Figure 10

PLACE JAM NUT HERE



# Kit Installation

## Refer to Figure 11

9. Install the LANRE597512 and LANRE597531 using the provided M10X25mm Flange Head Bolts (LAN19M7785) to attach to the LAN8RTC019. Use the factory hardware to attach to the frame of the tractor.

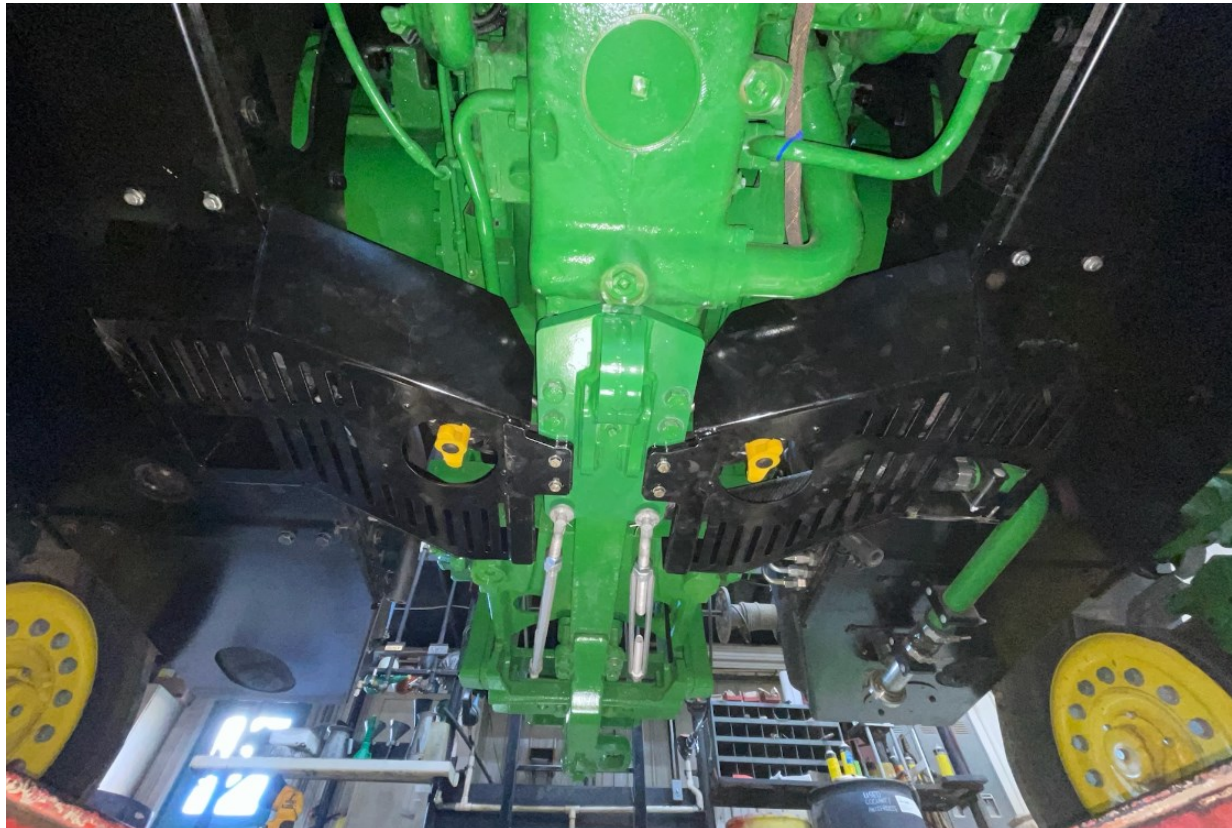


Figure 9

**For further technical assistance, Call Lankota Inc. at:**

**1-866-526-5682**