

LANTC22484

Installation Instructions

Lankota Tow Cable Kit for JD® X9 Series Combines

LANKOTA®

270 West Park Avenue
Huron, SD 57350
866-526-5682

Numerical Parts List

Part Numbers	Description	Qty
LANTC160TR	Tow Cable Assembly	1
LANTC162	Cable Shackle Bushing	4
LANTC178	1/2" Rear Cable Support Chain	1
LANTC186	Cable Stow Latch	1
LANTC208	1 1/4" Shackle	2
LANTC221	Cross Member	2
LANTC222	Mounting Plate	2
LANTC223	Splice Plate	2
LANTC224	Cable Tensioning Clevis	2
LANTC226	Cable Stow Hook	1
LANSS704	Twist Lock Pin	1
LAN26000	5/8" Flat Washer	9
LAN26B00	5/8" x 2" Gr. 5 Hex Bolt	5
LANF-FW-M20	M20 Flat Washer	6
LANFB824	3/4" x 6" Gr. 5 Hex Bolt	2
LANF018L	3/4" x 3" Gr. 8 Hex Bolt	8
RED0DTT	3/8" Gr. 5 Top Lock Nut	2
REDB308	3/8" x 2" Gr. 5 Hex Bolt	2
REDB820	3/4" x 5" Gr. 5 Hex Bolt	4
REDKRJF	5/8" Gr. 5 Top Lock Nut	5
REDKRJG	3/4" Gr. 5 Top Lock Nut	14
REDWU58	3/4" Flat Washer	16
LANFM61J	M24 x 110 CL 10.9 Hex Bolt	6
LANFOFSS	M20 x 80 CL 10.9 Hex Bolt	6

Pictorial Parts List

					
LANTC160TR (1)	LANTC162 (4)	LANTC178 (1)	LANTC186 (1)	LANTC208 (2)	LANTC221 (2)
					
LANTC222 (2)	LANTC223 (2)	LANTC224 (2)	LANTC226 (1)	LANSS704 (1)	LAN26000 (9)
					
LAN26B00 (5)	LANF-FW-M20 (6)	LANFB824 (2)	LANF018L (8)	RED0DTT (2)	REDB308 (2)
					
REDB820 (4)	REDKRJF (5)	REDKRJG (14)	REDWU58 (16)	LANFM61J (6)	LANF0FSS (6)

Preparation

1. Remove head from combine
2. Set the parking brake on the combine.
3. Turn off the combine engine and remove the key.

Kit Installation

Refer to Figures 1 & 2

1. Starting at the front axle of the combine, loosen and pull the axle tie rod back as shown. **Note: The axle tie rod can be pulled all the way out through the tracks. If equipped with tires, the nuts will need removed from each side.**
2. Loosen and remove the three bolts shown in Figure 2.



Figure 1



Figure 2

Kit Installation

Refer to Figures 3 - 5

3. Attach the mounting plate (LANTC222) with the M24 X 110 bolts (LANFM61J), washers and nuts. **Re-use the original washers and nuts.**
4. Repeat Steps 1 & 2 on the opposite side of the combine.
5. Position the cable assembly (LANTC160TR) under the combine with the two longer legs near the previously installed cable mounts (LANTC161 & LANTC161M) and the shorter leg at the rear of the combine.

Figure 3



Figure 4



Figure 5

Kit Installation

Refer to Figures 6 - 8

6. Install shackle (LANTC208) on the cable ends of both the long legs of the cable assembly.
7. Bolt the cross member tubes (LANTC221) to the mounting plates (LANTC222) with the open hole on the horizontal plate pointing toward the rear of the combine. Use four 3/4" x 3" Gr. 8 bolts (LANF018L), four 3/4" flat washers (REDWU58), and four 3/4" top lock nuts (REDKRJG). **Do not tighten completely at this time.** Repeat on the opposite side of the combine.

Figure 6



Figure 7



Figure 8

Kit Installation

Refer to Figures 9 - 10

8. Where the ends of the two cross member tubes (LANTC221) meet under the center of the front axle, loosely bolt the splice plates (LANTC224) on the front and back side of the cross member tubes with four 3/4" x 5" Gr. 5 bolts (REDB820), four 3/4" flat washers (REDWU58) and four 3/4" top lock nuts (REDKRJG).
9. Tighten the bolts at the end of the cross members tubes where they meet the mounting plates, then tighten the bolts at the splice plates.



Figure 9



Figure 10

Kit Installation

Refer to Figures 11 - 13

10. Attach the cable ends to the cross members (LANTC221) with the shackles (LANTC208), 3/4" x 6" Gr. 5 bolts (LANFB824), washers (REDWU58), and top lock nuts (REDKRJG). **Note: The original shackle pin is not used.**

NOTE: Do not over-tighten. The shackle needs to be able to rotate freely. If the shackle cannot be rotated by hand, loosen the nut slightly until it can.

11. Place a stool under the D-ring in the cable assembly or pull the slack out of the assembly by pulling on the short cable eye with a forklift, atv, etc. This will help for tensioning the cable assembly later.

Figure 11

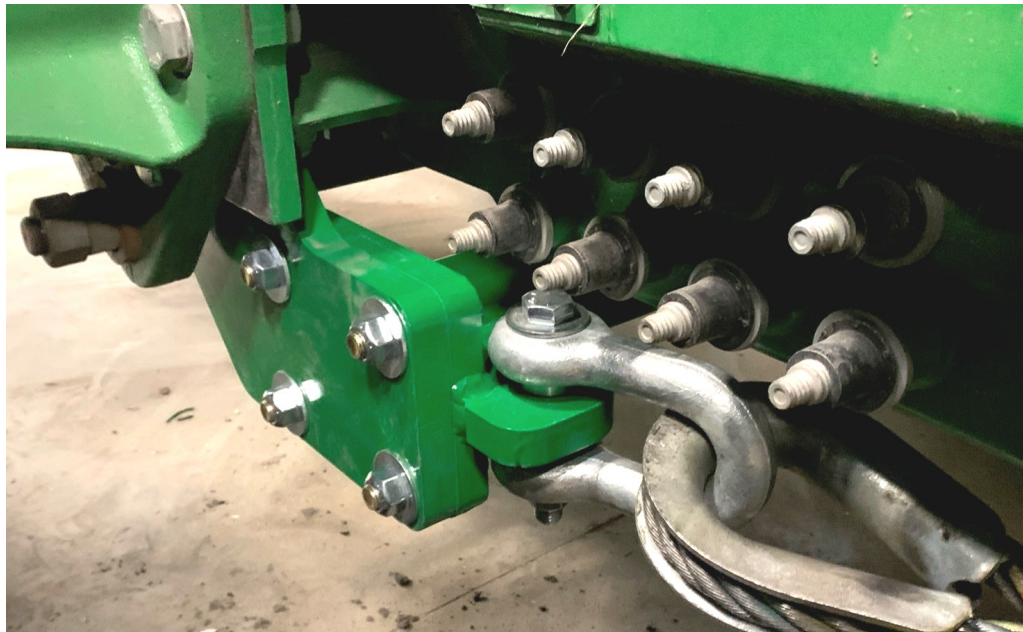


Figure 12

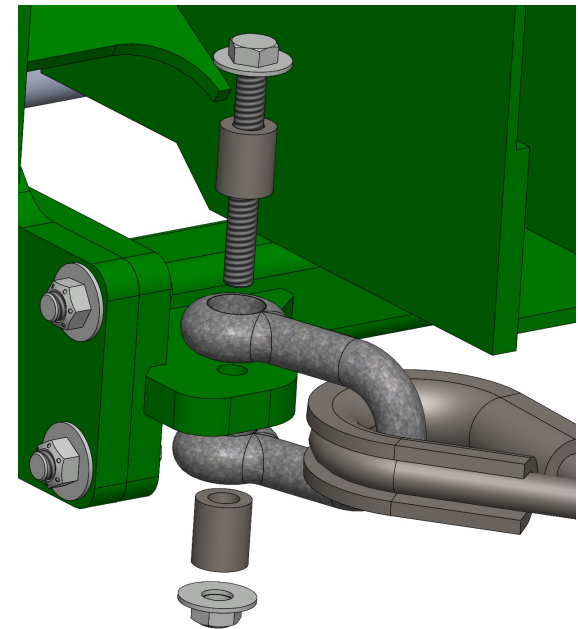


Figure 13

Kit Installation

Refer to Figures 14 - 15

12. Move to the rear axle of the combine and remove the lower bolts on the hydraulic steering cylinder.
13. Attach the cable tensioning clevis (LANTC224) to the lower cylinder ears with three M20 x 80 bolts (LANF0FSS) and three M20 flat washers (LANF-FW-M20).
14. Attach the end of the 1/2" chain (LANTC178) to the cable tensioning clevis with a 3/8" x 2" Gr. 5 bolt (REDB308) and 3/8" top lock nut (REDODTT).

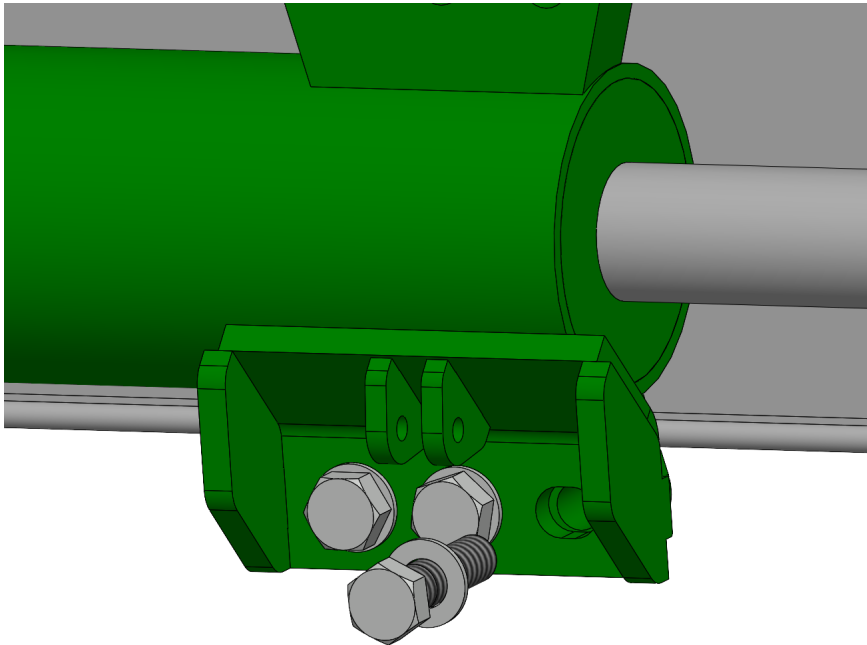


Figure 14

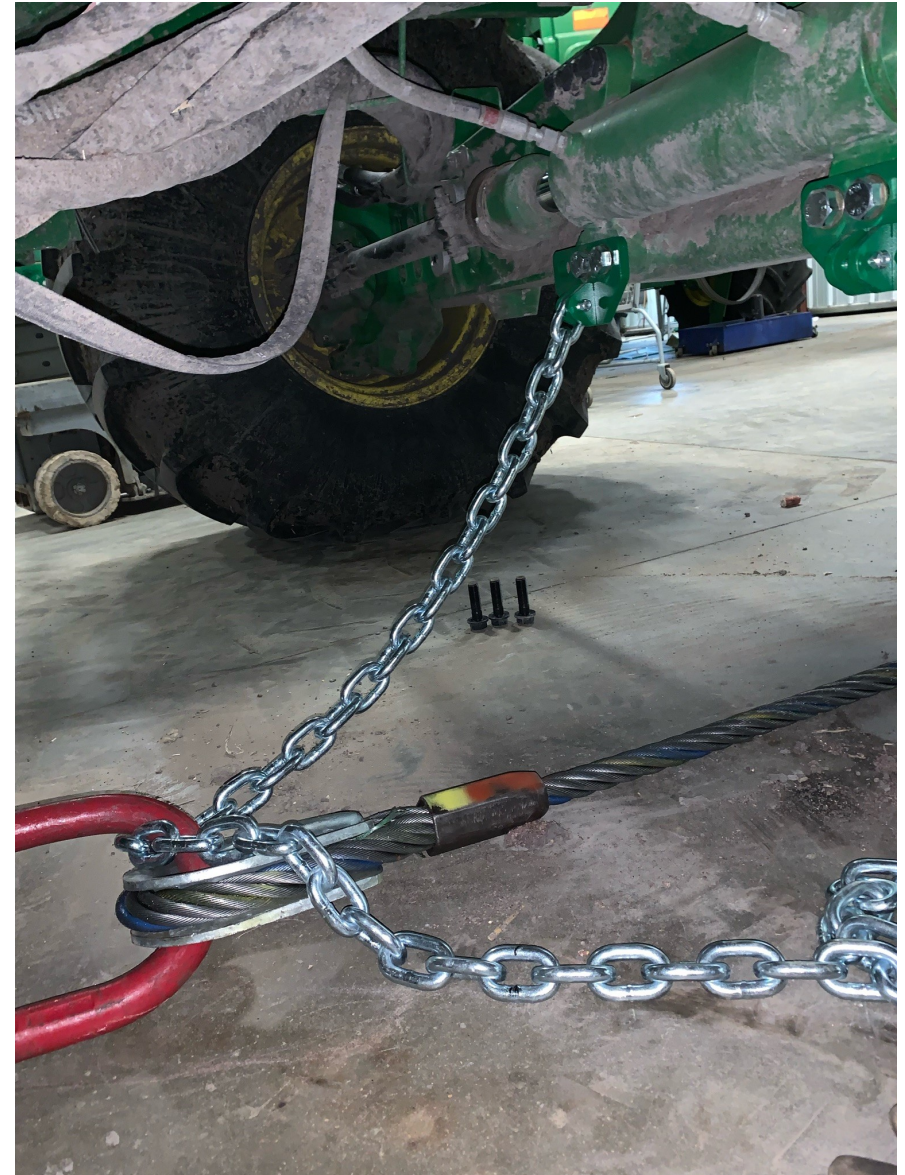


Figure 15

Kit Installation

Refer to Figures 16 - 17

15. Feed the 1/2" chain (LANTC178) through the D-ring in the cable assembly (LANTC160TR).
16. With the cable assembly drawn tight or resting on a stand, pull the loose end of the chain tight and attach the appropriate link to the open cable tensioning clevis (LANTC224). Cut off any excess chain length if necessary.
17. Attach the cable stow hook (LANTC226) to the rear hitch mounting surface behind the rear axle of the combine using four 5/8" x 2" Gr. 5 bolts (LAN26B00) eight 5/8" washers (LAN26000), and four 5/8" top lock nuts (REDKRJF). If a hitch is equipped, remove the hitch and bolt the stow hook between the hitch and the mounting surface.



Figure 16

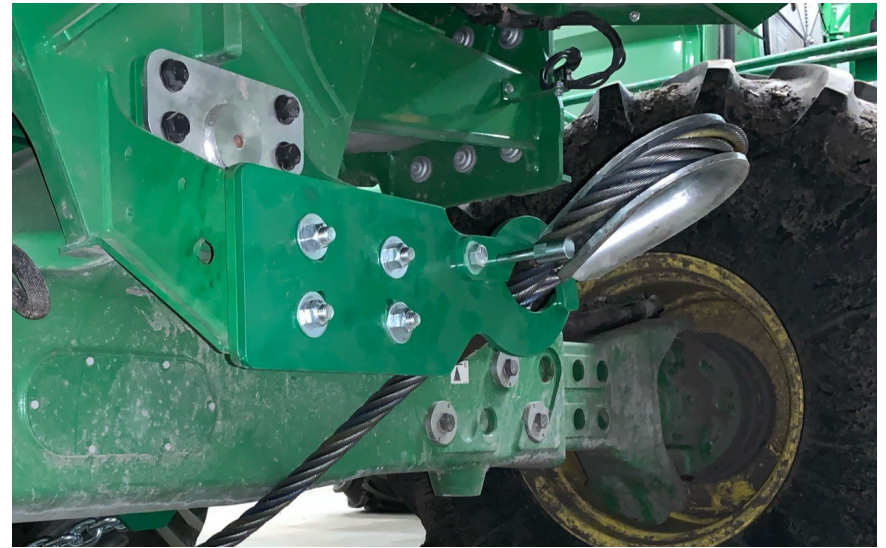


Figure 17

Kit Installation

Refer to Figures 18 - 19

18. Attach the cable stow latch (LANTC186) to the stow hook (LANTC226) using a 5/8" x 2" Gr. 5 bolt (LAN26B00), 5/8" top lock nut (REDKRJF), and 5/8" flat washer (LAN26000). **Do not overtighten or the latch will not rotate.**
19. Place tow cable into the stow hook and latch behind the cable eye.

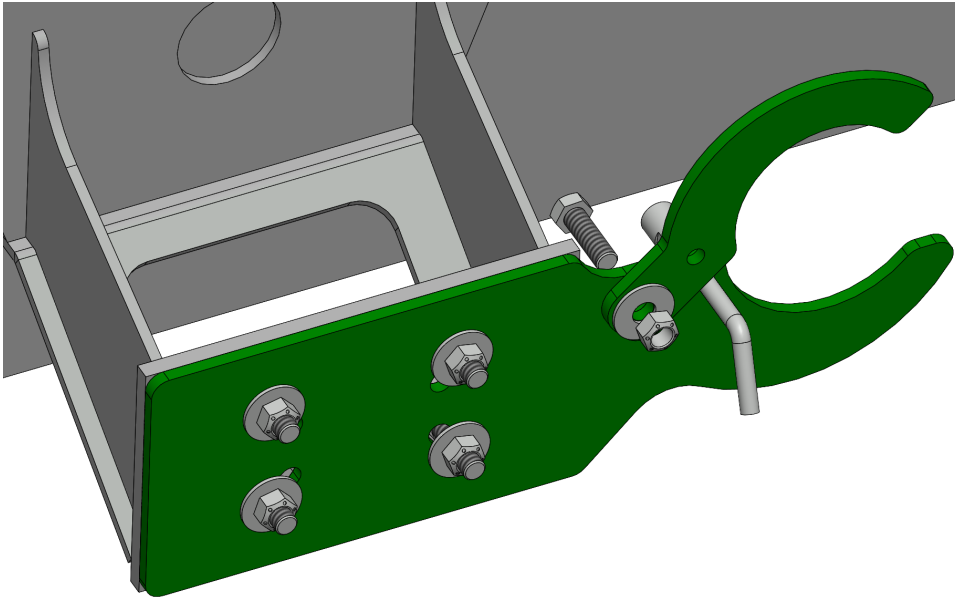


Figure 18



Figure 19



For further technical assistance,

Call Lankota Inc. at:

1-866-526-5682

