

LANTB44958

Installation Instructions

Lankota Header/Universal Toolbox

Drago GT

LANKOTA®

270 West Park Avenue


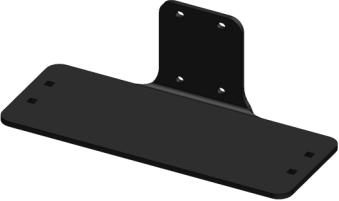
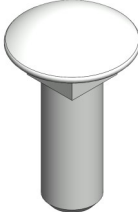

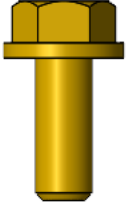

Huron, SD 57350

866-526-5682

Numerical Parts List

Part Numbers	Description	Qty
LANTBJD100-ABLK	Toolbox Assembly	1
LANDRTB001	Drago GT Toolbox Mount	1
LAN506K	Carriage Bolt 1/2"-13 x 1.5"	4
LAN1137030	NYLOC Nut 1/2"-13, Gr.5	4
LANFG36R	Flange Bolt M12-1.75 x 30, Gr.8.8	4
LAN22000	Flat Washer 1/2"	4

Pictorial Parts List

 <p>LANTBJD100-ABLK (1)</p>	 <p>LANDRTB001 (1)</p>	 <p>LAN506K (4)</p>	 <p>LAN1137030 (4)</p>
	 <p>LANFG36R (4)</p>	 <p>LAN22000 (4)</p>	

Kit Installation

Refer to Figures 1 & 2

1. Install Drago GT Toolbox Mount (LANDRTB001) to header utilizing threaded holes in header frame. Use (4) flange bolts M12-1.75 x 30 (LANFG36R), center and tighten hardware.
2. Once Drago GT Toolbox Mount is in place and bolts are tight, set Toolbox Assembly (LANTBJD100-ABLK) on flat of Toolbox Mount (LANDRTB001). Install (4) 1/2" x 1.5" carriage bolts (LAN506K), (4) 1/2" flat washers (LAN22000), & (4) 1/2" NYLOC nuts (LAN1137030) and tighten hardware.

Figure 1

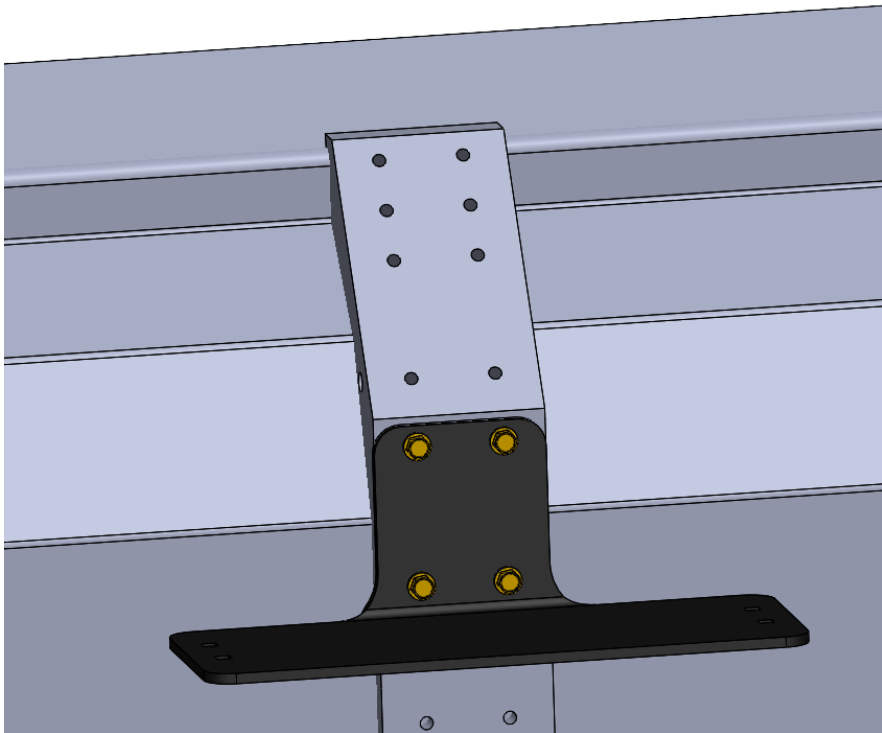


Figure 2



Kit Installation



For further technical assistance,

Call Lankota Inc. at:

1-866-526-5682