

# **LANSSGH830R2 & LANSSGH1230R2**

## **Installation Instructions**

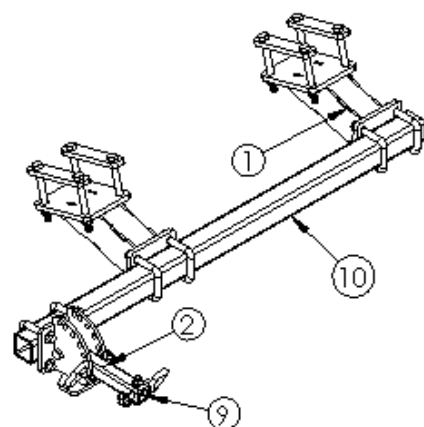
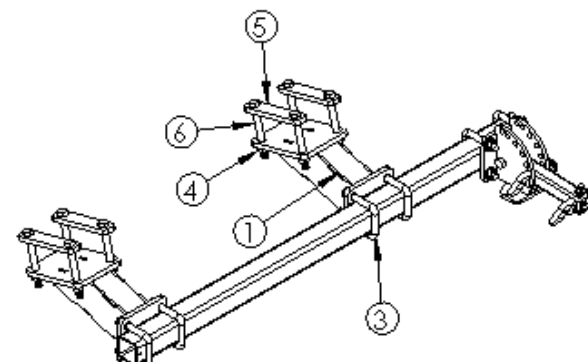
**Lankota GENERATION II Stalk Stomper® Kit for Geringhoff Corn Heads**

**2-Row Coverage**

# **LANKOTA®**

**270 West Park Avenue  
Huron, SD 57350  
866-526-5682**

ITEM NO.	PART NUMBER	DESCRIPTION	QTY.
1	LANSSGHT2	GERINGHOFF TOOLBAR MOUNT	4
2	LANSS659	Rear Mount Flip Up	2
3	LAN600UBOLT	5/8" x 3.75" L x 2.625" W U-BOLT	12
4	LAN690830	5/8"-11 Flange Nut	40
5	LANSSGHP1	GERINGHOFF CLAMP PLATE	8
6	LAN26E32	5/8"-11 X 5.50" HEX HEAD CAP SCREW	16
7	LANFNHVK	FLNG BOLT - 1/2-13 X 2.5, GR. 5	2
8	LAN3722	FLNG NUT - .500-13, GR. 5	2
9	LANSS604	HITCH PIN W/ LYNCH PIN	2
10	LANSSB52BLK	52" STALK STOMPER MOUNT TUBE	2



<b>LANKOTA GROUP</b>		
TITLE: <b>GERINGHOFF STALK STOMPER KIT - TWO 30" ROW COVERAGE</b>		
SIZE <b>A</b>	DWG. NO. <b>LANSSGH830R2</b>	REV
SCALE: 1:16	WEIGHT: 163.31	SHEET 2 OF 2

5

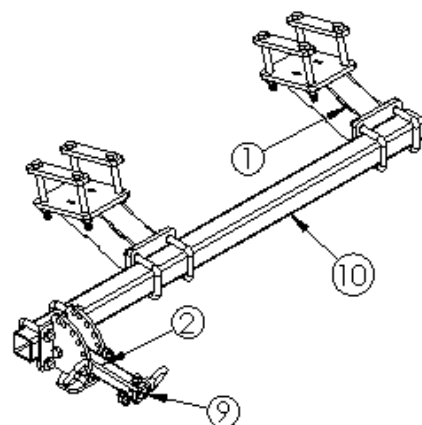
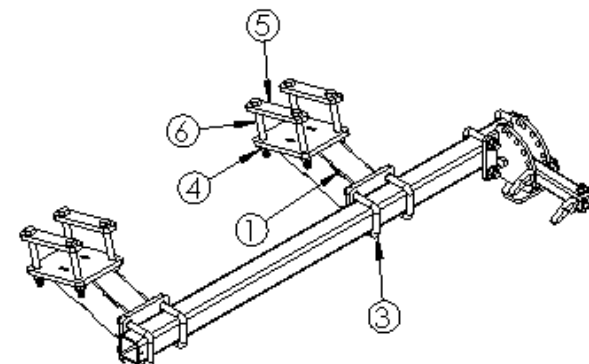
4

3

2

1

ITEM NO.	PART NUMBER	DESCRIPTION	QTY.
1	LANSSGHT2	GERINGHOFF TOOLBAR MOUNT	4
2	LANSS659	Rear Mount Flip Up	2
3	LAN600UBOLT	5/8" x 3.75"L x 2.625"W U-BOLT	12
4	LAN690830	5/8"-11 Flange Nut	40
5	LANSSGHP1	GERINGHOFF CLAMP PLATE	8
6	LAN26E32	5/8"-11 X 5.50" HEX HEAD CAP SCREW	16
7	LANFNHVK	FLNG BOLT - 1/2-13 X 2.5, GR. 5	2
8	LAN3722	FLNG NUT - .500-13, GR. 5	2
9	LANSS604	HITCH PIN W/ LYNCH PIN	2
10	LANSSB52BLK	52" STALK STOMPER MOUNT TUBE	2



<b>LANKOTA GROUP</b>		
TITLE: GERINGHOFF STALK STOMPER KIT - TWO 30" ROW COVERAGE		
SIZE	DWG. NO.	REV
<b>A</b>	<b>LANSSGH1230R2</b>	
SCALE: 1:16	WEIGHT: 163.31	SHEET 2 OF 2

# Numerical Parts List

Part Numbers	Description	Qty
LANSSB52BLK	52" Stalk Stomper® Tool Bar	2
LANSSGHT2	Gerringhoff Tool Bar mount	4
LANSSGHP1	Gerringhoff Clamp Plate	8
LANSS659	Rear Mount Flip Up	2
<b>LANSSGH</b>	<b>Box Containing Bags of Hardware</b>	<b>1</b>
<b>LANSS668BH</b>	<b>Bag of Hardware</b>	<b>2</b>
LAN600UBOLT	U-bolt 5/8" x 2.265" ID x 3.75" Length	2
LAN690830	5/8"-11 Serrated Flange Nut	4
LANFNXC1	1/2"-13 Flanged Nyloc Nut	1
LANFNHVK	1/2"-13 x 2.5" Flanged Cap Screw	1
<b>LANSSGH1230R12BH</b>	<b>LANSSGH1230R12 Bag of Hardware</b>	<b>1</b>
LAN600UBOLT	U-bolt 5/8" x 2.265" ID x 3.75" Length	8
LAN690830	5/8" Serrated Flange Nut	32
LAN26E32	5/8"-11 x 5.50" Hex Head Cap Screw	16

## Pictorial Parts List

				
LANSSB52BLK(2)	LANSSGHT2 (4)	LANSSGHP1 (8)	LANSS659 (2)	LAN26E32 (16)
				
LAN600UBOLT (12)	LAN690830 (40)	LANFNHVK (2)	LANFNXC1 (2)	

## Preparation

1. Attach desired header to the combine. Lock the head to the combine.
2. Raise the head off the ground and lower the safety stop on the feeder house cylinder.
3. Set the parking brake on the combine.
4. Turn off the combine engine and remove the key.

# 1. Installation

Refer to Figures 1 & 2

1. Place the clamp plates (LANSSGHP1) on top of the header frame tube located under the back of the head and bolt the tool bar mount (LANSSGHT2) to the tube. They can be placed halfway between rows as shown in Figure 2, but make sure to leave room for the deck plate parts to move properly. Do the same on the opposite side of the head.

Hardware:

LAN26E32	5/8"-11 x 5.50" Hex Head Cap Screw
LAN690830	5/8" Serrated Flange Nut

Figure 1



Figure 2



# 1. Installation

Refer to Figures 3 & 4

2. Place the clamp plates (LANSSGHP1) on top of the header frame tube located under the back of the head and bolt the tool bar mount (LANSSGHT2) to the tube. They can be placed halfway between rows as shown in Figure 2, but make sure to leave room for the deck plate parts to move properly. Do the same on the opposite side of the head.

Hardware:

LAN600UBOLT

U-Bolt 5/8" x 2.625" ID x 3.75" L

LAN690830

5/8" Serrated Flange Nut

Figure 3



Figure 4





# 1. Installation

Refer to Figures 5 & 6

3. Install the LANSS659 mounts to cover the row that is in line with the back tire of the combine. Do this on both sides of the head.
4. Tighten all hardware used during installation if not already done so.

Hardware:

LAN600UBOLT	U-Bolt 5/8" x 2.625" ID x 3.75" L
LAN690830	5/8" Serrated Flange Nut

Figure 5

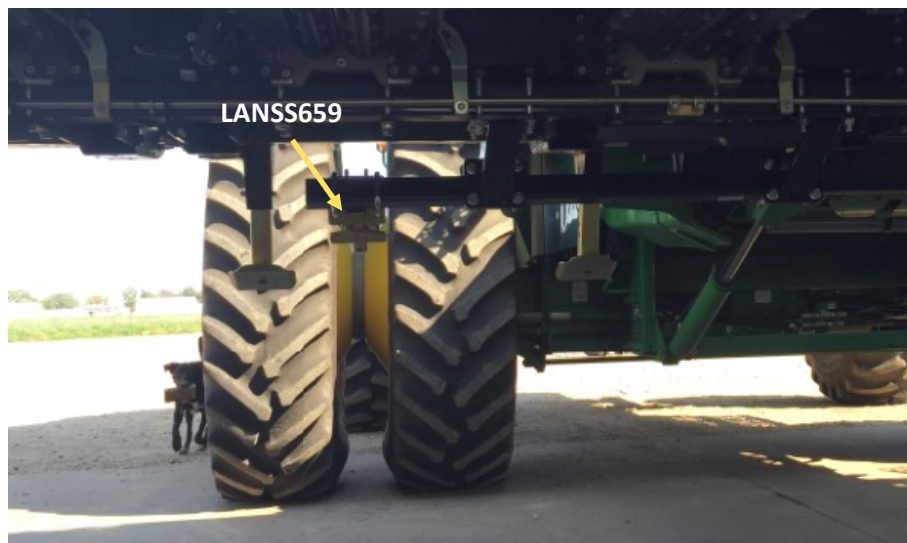


Figure 6

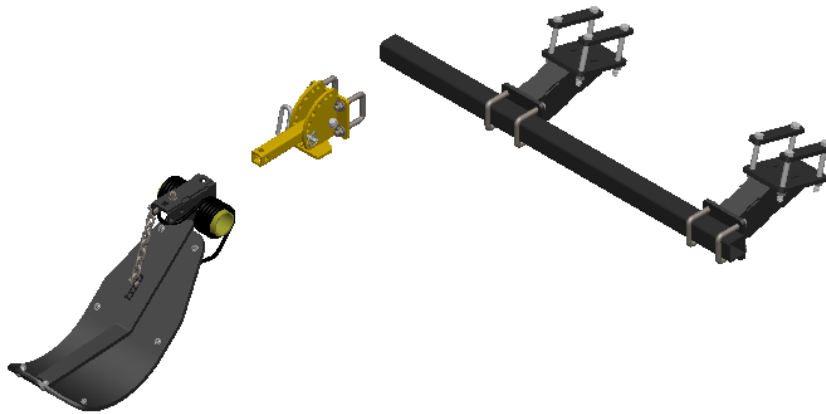




# Stalk Stomper Disclaimer

## *Stalk Stomper Disclaimer*

The most effective use of the Lankota Stalk Stomper® is achieved by adjusting the stomper pad so that when the corn head is at its normal cutting height, the pad of the shoe is 1" above the ground. Over compression of the spring can shorten the life of the stomper spring, increase wear on the poly liner, and may result in undue damage NOT covered by Lankota's Limited Warranty.



For further technical assistance,

Call Lankota Inc. at:

1-866-526-5682

