

LANSSCRPFK

Installation Instructions

John Deere 600, 700, & C Series 30" Folding Corn Head Hood Protector

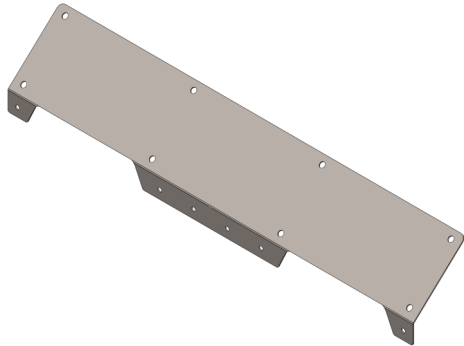
LANKOTA®

**270 West Park Avenue
Huron, SD 57350
866-526-5682**

Numerical Parts List

Part Numbers	Description	Qty
LAN970A	Stainless Steel Folding Corn Row Plate	2
LANSSCRPBH	Bag of Hardware	2
LAN030114048	3/4" Philips Pan Head Screw	24
LAN030112032	1/2" Philips Pan Head Screw	12

Pictorial Parts List



LAN970A (2)



LAN030114048 (24)



LAN030112032 (12)

Kit Installation

Refer to Figure 1

1. Either completely remove the hood and snout assembly from head or raise hood and snout assembly to maintenance/storage position.
2. Fit stainless steel corn row plate (LAN970A) into position as shown in Figure 1.
3. Install the six smaller side screws (LAN030112032) into the short side of the plate.

Note: A battery powered drill works great, but use on a very low setting and hand tighten a few screws until the adequate setting on the drill is found without stripping the poly.

4. Form plate over the edge and squeeze flat to top of the hood for a tight fit.
5. Install the eight larger screws (LAN030114048) on the top half of stainless steel corn row plate.

Refer to Figure 2

6. Repeat steps 2 - 5 for remaining hood and stainless steel corn row plate.
7. Lower hoods back to operating position or reinstall if removed from head in step 1.
8. Hoods should have no obstruction with gathering chain tracks as shown in Figure 2.

For further technical assistance,

Call Lankota Inc. at:

1-866-526-5682

Figure 1

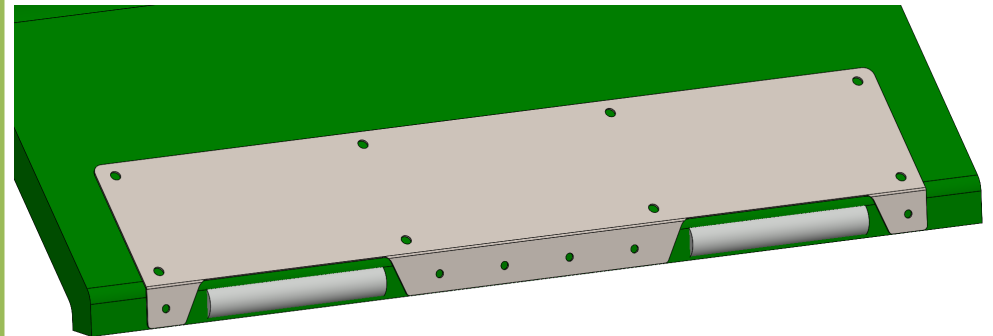


Figure 2

