

# LANSSC8R8

## Installation Instructions

Lankota GENERATION II Stalk Stomper® Mounting Kit for JD® C-Series 8 Row Corn Heads

8-Row Coverage

# LANKOTA®

270 West Park Avenue

Huron, SD 57350

866-526-5682

# Numerical Parts List

<b>Part Numbers</b>	<b>Description</b>	<b>Qty</b>
LANSSB77GRN	77" Stalk Stomper® Tool Bar	2
LANSS6532	86" Stalk Stomper® Welded Toolbar	1
LANSS600EF	Head End Mount	2
LANSS615M	2015+ Beam Mount	2
LANSS700H	Feederhouse Toolbar Mount	2
LANSS700L	Mount Plate for LANSS700H	2
LANSS704	Twist Lock 1/2" Pin	2
LANSS759	Flip-up Stomper Mount	6
<b>LANSS608R8BH</b>	<b>Box of Hardware</b>	<b>1</b>
LANFCJ9MC	1-3/8" Bi-Metal Hole Saw	1
<b>LANSS600MBH</b>	<b>Bag of Hardware</b>	<b>2</b>
LAN600UBOLT	U-Bolt 5/8" x 2.625" ID x 3.75" Length	2
LAN079UBOLT	U-Bolt 5/8" x 5.125" ID x 6.50" Length	2
LAN619UBOLT	U-Bolt 5/8" x 6.188" ID x 7.88" Length	2
LAN690830	5/8" Serrated Flange Nut	8
<b>LANSS668BH</b>	<b>Bag of Hardware</b>	<b>6</b>
LAN600UBOLT	U-Bolt 5/8" x 2.625" ID x 3.75" Length	2
LAN690830	5/8" Serrated Flange Nut	4
LANFNXC1	1/2" Flanged Nyloc Nut	1
LANFNHVK	1/2" x 2.50" Serrated Flange Bolt	1
<b>LANSS600IBH</b>	<b>Bag of Hardware</b>	<b>2</b>
LAN600UBOLT	U-Bolt 5/8" x 2.625" ID x 3.75" Length	2
LAN690830	5/8" Serrated Flange Nut	4
LAN3722	1/2" Serrated Flange Nut	2
LAN506K	1/2" x 1.50" Carriage Head Bolt	2
<b>LANSS650FCBH</b>	<b>Bag of Hardware</b>	<b>1</b>
LAN600UBOLT	U-Bolt 5/8" x 2.625" ID x 3.75" Length	4
LAN690830	5/8" Serrated Flange Nut	8
LAN3722	1/2" Serrated Flange Nut	4
LANF1ERQ	1/2" x 2" Carriage Bolt	4

# Pictorial Parts List

 <p>LANSSB77GRN (2)</p>		 <p>LANSS6532 (1)</p>		 <p>LANSS704 (2)</p>
 <p>LANSS600EF (2)</p>	 <p>LANSS615M (2)</p>	 <p>LANSS700H (2)</p>	 <p>LANSS700L (2)</p>	 <p>LANSS759 (6)</p>
 <p>LANF1ERQ (4)</p>	 <p>LAN506K (4)</p>	 <p>LAN3722 (8)</p>	 <p>LANFNHVK (6)</p>	 <p>LANFNXC1 (6)</p>
 <p>LAN600UBOLT (22)</p>	 <p>LAN619UBOLT (4)</p>	 <p>LAN079UBOLT (4)</p>	 <p>LAN690830 (52)</p>	 <p>LANFCJ9MC (1)</p>

## Preparation

1. Attach desired header to the combine. Lock the head to the combine.
2. Raise the head off the ground and lower the safety stop on the feeder house cylinder.
3. Set the parking brake on the combine.
4. Turn off the combine engine and remove the key.

OR

1. Set the desired header on a suitable header trailer.
2. Release the header from the combine and back it away.

## Stalk Stomper Disclaimer

### ***Stalk Stomper Disclaimer***

The most effective use of the Lankota Stalk Stomper® is achieved by adjusting the stomper pad so that when the corn head is at its normal cutting height, the pad of the shoe is 1" above the ground. Over compression of the spring can shorten the life of the stomper spring, increase wear on the poly liner, and may result in undue damage NOT covered by Lankota's Limited Warranty.

### **Stalk Stomper Height Adjustment**

To adjust Lankota Stalk Stomper shoes, watch this video found on YouTube: <https://youtu.be/Ukcq7NrCgpQ>  
and the Lankota website: <https://lankota.com/stalk-stompers.html>  
or scan the QR code to the right with a smart phone.





# Kit Installation



Figure 1



Figure 2

## Refer to Figures 1—3

1. Mount the feederhouse toolbar brackets (LANSS700H) to the head as shown (one on each side). Utilize the 1/2" hardware in the LANSS650FCBH and the LANSS700L plate.
2. Leave the carriage bolts slightly loose and hang a U-Bolt in the center sets of holes.

Figure 3





# Kit Installation



Figure 4

## Refer to Figures 4 & 5

3. Hang the LANSS6532 toolbar from the LANSS700H's. Slide one end in, and then back into the other.
4. Center the toolbar, install 600UBOLTS in the inner holes of the LANSS700H's and tighten all hardware.



Figure 5



# Kit Installation

## Refer to Figures 6—8

5. Mount the LANSS600EF brackets to the ends of the head.
6. Remove the factory M12 carriage bolts and replace with the 1/2" x 1.5" carriage bolts and nuts from the LANSS600IBH's.
7. Affix the brackets, but leave the 1/2" hardware loose enough to slide/straighten later.
8. Hang a 600UBOLT in each for toolbar install.

Figure 6



Figure 7



Figure 8





# Kit Installation



Figure 9

Figure 10



## Refer to Figures 9 & 10

9. Install a LANSS615M on the end of each side of the head; use the hardware in LANSS600MBH's.
10. Check the OEM foot stand pin—the handle needs to be towards the center of the head.
11. Slide the mount as close to the leg as possible and tighten the hardware.



# Kit Installation

Figure 11

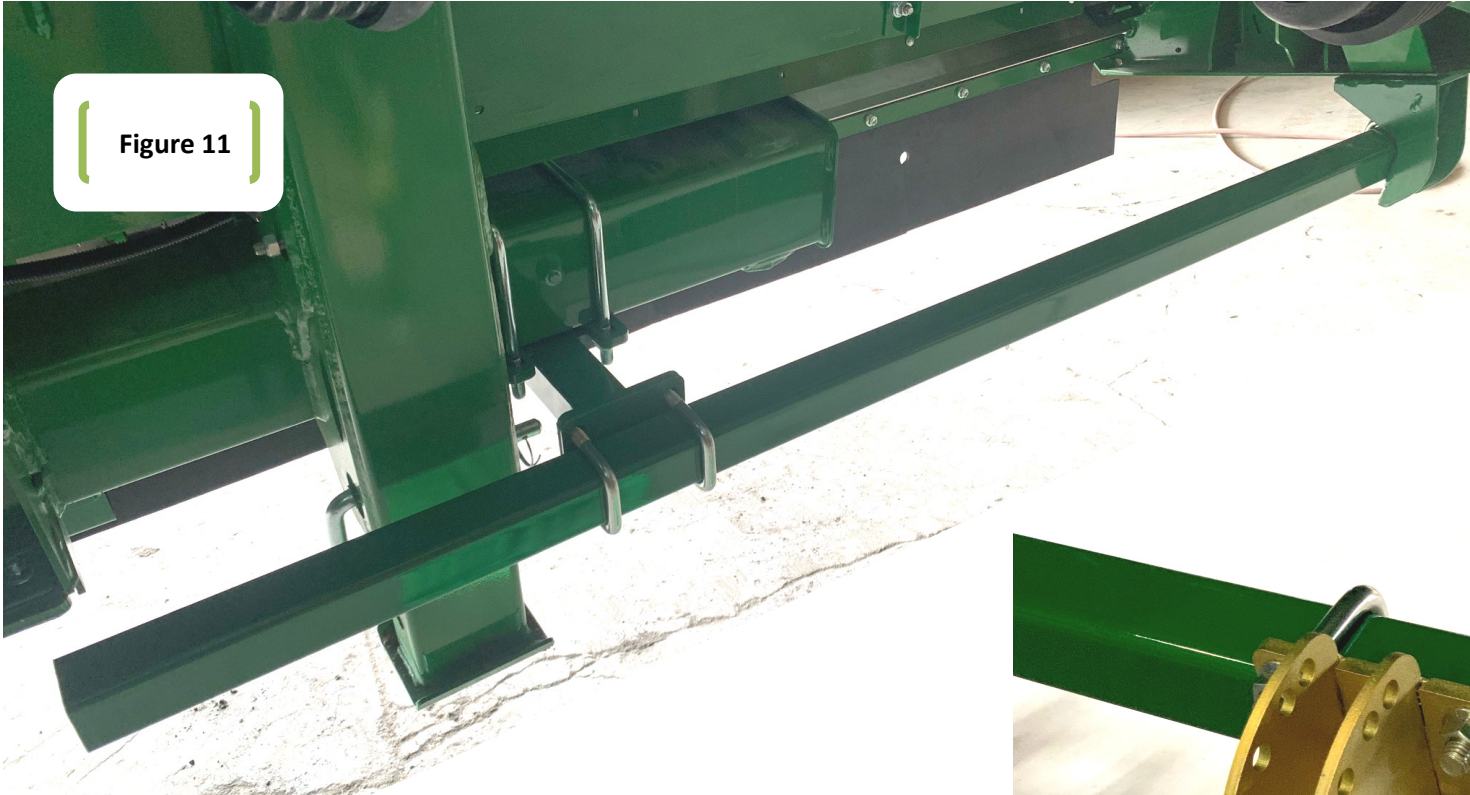


Figure 12



Figure 13



## Refer to Figures 11—13

12. Mount the 77" toolbars to the brackets with the 600UBOLTS and flange nuts in the bags of hardware.
13. Set the toolbar outer end flush with the LANSS600EF.
14. Square the toolbar with the head and tighten the 1/2" bolts in the end mounts.
15. Mount the six LANSS759 flip-ups to the toolbar with hardware in the LANSS668BH's. Ensure they are aligned with the row units.



# Kit Installation



Figure 14

## Refer to Figure 14

16. On the flip-up mounts, mounts the Stalk Stomper shoes with the provided 1/2" x 2.5" flange bolts and nyloc flange nuts.
17. Under the feederhouse, mount the shoes with the LANS704 twist lock pins.



**For further technical assistance,**

**Call Lankota Inc. at:**

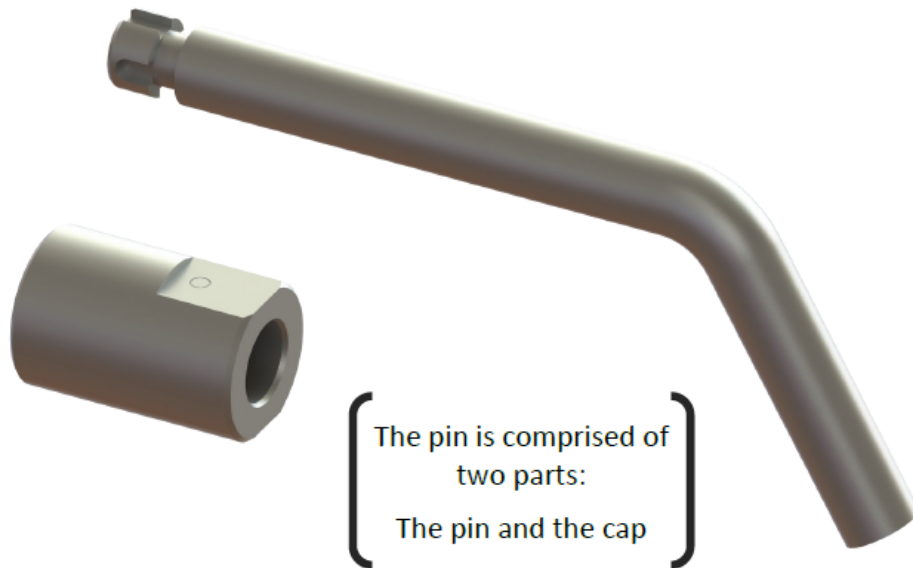
**1-866-526-5682**



# LANKOTA®

## LANSS704 Instructions

Lankota 1/2" Twist-Lock Pin



The LANSS704 is a patent pending pin designed by Lankota Inc. for the harsh environment of the field. The simple push, twist and release design ensures that the cap and pin cannot be separated by vibration or debris.

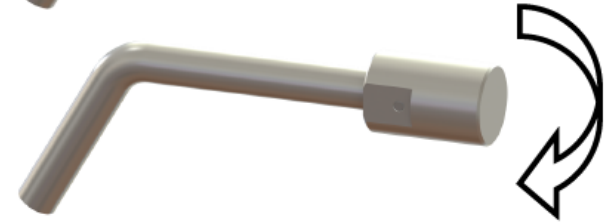
For any questions, please contact Lankota.

## Removing LANSS704

**Step 1:** Push the cap in and hold.



**Step 2:** Twist cap 90° left or right.

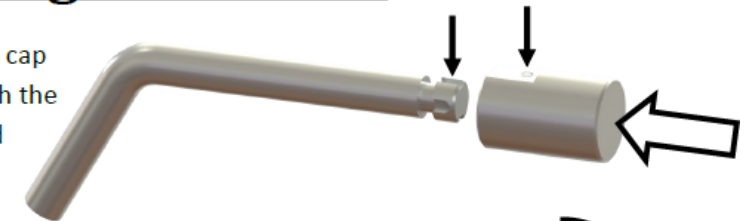


**Step 3:** Slide the cap off the pin.

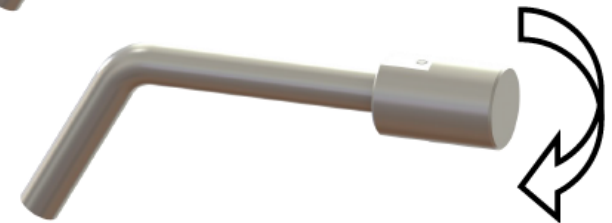


## Installing LANSS704

**Step 1:** Align the cap retaining pin with the open groove and push on.



**Step 2:** Twist cap 90° left or right.



**Step 3:** Release the cap and ensure it is secure.

