

LANSSC12R12

Installation Instructions

Lankota GENERATION II Stalk Stomper® Mounting Kit for JD® C-Series 12 Row, 30" Corn Heads

12-Row Coverage

LANKOTA®

**270 West Park Avenue
Huron, SD 57350
866-526-5682**

Numerical Parts List

Part Numbers	Description	Qty
LANSSB77GRN	77" Stalk Stomper® Tool Bar	2
LANSS6580	52" Stalk Stomper® Welded Toolbar	2
LANSS650FC1	Central Support for Toolbar	2
LANSS600J	Toolbar Joint Plate	1
LANSS600EF	Head End Mount	2
LANSS615M	2015+ Beam Mount	2
LANSS600P	Bolt Plate for LANSS615M	2
LANSS700H	Feederhouse Toolbar Mount	2
LANSS700L	Mount Plate for LANSS700H	2
LANSS759	Flip-up Stomper Mount	6
LANSS6X	Direct Mount Flip-up Kit	1
LANSS6XL	Direct Mount (Left)	1
LANSS6XR	Direct Mount (Right)	1
LANSS6XBH	Bag of Hardware	1
LAN079UBOLT	U-Bolt 5/8" x 5.125" ID x 6.50" Length	4
LAN619UBOLT	U-Bolt 5/8" x 6.188" ID x 7.88" Length	4
LAN690830	5/8" Serrated Flange Nut	8
LANFNXC1	1/2" Flanged Nyloc Nut	2
LANFNHVK	1/2" x 2.50" Serrated Flange Bolt	2
LANSS704	Twist Lock 1/2" Pin	4
LANFCJ9MC	1-3/8" Hole Saw	1

Numerical Parts List Continued

Part Numbers	Description	Qty
LANSSC12R12BH	Box of Hardware	1
LANSS704	Twist Lock 1/2" Pin	4
LANFB732	5/8" x 8" Hex Bolt	4
LANSS600MBH	Bag of Hardware	2
LAN600UBOLT	U-Bolt 5/8" x 2.625" ID x 3.75" Length	2
LAN079UBOLT	U-Bolt 5/8" x 5.125" ID x 6.50" Length	2
LAN619UBOLT	U-Bolt 5/8" x 6.188" ID x 7.88" Length	2
LAN690830	5/8" Serrated Flange Nut	8
LANSS668BH	Bag of Hardware	6
LAN600UBOLT	U-Bolt 5/8" x 2.625" ID x 3.75" Length	2
LAN690830	5/8" Serrated Flange Nut	4
LANFNXC1	1/2" Flanged Nyloc Nut	1
LANFNHVK	1/2" x 2.50" Serrated Flange Bolt	1
LANSS600IBH	Bag of Hardware	2
LAN600UBOLT	U-Bolt 5/8" x 2.625" ID x 3.75" Length	2
LAN690830	5/8" Serrated Flange Nut	4
LAN3722	1/2" Serrated Flange Nut	2
LAN506K	1/2" x 1.50" Carriage Head Bolt	2
LANSS650FCBH	Bag of Hardware	1
LAN600UBOLT	U-Bolt 5/8" x 2.625" ID x 3.75" Length	4
LAN690830	5/8" Serrated Flange Nut	8
LAN3722	1/2" Serrated Flange Nut	4
LANF1ERQ	1/2" x 2" Carriage Bolt	4
LANSS600JBH	Bag of Hardware	1
LAN600UBOLT	U-Bolt 5/8" x 2.625" ID x 3.75" Length	4
LAN690830	5/8" Serrated Flange Nut	8

Pictorial Parts List

 LANSSB77GRN (2)	 LANSS6580 (2)		 LANSS704 (4)	 LANFB732 (4)		
 LANSS650FC1 (2)	 LANSS600J (1)	 LANSS600EF (2)	 LANSS615M (2)	 LANSS6XL (1)	 LANSS6XR (1)	 LANFCJ9MC (1)
 LANSS700H (2)	 LANSS700L (2)	 LANSS759 (6)	 LANSS600P (2)	 LANF1ERQ (4)	 LAN506K (4)	 LAN3722 (8)
 LAN600UBOLT (28)	 LAN619UBOLT (8)	 LAN079UBOLT (8)	 LAN690830 (72)	 LANFNHVK (8)	 LANFNXC1 (8)	

Preparation

1. Attach desired header to the combine. Lock the head to the combine.
2. Raise the head off the ground and lower the safety stop on the feeder house cylinder.
3. Set the parking brake on the combine.
4. Turn off the combine engine and remove the key.

OR

1. Set the desired header on a suitable header trailer.
2. Release the header from the combine and back it away.

Stalk Stomper Disclaimer

Stalk Stomper Disclaimer

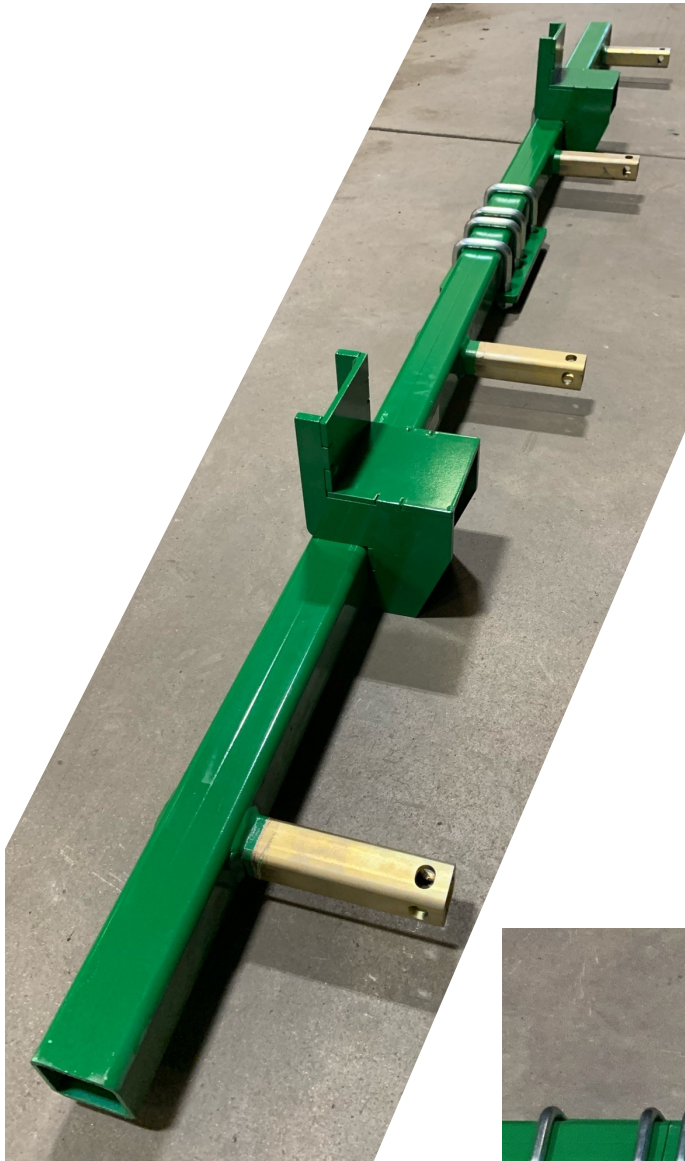
The most effective use of the Lankota Stalk Stomper® is achieved by adjusting the stomper pad so that when the corn head is at its normal cutting height, the pad of the shoe is 1" above the ground. Over compression of the spring can shorten the life of the stomper spring, increase wear on the poly liner, and may result in undue damage NOT covered by Lankota's Limited Warranty.

Stalk Stomper Height Adjustment

To adjust Lankota Stalk Stomper shoes, watch this video found on YouTube: <https://youtu.be/Ukcq7NrCgpQ>
and the Lankota website: <https://lankota.com/stalk-stompers.html>
or scan the QR code to the right with a smart phone.



Kit Installation

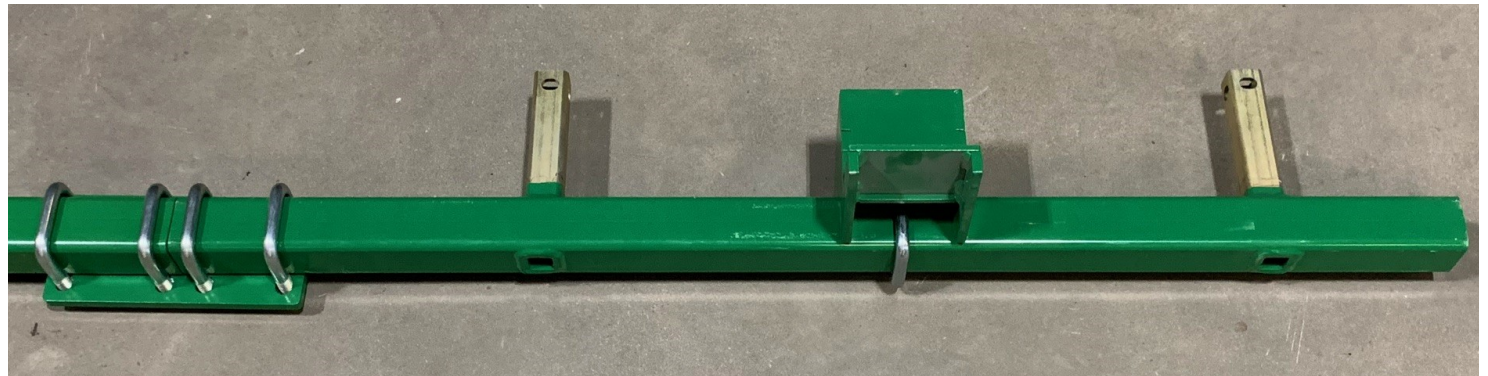


Refer to Figures 1 & 2

Assemble the toolbar that goes under the feederhouse.

1. Join the two LANSS6580 toolbars together (longer ends touching) with the LANSS600J plate and LANSS600JBH bag of hardware and tighten.
2. Mount a LANSS650FC1 on each bar as shown with a 600UBOLT and two 5/8" flange nuts. Take the hardware from a LANSS600IBH bag. Leave them loose enough to slide by hand.

Figure 2



Kit Installation



Figure 3



Figure 4

Refer to Figures 3—5

3. Mount the feederhouse toolbar brackets (LANSS700H) to the head as shown (one on each side). Utilize the hardware in the LANSS650FCBH and the LANSS700L plate.
4. Leave the carriage bolts slightly loose and hang a U-Bolt in the outer sets of holes.

Figure 5



Kit Installation

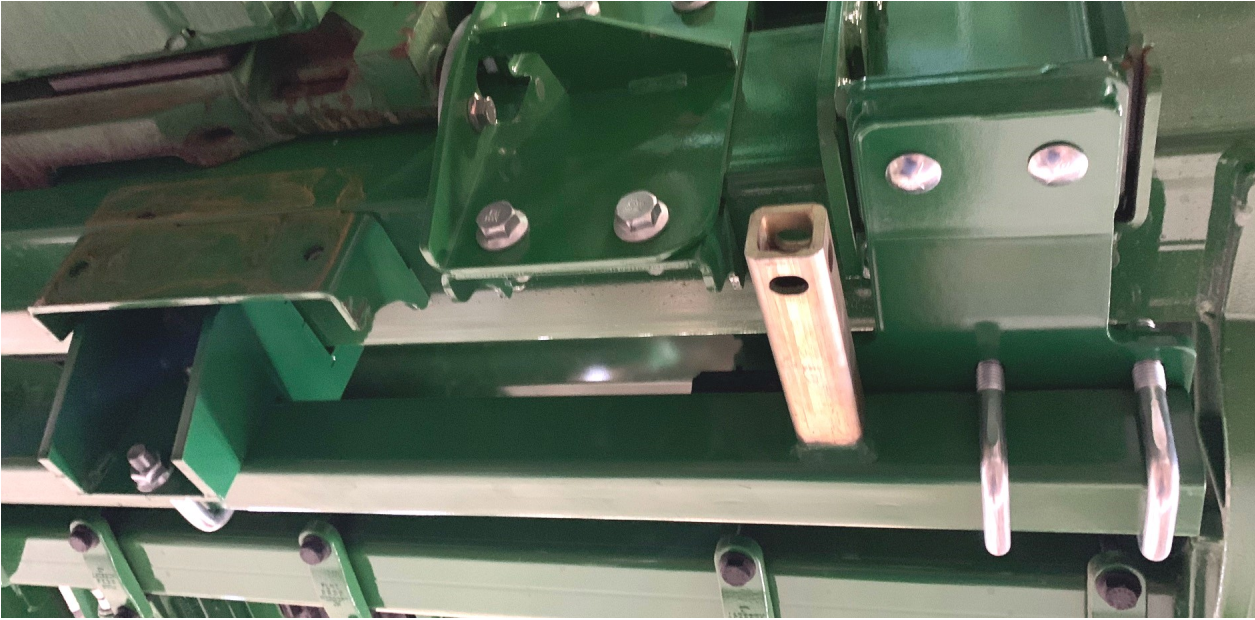


Figure 6



Figure 7

Refer to Figures 6 & 7

5. Hang the previously assembled toolbar from the LANS700H's. Slide one end in, and then back into the other.
6. Locate the LANS650FC1's within the shown flanges and slide them inwards as much as possible.
7. Center the toolbar, install 600UBOLTS in the center holes of the LANS700H's and tighten all hardware.

Kit Installation

Refer to Figures 8 & 9

8. Install the LANS6X kit on the outer sides of the stands.
9. Align the tubes with the rows as close as possible.

Figure 8

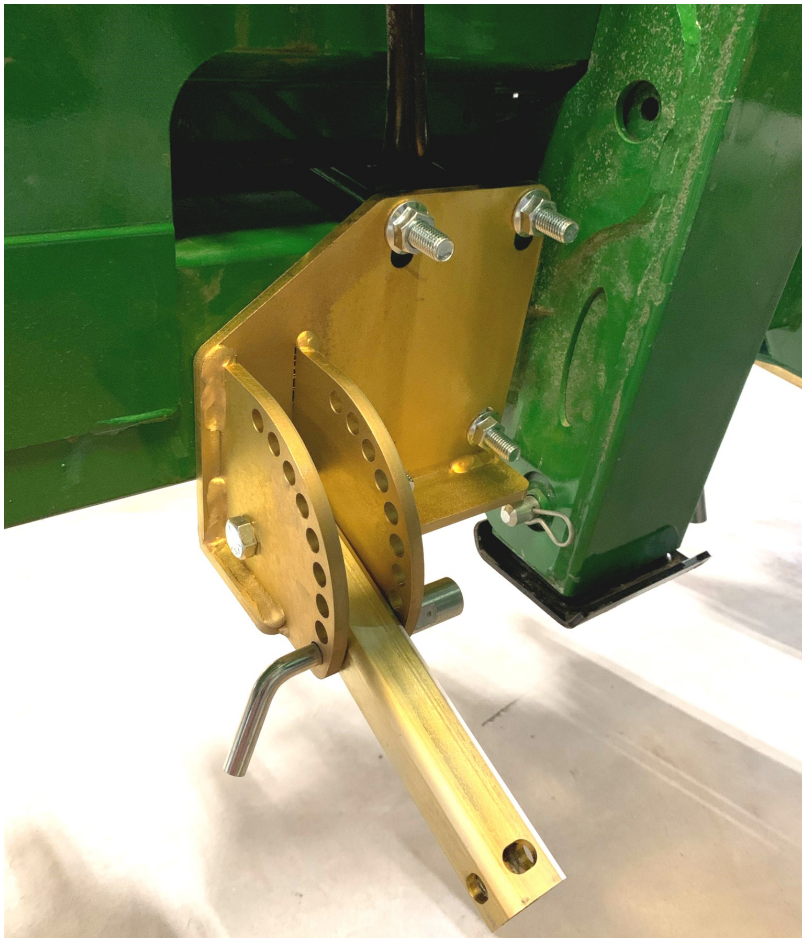


Figure 9



Kit Installation

Refer to Figures 10—12

10. Mount the LANSS600EF brackets to the ends of the head.
11. Remove the factory M12 carriage bolts and replace with the 1/2" x 1.5" carriage bolts and nuts from the LANSS600IBH's.
12. Affix the brackets, but leave the 1/2" hardware loose enough to slide/straighten later.
13. Hang a 600UBOLT in each for toolbar install.

Figure 10



Figure 11



Figure 12



Kit Installation

Figure 13



Figure 14



Figure 15



Refer to Figures 13—16

14. Install a LANSS615M under each driveline casting; use the hardware in LANSS600MBH's.
15. On the outer side you will replace a U-Bolt with (2) 5/8" x 8" bolts (LANFB732) and a LANSS600P plate.
16. If there is not enough room for the U-Bolt, use the hole saw to remove the needed material.
17. Once mounted, tighten the hardware.

Figure 16



Kit Installation



Figure 17

Refer to Figures 17 & 18

18. Mount the 77" toolbars to the brackets with the 600UBOLTS and flange nuts in the bags of hardware.
19. Set the toolbar outer end flush with the LANSS600EF.
20. Mount the six LANSS759 flip-ups to the toolbar with hardware in the LANSS668BH's. Ensure they are aligned with row units.

If upgrading from a 612 or 712 head,
cut your 90" bars down to 77".

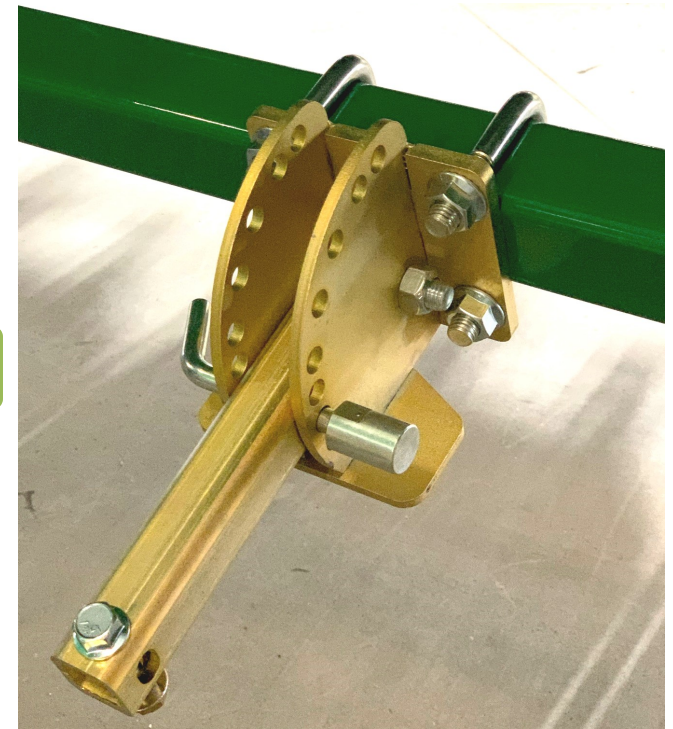


Figure 18

Kit Installation



Figure 19

Refer to Figure 19

21. On the flip-up mounts, mounts the Stalk Stomper shoes with the provided 1/2" x 2.5" flange bolts and nyloc flange nuts.
22. Under the feederhouse, mount the shoes with the LANS704 twist lock pins.



For further technical assistance,

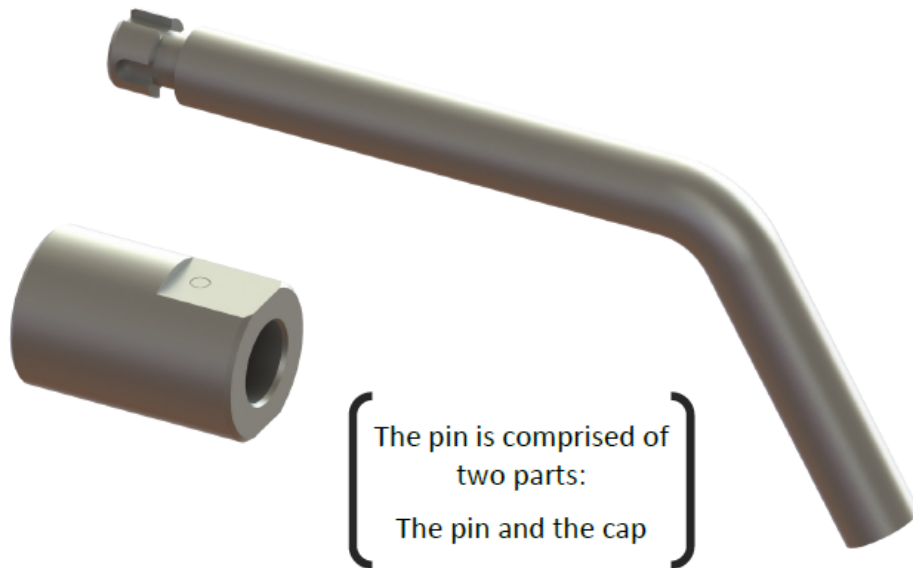
Call Lankota Inc. at:

1-866-526-5682

LANKOTA®

LANSS704 Instructions

Lankota 1/2" Twist-Lock Pin

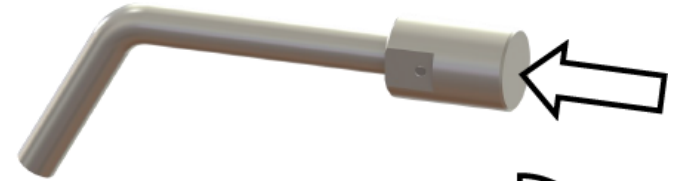


The LANSS704 is a patent pending pin designed by Lankota Inc. for the harsh environment of the field. The simple push, twist and release design ensures that the cap and pin cannot be separated by vibration or debris.

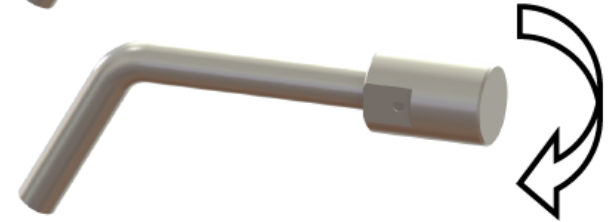
For any questions, please contact Lankota.

Removing LANSS704

Step 1: Push the cap in and hold.



Step 2: Twist cap 90° left or right.

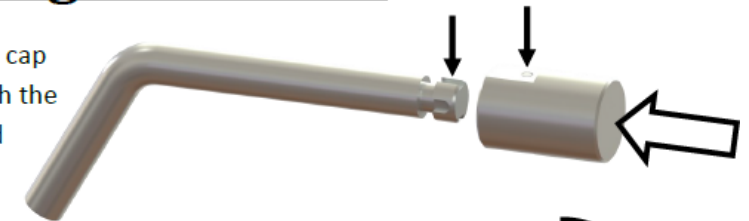


Step 3: Slide the cap off the pin.

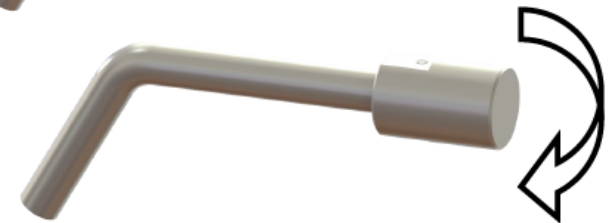


Installing LANSS704

Step 1: Align the cap retaining pin with the open groove and push on.



Step 2: Twist cap 90° left or right.



Step 3: Release the cap and ensure it is secure.

