

LANSS11362

Installation Instructions

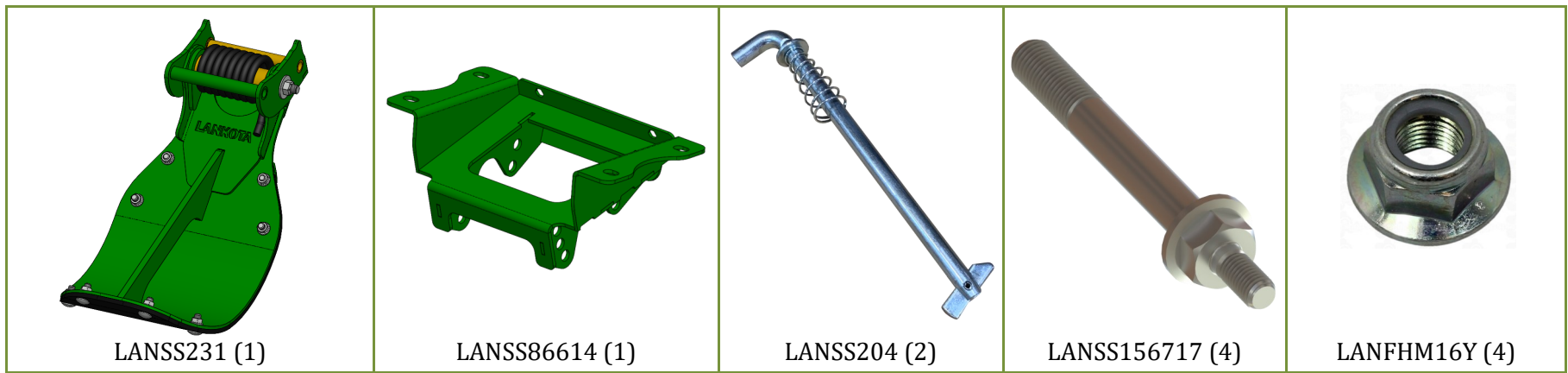
Lankota GENERATION III Stalk Stomper® Mounting Kit
for JD® 6XX, 7XX & C-Series Corn Heads (2012 and Newer)

LANKOTA®

270 West Park Avenue
Huron, SD 57350
866-526-5682

Parts List

Part Numbers	Description	Qty
LANSS231	Stalk Stomper, Under-Frame, Green	1
LANSS86614	Stalk Stomper Mount, JD 2012+	1
LANSS204	1/2" Pin, Spring Tension	2
LANSS156717	M16 & M12 Flange Bolt, Double-Ended	4
LANFHM16Y	M12 Flange Nyloc	4



LANSS231 (1)

LANSS86614 (1)

LANSS204 (2)

LANSS156717 (4)

LANFHM16Y (4)

Lankota HIGHLY RECOMMENDS having a jack stand system to keep the shoes and mounts from carrying the head's weight when sat on the ground.

Stalk Stomper Disclaimer

The most effective use of the Lankota Stalk Stomper® is achieved by adjusting the stomper pad so that when the corn head is at its normal cutting height, the pad of the shoe is 1" above the ground. Over compression of the spring can shorten the life of the stomper spring, increase wear on the poly liner, and may result in undue damage NOT covered by Lankota's Limited Warranty.

Row Installation



Figure 1

Preparation

1. Attach header to the combine and lock it to the combine.
2. Raise the head and lower the safety stop on the feeder house cylinder.
3. Set the parking brake on the combine.
4. Turn off the combine engine and remove the key.

Refer to Figures 1—4

5. On the desired row unit, remove and replace one of the mounting bolts with a double-ended flange bolt (LANSS156717) and tighten to the torque specification in OEM Owner's Manual.
6. Repeat three times for other mount bolts.
7. Fasten mounting bracket (LANSS86614) to the new bolts with the M12 flange nyloc nuts as shown.



Figure 2



Figure 3

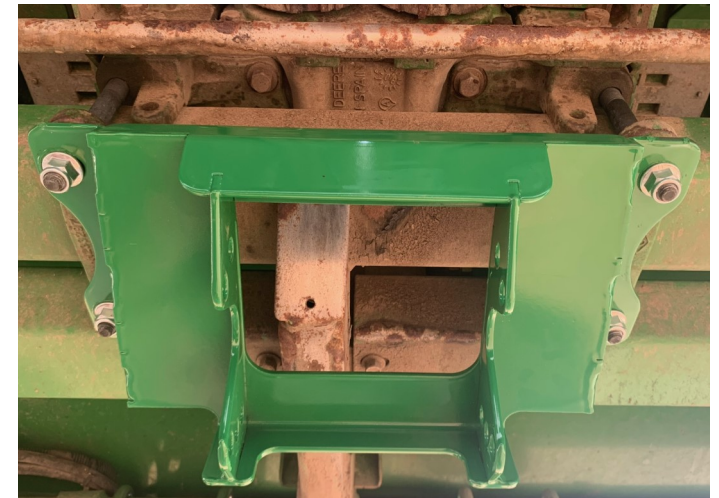


Figure 4

Row Installation

Refer to Figures 5 & 6

8. To affix the stalk stomper (LANSS231) to the mounting bracket, align the removable pipe with **upper, front hole** in mount and pin with a LANSS204.
9. The rear three holes are for up/down adjustment of shoe. When head is at running height, shoe should be just touching or slightly off the ground. Pin in place with other pin (LANSS204).

Refer to Figures 7 & 8

When setting the head on a trailer, put shoes in the storage position: move **rear pin** to top hole, remove front pin, lift shoe and then insert front pin into bottom hole. Let the shoe rest against the pin as shown.

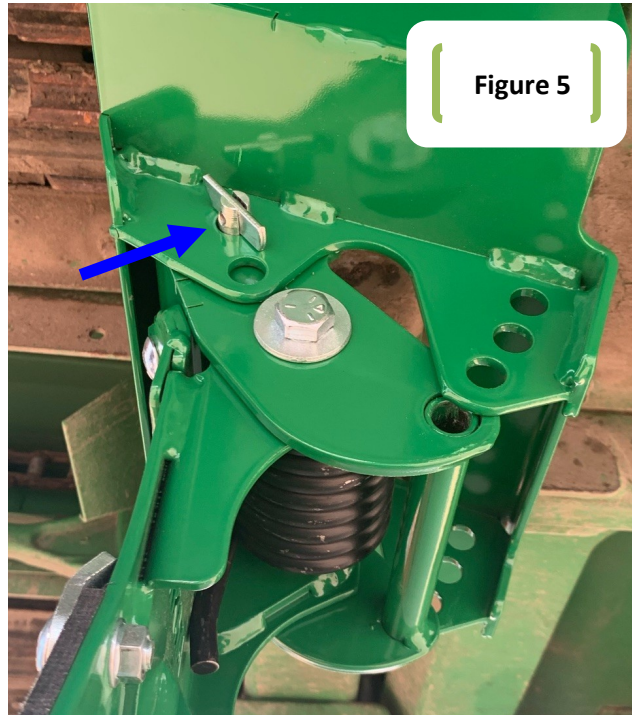


Figure 5



Figure 6



Figure 7



Figure 8

For further technical assistance,

Call Lankota Inc. at:

1-866-526-5682