

# **LANSR600FD**

## **Installation Instructions**

**Lankota Stalk Roller Mounting Kit for JD® 600 Series Flex Draper Heads**

**Combine Tire Coverage**

# **LANKOTA®**

**270 West Park Avenue**

**Huron, SD 57350**

**866-526-5682**

# Numerical Parts List

<b>Part Numbers</b>	<b>Description</b>	<b>Qty</b>
LANSSB67GRN	67" Stalk Stomper® Tool Bar	2
LANSS650QD	Straight Stalk Stomper Mount	6
LANSS6FD101	LANSS600FD Outer Mount Assembly	2
LANSS6FD102	LANSS600FD Inner Mount Assembly	2
LANSS6FD103	LANSS600FD Stalk Roller Assembly	2
LANSS6FD04	Outer Mount Support Tube	2
LANSS6FD09	Outer Mount Support Bracket	2
LANSS6FD10	Outer Mount Support Bolt Plate	4
LANSS6FD12	Outer Mount Support Slider	2
LANSS6FD14	Inner Mount Bolt Plate	2
LANSS6FDWR	Lift Assist Wrench	1

# Numerical Parts List (Continued)

<b>Part Numbers</b>	<b>Description</b>	<b>Qty</b>
<b>LANSS600FDBH</b>	<b>Box of Hardware</b>	<b>1</b>
LANFCJ9MC	1-3/8" Hole Saw	1
LAN3722	1/2" Serrated Flange Nut	24
LAN600UBOLT	U-bolt 5/8" x 2.625" ID x 3.75" Length	8
LAN690830	5/8"-11 Serrated Flange Nut	16
LANF011G	1/2" x 4.5" Hex Bolt	8
REDB512	1/2" x 3" Hex Bolt	4
LAN22A32	1/2" x 1.5" Hex Bolt	8
LANFWS55	1/2" SAE Flat Washer	24
REDWL52	1/2" Lock Washer	8
LAN1137030	1/2" Nyloc Nut	4
LANFHFNJH	5/8" x 9" Hex Bolt	8
LANFWS57	5/8" SAE Flat Washer	16
LAN1626000	5/8" Nyloc Nut	8
LANHH21987	5/16" x 3.5" Wirelock Pin	1
LAN700RUBOLT	U Bolt for 7" Round Tube	4
<b>LANSS668BH</b>	<b>Bag of Hardware</b>	<b>6</b>
LAN600UBOLT	U-bolt 5/8" x 2.625" ID x 3.75" Length	2
LAN690830	5/8"-11 Serrated Flange Nut	4
LANFNXC1	1/2"-13 Flanged Nyloc Nut	1
LANFNHVK	1/2"-13 x 2.50" Serrated Flange Bolt	1

# Pictorial Parts List

						
LANSS67GRN (2)	LANSS6FD103 (2)	LANSS6FD101 (2)	LANSS6FD102 (2)	LANSS6FD09 (2)	LANSS6FD04 (2)	LANSS6FD14 (2)
						
LANSS6FD12 (2)	LANSS6FD10 (4)	LANSS650QD (6)	LANSS6FDWR (1)	LANFCJ9MC (1)	LANFWS57(16)	LANFHFNJH (8)
						
LAN600UBOLT (20)	LAN690830 (40)	LAN700RUBOLT (4)	LAN3722 (24)	LANF011G (8)	LAN22A32 (8)	REDB512 (4)
						
LAN1626000 (8)	LANFWS55 (24)	LAN1137030 (4)	REDWL52 (8)	LANHH21987 (1)	LANFNXC1 (6)	LANFNHVK (6)

## Preparation

1. Attach desired header to the combine. Lock the head to the combine.
2. Raise the head off the ground and lower the safety stop on the feeder house cylinder.
3. Set the parking brake on the combine.
4. Turn off the combine engine and remove the key.

OR

1. Set the desired header on a suitable header trailer.
2. Release the header from the combine and back it away.

## IMPORTANT NOTES

- **To attach or detach a combine from a header with this kit installed, the rollers MUST be in the DOWN position. Failure to do so could result in damage to the combine feederhouse components.**
- **Stalk rollers MUST be folded and pinned in the UP position while traveling on a header cart.**

# Kit Installation

## Refer to Figure 1

1. If your header is on a trailer, make sure that the lower rests are not inside the position shown in the image. If they are, you may need to adjust them as they will interfere with the stalk roller mounts.

Figure 1



# Kit Installation

## Refer to Figures 2A and 2B

2. Temporarily disconnect the outside hydraulic hose that runs across the rear bottom portion of the header. This will be the one closest to the gusset on the diagonal frame tube (circled in yellow in Figure 2A).

**NOTE:** This step only needs to be done if the U-Bolts that go around the lower frame tube cannot be properly positioned.

Figure 2A

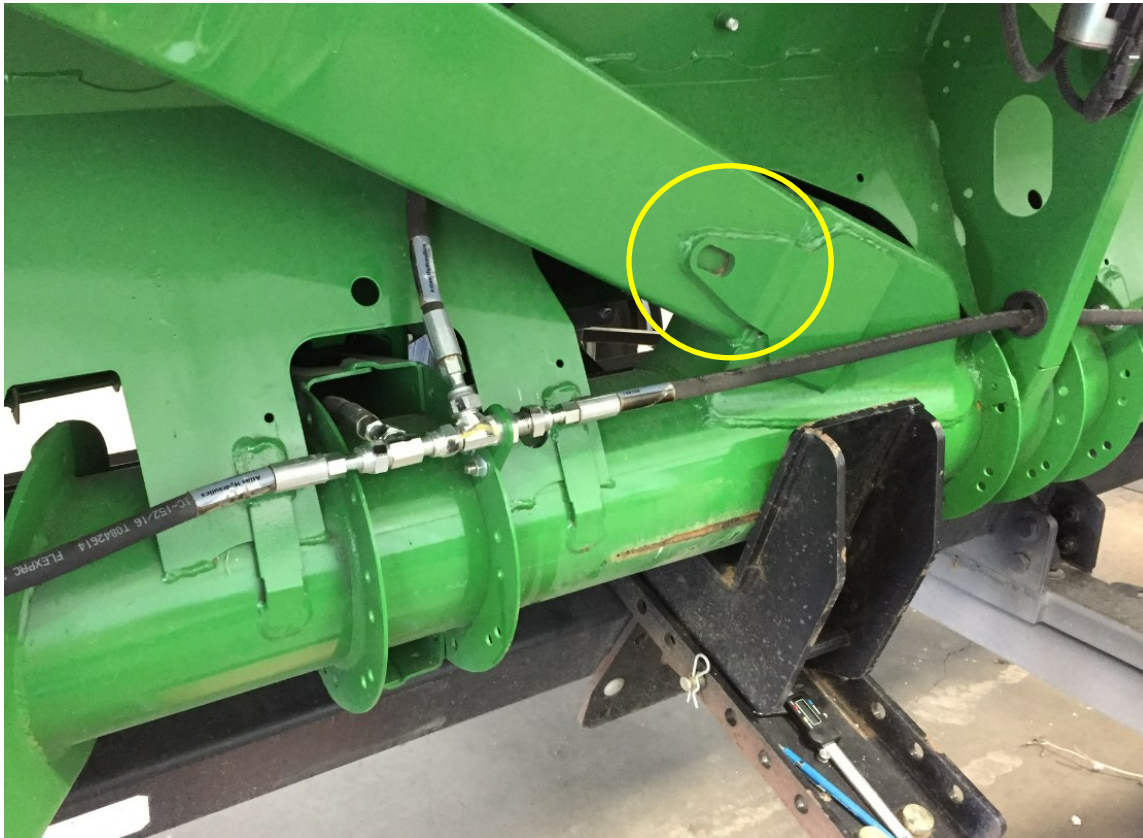


Figure 2B



# Kit Installation

## Refer to Figure 3

3. Below is an image of an assembled outside mount setup. Notice the top set of ears on the Outer Mount Support Bracket (LANSS6FD09) line up with the Outer Mount Assembly (LANSS6FD101) and the Outer Mount Support Tube (LANSS6FD04). If the Outer Mount Assembly can fit between the sheet metal on the back of the header and the circled gusset, you may be able to skip over steps 4-6, if not, you may need to cut out some sheet metal to install the U-Bolt necessary to connect the Outer Mount Assembly.

Figure 3





# Kit Installation

## Refer to Figures 4 through 6

4. Measure over no more than 2.50" from the edge of the sheet metal, this will be where the outside of the U-Bolt goes through the sheet metal. Cut a round hole as close to the round tube as possible.
5. Cut another hole roughly 2.50" above the first one. This will give the U-Bolt enough room to rotate around the tube during installation.
6. Use a cutoff wheel to make a slot by connecting the two holes.

Figure 4

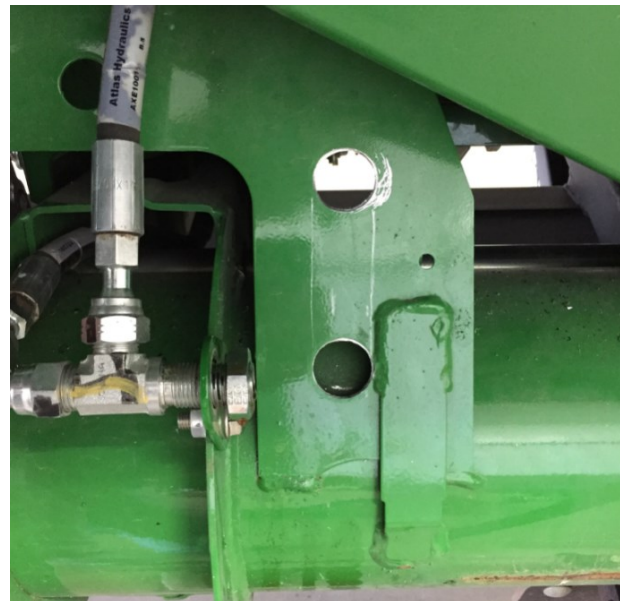


Figure 5

Figure 5



# Kit Installation

## Refer to Figures 7 & 8

7. Using two round U-Bolts (LAN700RUBOLT) and four 1/2" Serrated Flange Nuts (LAN3722) temporarily clamp the Outer Mount Assembly (LANSS6FD101) to the lower round tube. Re-connect and tighten the hydraulic hose that was disconnected in step 2.
8. Using the Inner Mount Bolt Plate (LANSS6FD14), four 5/8" x 9" bolts (LANFHFNJH), eight 5/8" SAE Washers (LANFWS57) and four 5/8" Nyloc Nuts (LAN1626000) install the Inner Mount Assembly (LANSS6FD102) on the rectangular tube across the bottom of the header. It should be 32"-38" inside of the Outer Mount Assembly, measured from center to center.

Figure 7



Figure 8



# Kit Installation

## Refer to Figures 9

9. Using four 1/2" x 4.5" Hex Bolts (LANF011G), four 1/2" Serrated Flange Nuts (LAN3722), four 1/2" SAE Flat Washer (LANFWS55), and four 1/2" Lock Washers (REDWL52) install the Outer Mount Support Bracket (LANSS6FD09) with the Bolt Plates (LANSS6FD10) on the back side of the tube. Make sure the upper set of ears are vertical. These are the ones that will be used to connect the support tube to the Outer Mount Assembly (LANSS6FD101).

Figure 9



# Kit Installation

## Refer to Figure 10

10. Lay the 67" toolbar (LANSS67GRN) across both the Inner and Outer mount assemblies and make sure it is parallel with the header. If not, loosen and adjust the Outer Mount Assembly (LANSS6FD101) to match the Inner Mount Assembly (LANSS6FD102). Then tighten up the round U-bolts to hold the Outer Mount Assembly in place.

Figure 10



# Kit Installation

## Refer to Figure 11

11. Loosely install the Outer Mount Support Slider (LANSS6FD12) using four 1/2" x 1.5" Hex Bolts (LAN22A32), four 1/2" SAE Washers (LANFWS55), and four 1/2" Serrated Flange Nuts (LAN3722). Connect the support bracket to the slider with the Outer Mount Support Tube (LANSS6FD04), two 1/2" x 3" Hex Bolts (REDB512), four 1/2" SAE Washers (LANFWS55), and two 1/2" Nyloc Nuts (LAN1137030). If the 67" toolbar is still parallel to the header, all hardware can be tightened at this point.

Figure 11



# Kit Installation

## Refer to Figures 12 & 13

12. Using the 5/8" U-Bolts (LAN600UBOLT) and 5/8" Serrated Flange Nuts (LAN690830) fasten the square toolbar tube (LANSS67GRN) to the Outer and Inner Mount Assemblies (LANSS6FD101 & LANSS6FD102). Do not tighten at this time.
13. Make sure the toolbar is in a position so that it clears the plastic cover on the outside of the combine feederhouse, while still covering all of the inside tire.

Figure 12



Figure 13

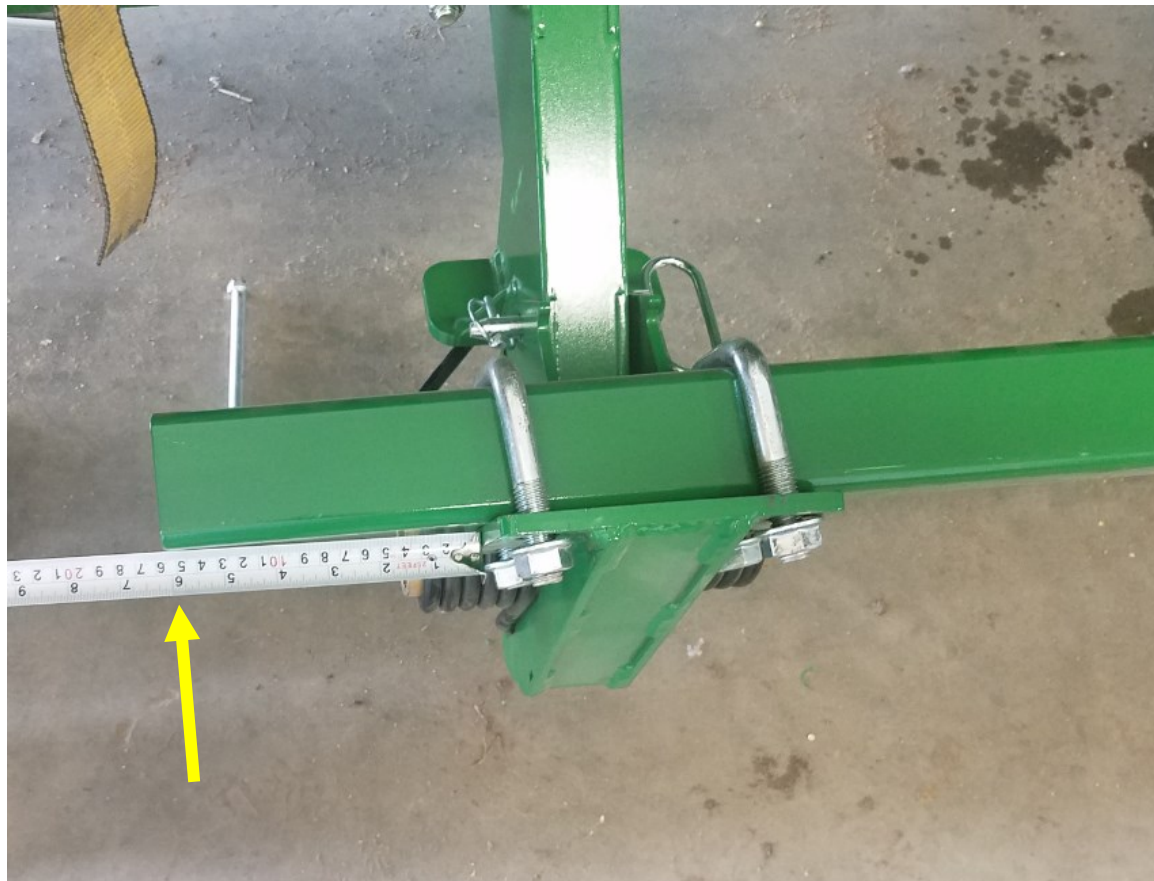


# Kit Installation

## Refer to Figure 14

14. Make sure you have at least 6" of toolbar sticking inside of the Inner Mount Assembly. This will ensure you have enough room to mount the Stalk Roller Assembly. You may tighten the toolbar hardware at this point.

Figure 14



# Kit Installation

## Refer to Figures 15 & 16

15. Using the 5/8" U-Bolts (LAN600UBOLT) and 5/8" Serrated Flange Nuts (LAN690830) fasten the Straight Stalk Stomper Mount (LANSS650QD) to the square toolbar tube (LANSS67GRN). Make sure the LANSS650QD is on the same side of the toolbar as the Inner and Outer Mount Assemblies. Do not tighten at this time.
16. Using a forklift or other lifting device, slide the Stalk Roller Assembly (LANSS6FD103) onto the Straight Stalk Stomper Mounts (LANSS650QD) and fasten with the provided 1/2" x 2.5" Flange Bolts (LANFNHVK) and the 1/2" Flanged Nyloc Nuts (LANFNXC1). You may now tighten all hardware at this time.

Figure 15



Figure 16





# Kit Installation

## Refer to Figure 17

17. Steps 1 through 16 may be repeated to install the rest of the kit on the opposite side of the header.

Figure 17



# Kit Installation

## Refer to Figures 18A through 18C

18. To determine the proper height setting, the roller assemblies will need to be lowered, and the header attached to a combine.

**NOTE:** The following instruction will take a fair amount of physical effort, make sure to get help if you don't think you are physically able to safely execute these steps.

### TO LOWER THE ROLLER ASSEMBLY:

- Remove the rotation lock pins (circled in YELLOW)
- Slide the provided toolbar wrench (LANSS6FDWR) over the end of the toolbar nearest to the rotation latch (circled in RED).
- Make sure nothing is under the roller assembly and your hands and feet are out of the way.
- With lifting pressure on the toolbar wrench, push back (toward the header) on the rotation latch to release it. Slowly lower the roller assembly to the ground with the toolbar wrench.
- Re-install the rotation lock pins at the proper height for your combine.

Figure 18A



Figure 18B



Figure 18C



# Kit Installation

## Refer to Figure 19

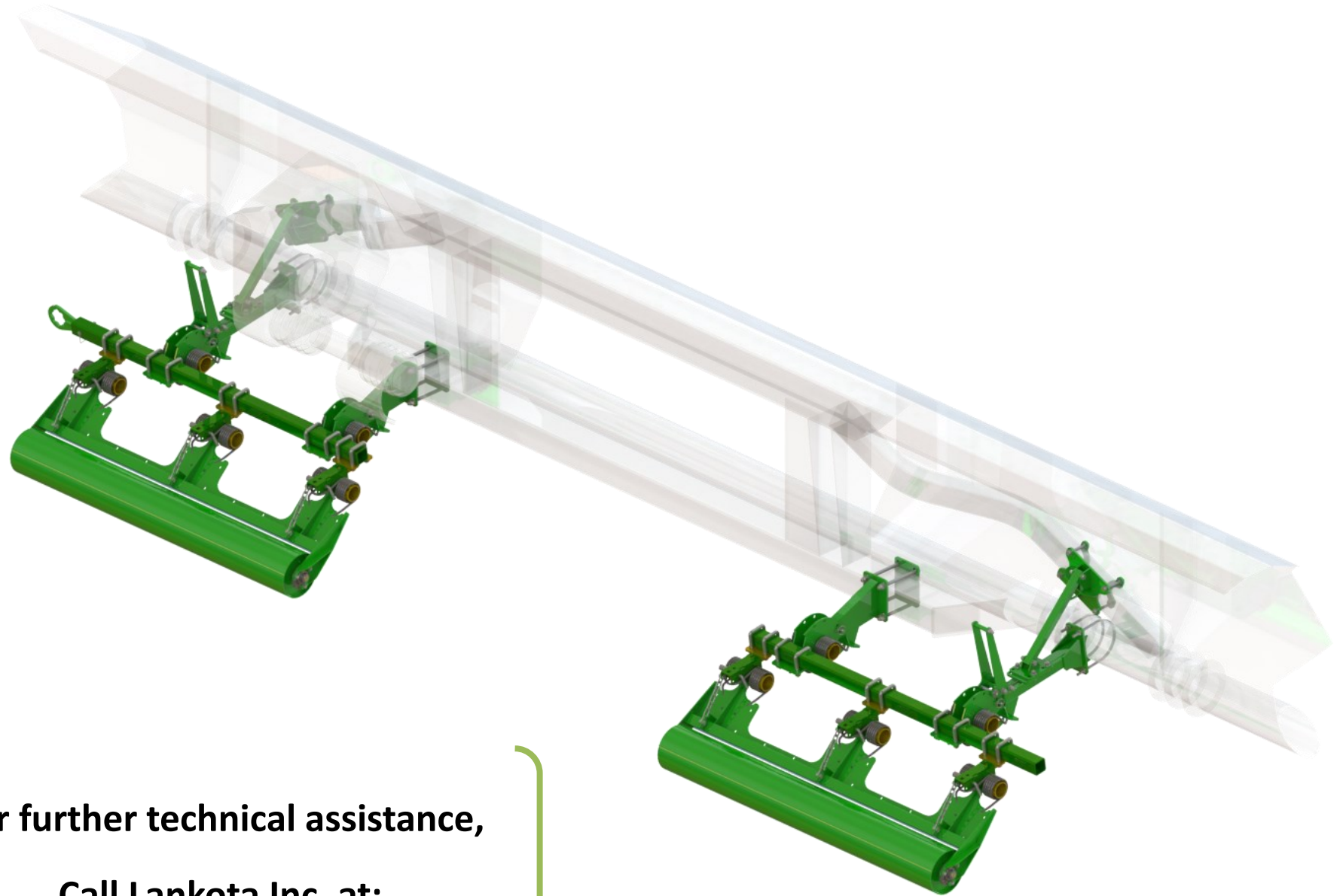
**NOTE: The stalk roller assembly will need to be in the lowered position to hook/unhook the combine from the header.**

19. Make sure when the header is at running height, the rollers apply slight down pressure on the ground. Adjustments can be made with the toolbar pivot pin location, or with the chain on the Stalk Roller Assembly. The Lift Assist Wrench (LANSS6FDWR) can be stored in the end of the toolbar using the provided 5/16" x 3.5" Wirelock Pin (LANHH21987).

**NOTE: When lifting the stalk roller assembly with the Lift Assist Wrench, it will automatically latch when in the UP position. This latch is only meant to be used for temporary relief until the rotation lock pins can be installed!!**

Figure 19





**For further technical assistance,**

**Call Lankota Inc. at:**

**1-866-526-5682**