

# **LANSPCAT23**

## **Installation Instructions**

**Lankota Single Point Mount**

**For the Lower Arms of a Category 2, 3 or 3N 3-Point**

# **LANKOTA®**

**270 West Park Avenue  
Huron, SD 57350  
866-526-5682**

# Numerical Parts List

Part Numbers	Description	Qty
LANSP205	Cat 2 - 3N Single Point Bar	1
LANSP206	Cat 2 - 3N Single Point Threaded Arm	1
LANSP207	Cat 2 - 3N Single Point Orientation Arm	1
LANSP208	Cat 2 - 3N Single Point 1-1/8" Wing Nut	1
LANHH21195	Cat 2 - 3N Bushing	2
LANSP222	Single Point Orientation Clamp	2
LANSP226	Rubber Washer, 1-1/8"	2
LANFOEM0	7/8" SAE Flat Washer	4
LAN204K	5/16" x 1" Carriage Bolt	2
LAN1133	5/16" Flat Washer	2
REDKRJ8	5/16" Top Lock Nut	2
RED21940	7/16" x 1.75" Lynch Pin	1
LANHH21981	5/16" x 3" Square Wire-Lock Pin	2
LANSP002	Single Point 6-Port Block Spacer	4
<b>LANSPUQHBH</b>	<b>Single Point Block Mounting Hardware</b>	<b>2</b>
LANFJ9F2	M8 x 45mm Flanged Hex Bolt	4
LANFE01V	M8 x 30mm Socket Head Screw	4
LANFQ65N	M8 Flanged Nyloc	4
LANF2CRC	3/8" x 8" Carriage Bolt	4
LAN18000	3/8" Flat Washer	4
REDWL53	3/8" Lock Washer	4
REDNAF3	3/8" Hex Nut	4

# Pictorial Parts List

 <p>LANSPP205 (1)</p>		 <p>LANSPP206 (1)</p>	 <p>LANSPP207 (1)</p>	 <p>LANSPP208 (1)</p>
 <p>LANHH21195 (2)</p>	 <p>LANSPP222 (2)</p>	 <p>LANSPP226 (2)</p>	 <p>LANFOEM0 (4)</p>	 <p>LAN204K (2)</p>
 <p>LAN1133 (2)</p>	 <p>REDKRJ8 (2)</p>	 <p>RED21940 (1)</p>	 <p>LANHH21981 (2)</p>	
	 <p>LANSPP002 (2)</p>	 <p>LANFE01V (4)</p>	 <p>LANFQ65N (4)</p>	 <p>LANFJ9F2 (4)</p>

# Kit Installation



Figure 1

## Refer to Figures 1 & 2

1. Loosely attach the clamps (LANSP222) to the orientation arm (LANSP207). Insert the carriage bolts (LAN204K) as shown.
2. Overlap the clamps and retain them with the 5/16" washers and nuts (LAN1133 & REKRJ8). Don't tighten.

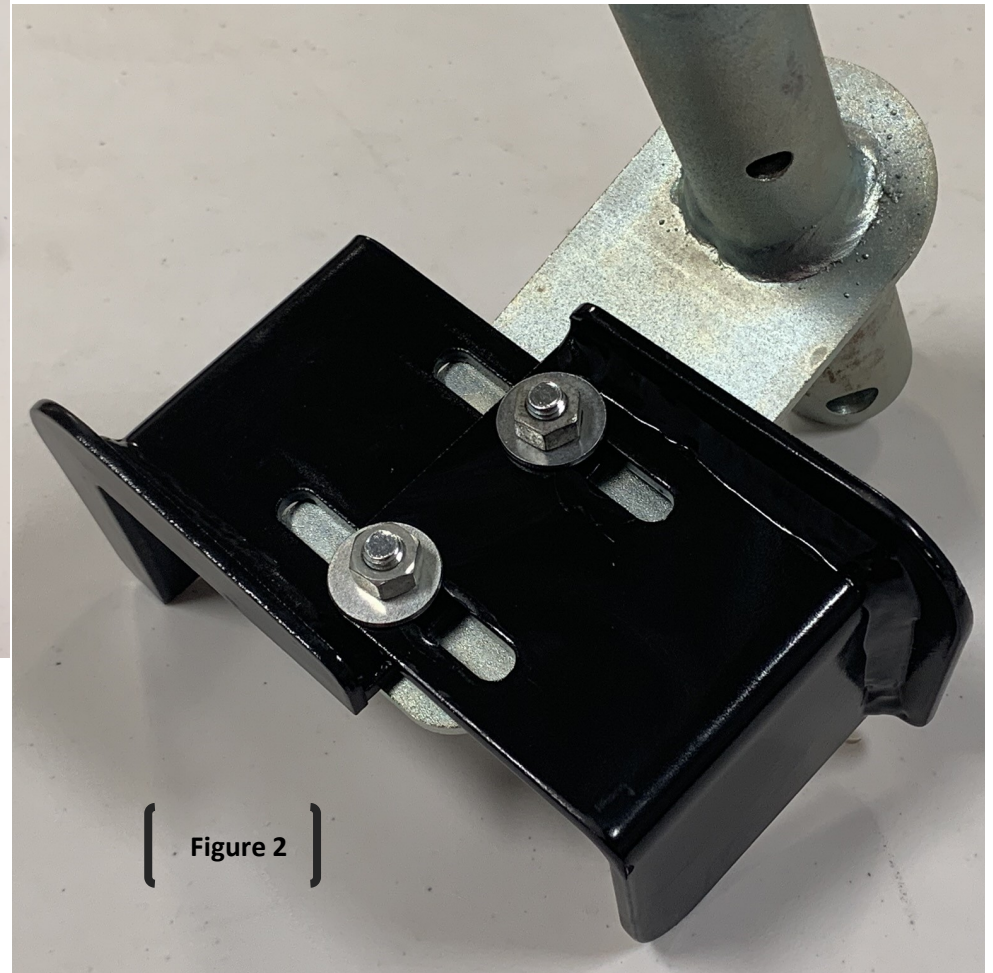


Figure 2

# Kit Installation

## Refer to Figures 3 & 4

3. With the lower arms raised completely, slide the orientation arm through the right arm ball and allow the clamps to envelope the top and bottom.
4. Keep the arm in place by adding two SAE washers (LANFOEM0), a rubber washer (LANSP226) and lynch pin (RED21940) as shown.



# Kit Installation

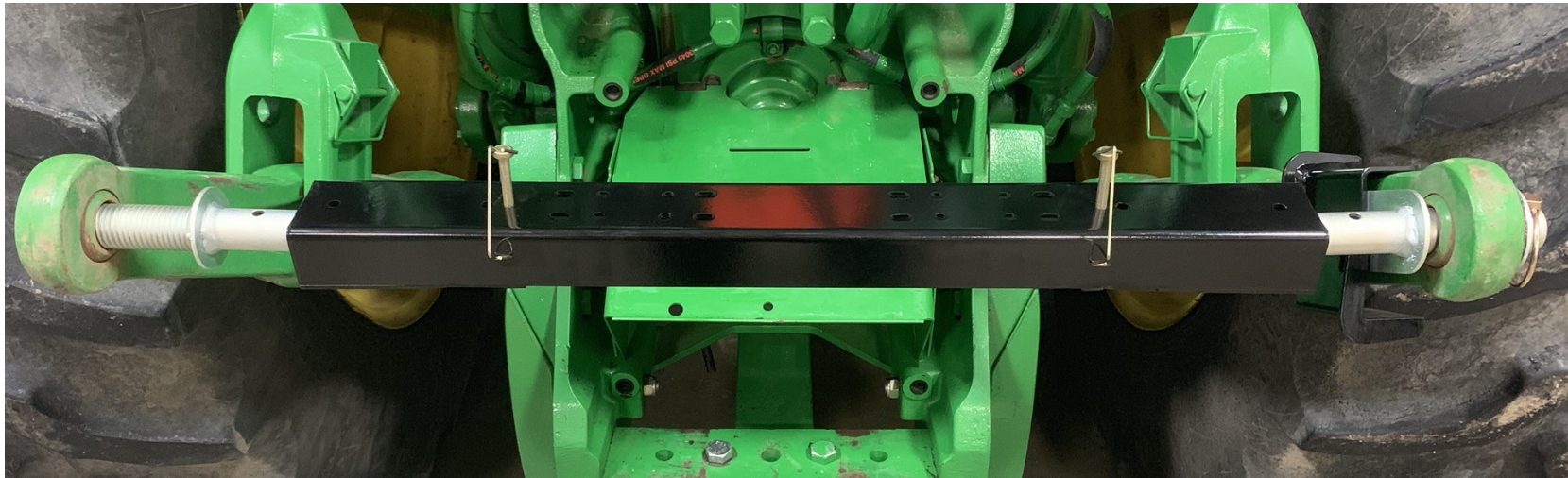


Figure 5

## Refer to Figures 5 & 6

5. Slide the threaded arm (LANSP206) into the main bar (LANPS205) and then slide that onto the orientation arm.
6. Extend them so the LANSP206 sits in the left tractor arm.
7. Secure the bar to the arms with the wire lock pins (LANHH21981). **Note: See the next page for a reference of which holes to use.**
8. Keep the arms together with two SAE washers (LANFOEM0), a rubber washer (LANSP226) and the 1-1/8" wing nut (LANSP208) as shown.

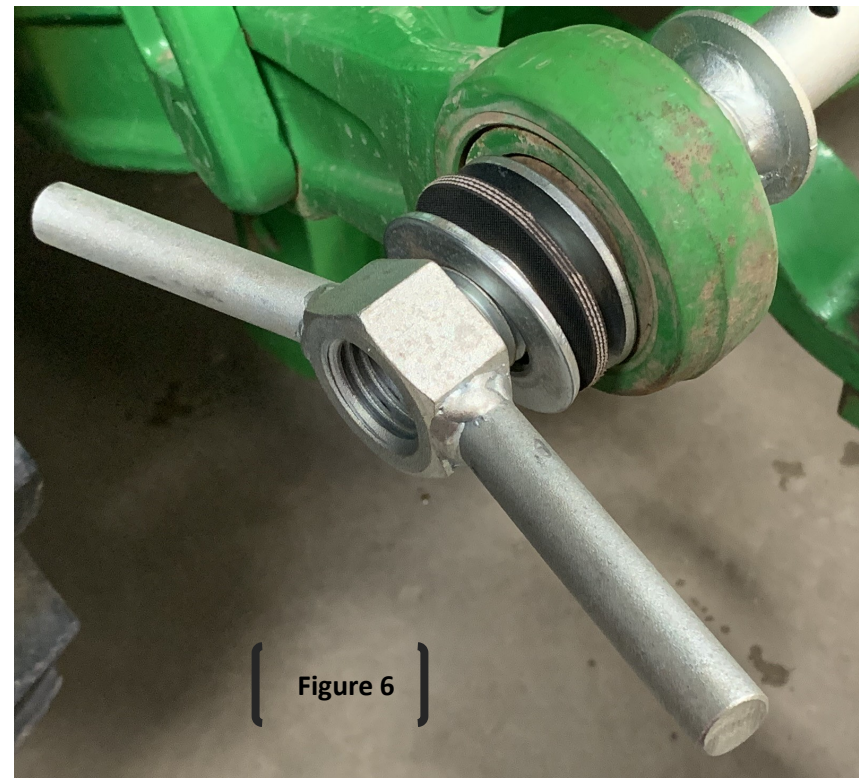
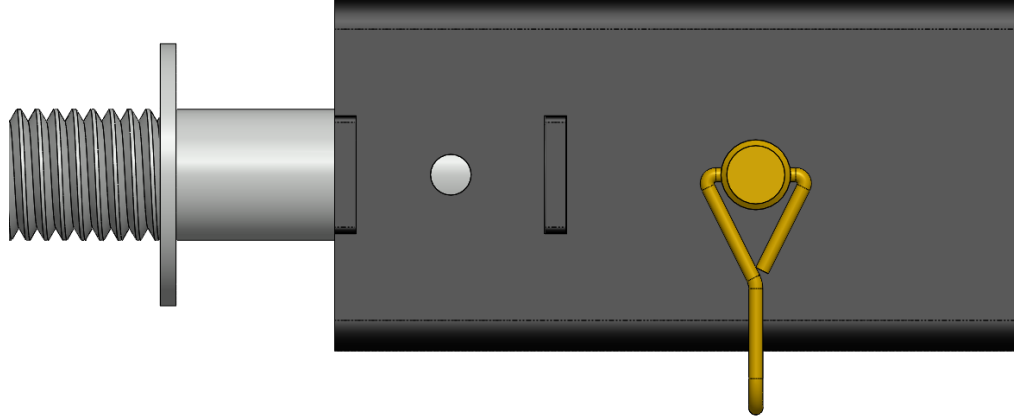


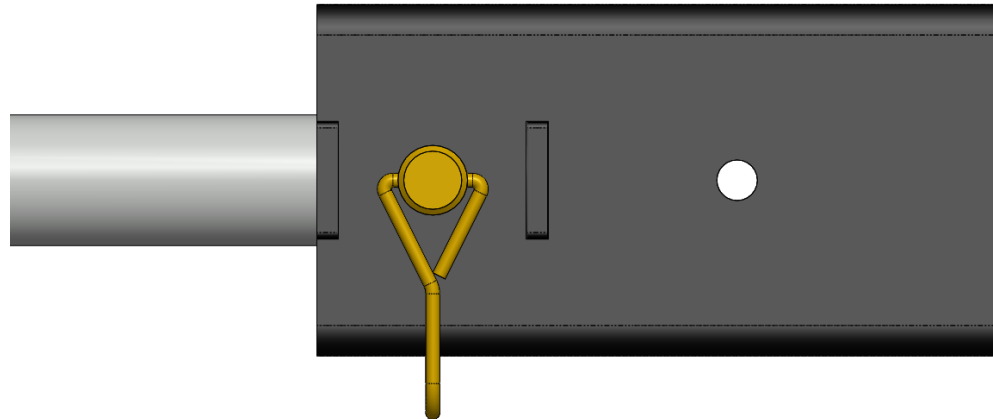
Figure 6

# Kit Installation

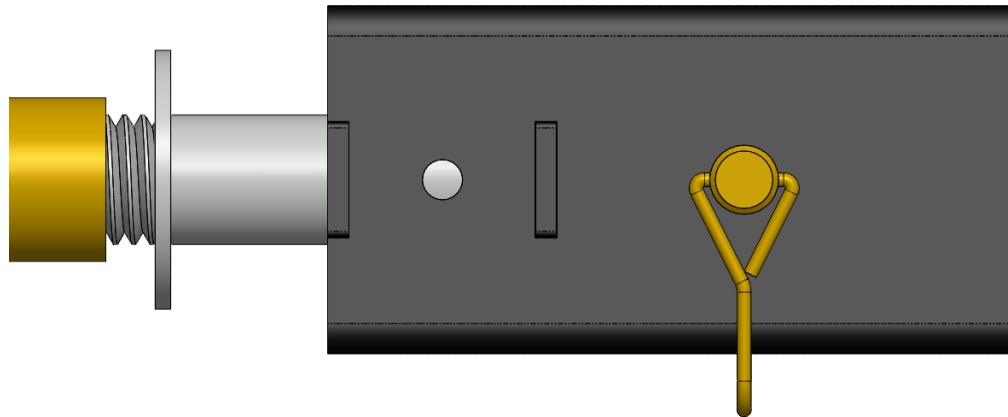
( Category 2 )



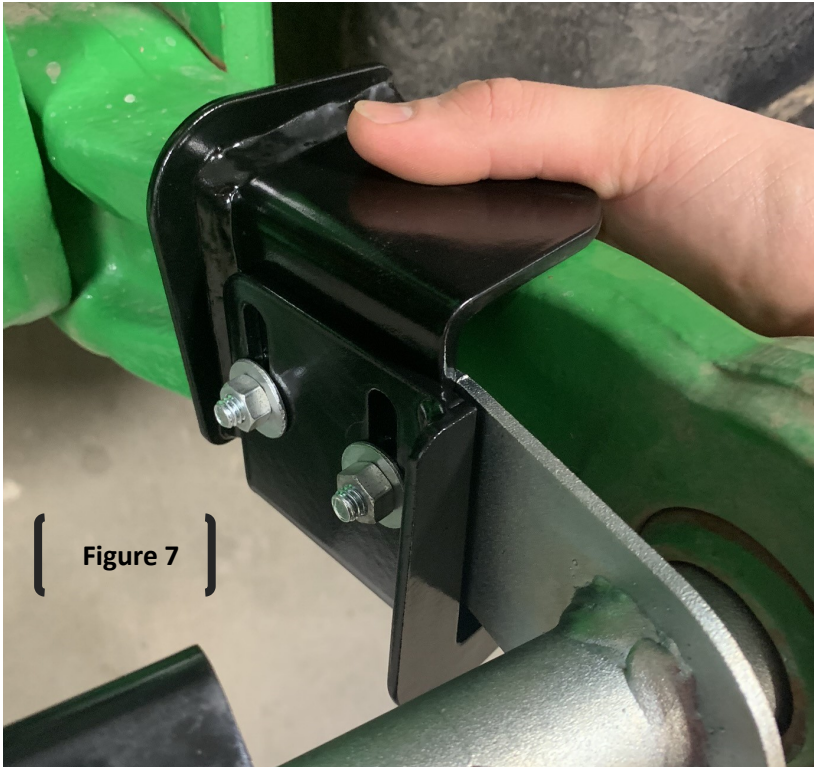
( Category 3 )



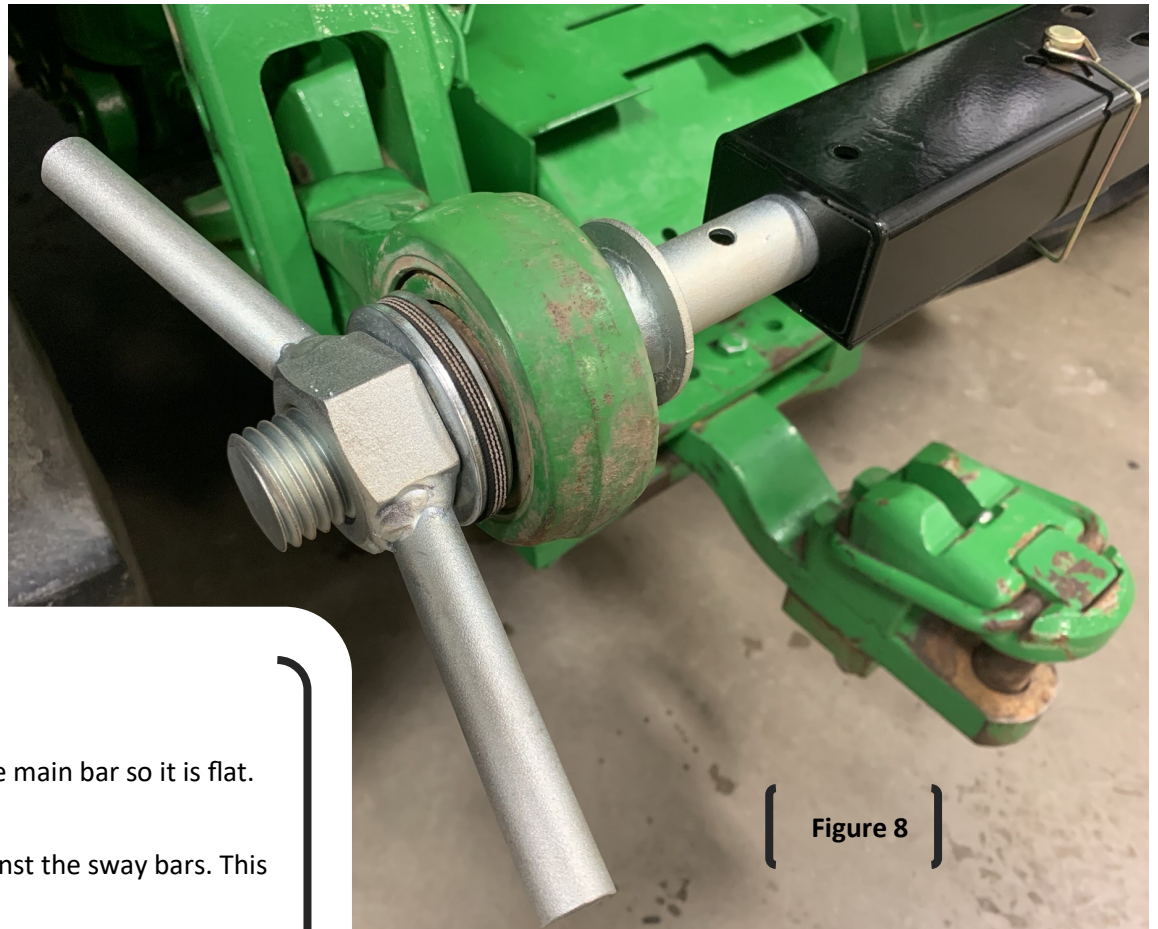
( Category 3N )



# Kit Installation



For further technical assistance,  
Call Lankota Inc. at:  
1-866-526-5682



## Refer to Figures 7 & 8

9. With the 3-point arms at the operating height, orient the main bar so it is flat.
10. Press the clamps against the arm and tighten the nuts.
11. Turn the wing nut, pulling together and locking them against the sway bars. This prevents them from banging around.
12. Install the desired hydraulic blocks using the instructions that comes with them.