

LANMS24524

Installation Instructions

Lankota Mud Scraper kit for John Deere X9 Combine

LANKOTA®

**270 West Park Avenue
Huron, SD 57350
866-526-5682**

Numerical Parts List

Part Numbers	Description	Qty
LANMS110	Mud Stinger	2
LANMSX900	Hanger Bracket RH	1
LANMSX900M	Hanger Bracket LH	1
LANMSX903	Tractor Mount Spacer Bushing - 2-1/4" Long	4
LANMSX904	Tractor Mount Spacer Bushing - 2-3/4" Long	4
LANMS130	Joining Bracket	1
LANMS140	Mounting Plate	2
LANMSB88G	88" Mounting Bar	2
LAN2600UBOLT	5/8" x 4" U-Bolt	8
LANF724K	5/8" x 6" Carriage Bolt	8
LAN690830	5/8" Serrated Flange Nut	32
LANFWS57	SAE Flat Washer - 5/8"	8
LANFFHJH	5/8"-11 X 4-1/4" Gr 8 Hex Bolt	8
RED-TRC-TAPE	48" Strip of Abrasive Tape	1

Pictorial Parts List

				
LANMS110 (2)	LANMSX900 (1)	LANMSX900M (1)	LANMSX903 (4)	LANMSX904 (4)
				
LANMS130 (1)	LANMS140 (2)	LANMSB88G (2)	LAN2600UBOLT (8)	LANF724K(8)
				
LAN690830 (32)	LANFWS57 (8)	LANFFHJH (8)	RED-TRC-TAPE (48'')	

Kit Installation

Preparation

1. Park the combine on a flat level surface. Set the parking brake on the combine. Turn off the combine engine and remove the key.

Refer to Figure 1

2. Loosen and remove the nuts and bolts shown from one side of the combine (Front and back).
3. Replace with the 5/8" x 4-1/4" bolts, (LANFFHJH) 5/8" flat washer (LANFWS57) and 5/8" flange nuts (LAN690830). Leave the nuts off.

Refer to Figure 2

4. Be sure to use spacer bushings in correct location. (LANMSX903 Right side front and left side rear locations. LANMSX904 Right side rear and left side front.)
5. Hold the hanger bracket up (LANMSX900 & LANMSX900M) and install and tighten the new nuts while using spacers between tractor mount and Mud Scraper mount, securing the bracket in place.
6. Repeat steps 1-3 on the other side of the combine.

Figure 1



Figure 2



Kit Installation

Refer to Figures 3 & 4

7. Lay the (2) tubes (LANMSB88G) on a flat surface and press the open ends together.
8. Hook (2) LAN2600UBOLTS around each tubes.
9. Set the joining bracket (LANMS130) on the tubes and run the U-Bolts through the holes.
10. Secure the joining bracket with 5/8" nuts (LAN690830) and tighten

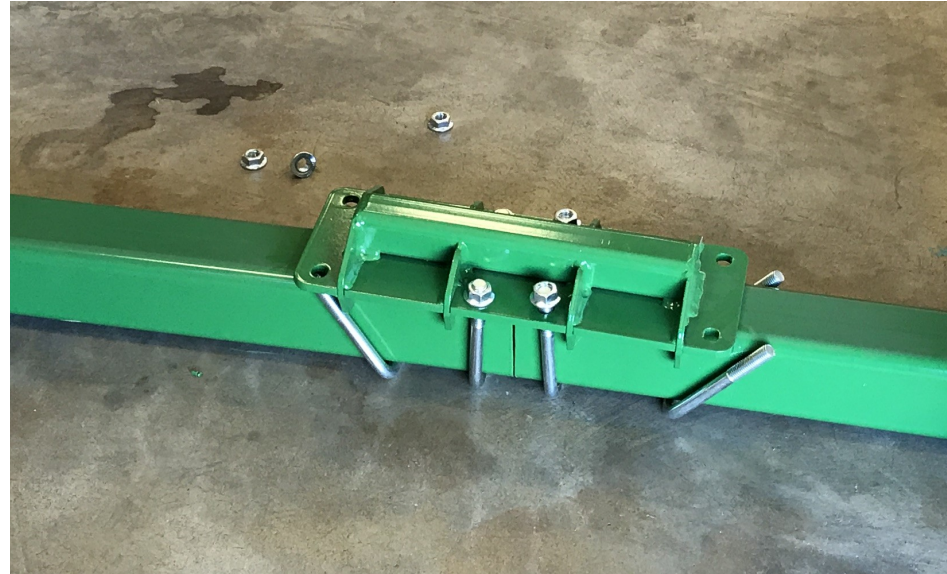


Figure 3



Figure 4

Kit Installation

Refer to Figures 5 & 6

11. To prepare for hanging the bars (LANMSB88G) , put (2) carriage bolts (LANF724K) through the hanger brackets and then hang a mounting plate (LANMS140) on the bolts with a nut (LAN690830) on each.
12. Slide the paired tubes under the combine. Lift one end and prop up securely.
Note: the joining bracket (LANMS130) goes on the bottom of the bars.
13. Lift opposite end and set into the mounting bracket.
14. Insert the other (2) carriage bolts and nuts through the hanger and mounting brackets. Leave them loose.
15. Repeat steps 9 and 10 on the remaining side.
16. Slide the bars to the desired position making sure the bars are centered and parallel to the axles.



Figure 5

Figure 6

Kit Installation

Refer to Figure 7

17. Set a stinger (LANMS110) on the tube on a side. Determine what set of holes will put the stinger end in the desired location.
18. Insert a LAN2600UBOLT into a set of holes and secure with a flange nut (LAN690830).
19. Align and tighten, then repeat on the other side.
20. Cut the abrasive strip into lengths that will fit between the combine and the stinger.
21. Remove backing from the abrasive strips and adhere to the top of the bars.

Figure 7

**For technical assistance,
Call Lankota Inc. at:
1-866-526-5682**

