

LANMF19259

Installation Instructions

Fender Lift Kit for 4920, 4930, 4940 & R-Series John Deere Sprayers with Narrow Fenders

(Set of 4)

(Not for R4023, 4xxR or 6xxR sprayers)

LANKOTA[®]

270 West Park Avenue

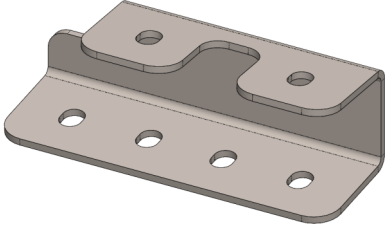
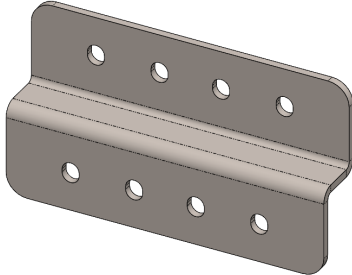


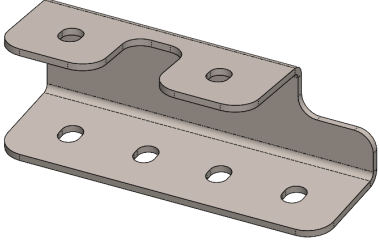



Huron, SD 57350

866-526-5682

Numerical Parts List

Part Numbers	Description	Qty
LANMF21L	Fender Top Mount, Left	2
LANMF21R	Fender Top Mount, Right	2
LANMF22	Fender Lower Mount	4
LANF06FP	3/8" x 1.25" SS Hex bolt	24
LANF091A	3/8" SS Hex Nut	24
LANF05XZ	3/8" SS Lock Washer	24
LANF05SQ	3/8" SS Flat Washer	48
LAN19M7785	M10 x 25mm Flanged Hex Bolt	8

Pictorial Parts List

			
LANMF21L (2)	LANMF22 (4)	LANF06FP (24)	LANF091A (24)
			
LANMF21R (2)	LANF05XZ (24)	LANF05SQ (48)	LAN19M7785 (8)

Kit Installation



Figure 1



Figure 2

Refer to Figures 1 & 2

1. The mounts have set of four holes allows you to offset the fenders (1.5") to cover more of the floater tires. Look at the fenders and decide if you wish to offset or keep in factory position.
2. Remove a fender from its mounts.

Refer to Figure 3

3. On the upper mounting arm, install the top extender (LANMF21L or R) with the M10 x 25mm bolts (LAN19M7785). Slide the bracket forward and tighten.

**Using thread locking compound here is recommended.
The bracket opens towards the front of the sprayer.**

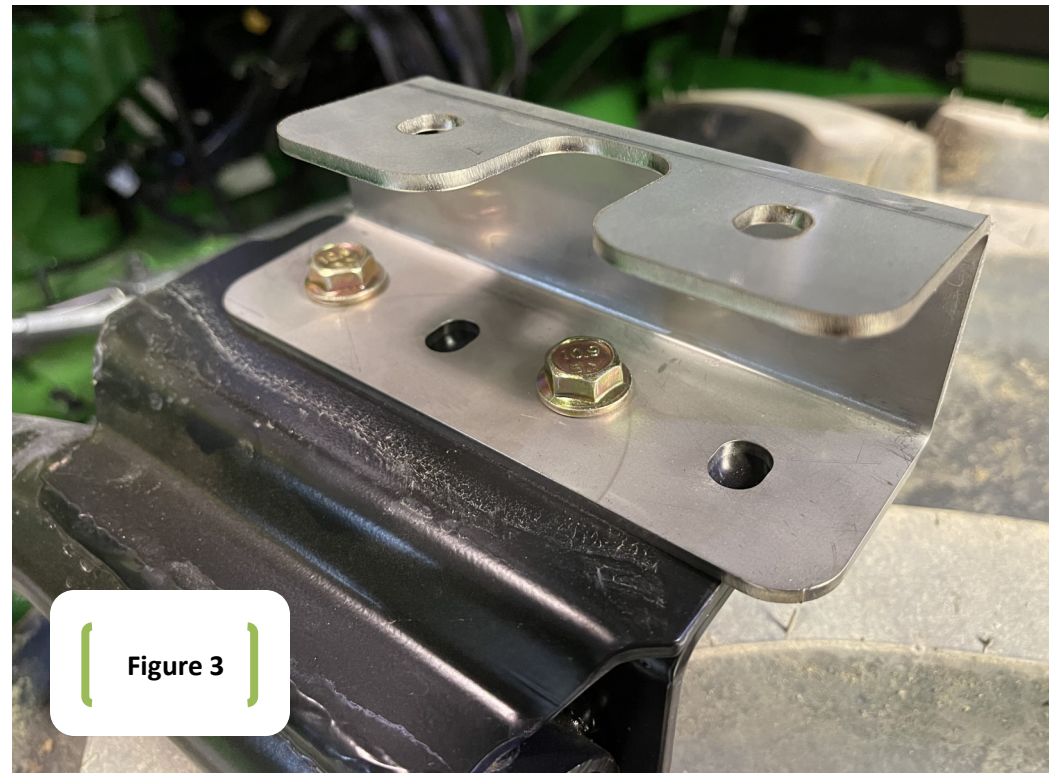


Figure 3

Kit Installation

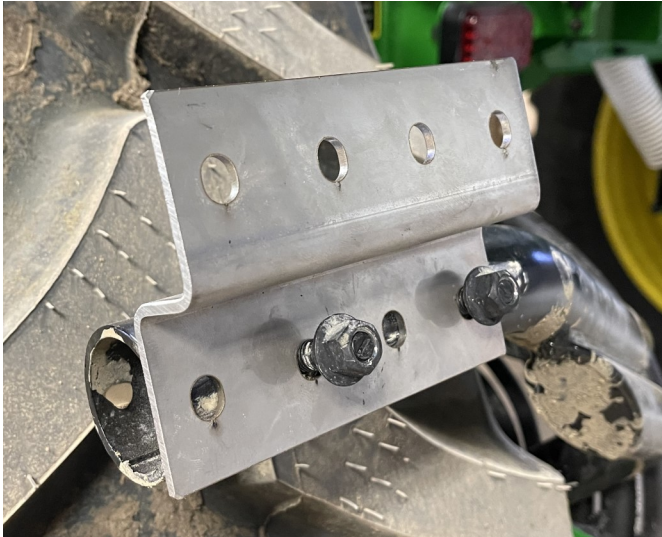


Figure 4

Refer to Figure 4

4. Attach the lower bracket (LANMF22) to the lower mounting arm with (2) 3/8" bolts, lock washers, nuts and (4) flat washers or the original hardware & tighten.

Note: Lankota recommends using thread locking compound to further prevent the hardware from loosening.

Refer to Figures 5—7

5. Reinstall the fender. Secure it in place with 3/8" bolts, lock washers, nuts and flat washers to the new extender brackets and tighten (**more thread-locker**).
6. Repeat all steps on the rest of the wheels.



Figure 5



Figure 6



Figure 7