

# **LANHXE28172**

## **Installation Instructions**

**JD Corn Head Prop Rod Storage Holder**

**Fits John Deere 606, 608 & 612 Series Corn Heads. (S.N. -745100)**

# **LANKOTA<sup>®</sup>**

**270 West Park Avenue**

**Huron, SD 57350**

**866-526-5682**

# Numerical Parts List

Part Numbers	Description	Qty
LANHXE281A	Prop Rod Bracket	1
LANMCHN40	112lb Neodymium Cup Magnet	1
LANFH1H2M	10-24 x 7/8" Flat Head Screw	1
LANFHN0MJ	#10 Rubber Washer	1
LANFODNU	Nyloc nut—10-24, Gr.5	1

# Pictorial Parts List



# Kit Installation

## Refer to Figures 1-3

1. Raise Corn Hood and remove factory storage brackets. Keep factory bolts to be re-used.
2. Take JD Corn Head Prop Rod Bracket and bolt magnet on ensuring that rubber washer (LANFHNOMJ) is installed between magnet and Prop Rod Bracket correctly. (Refer to Figure 2)
3. Once all magnets and provided hardware are installed, proceed to bolt on JD Corn Head Prop Rod Storage Holder assembly (LANHXE28172) re-using factory bolts.

Figure 1

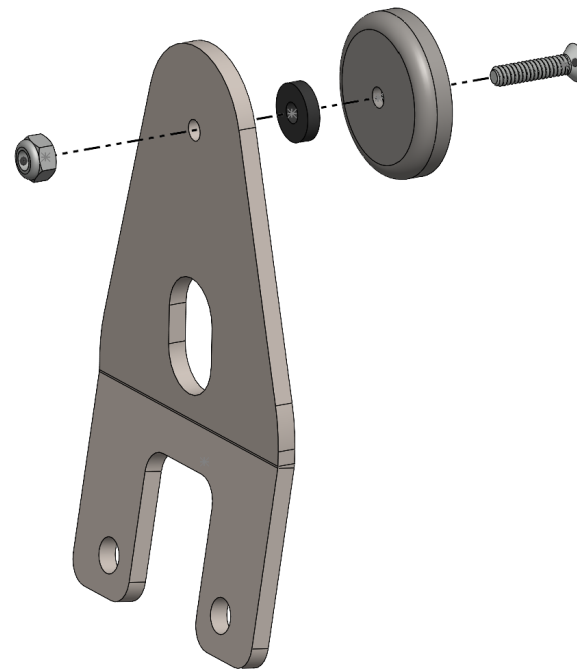


Figure 2

Figure 3



For further technical assistance,

Call Lankota Inc. at:

1-866-526-5682