

LANGPS14251

Installation Instructions

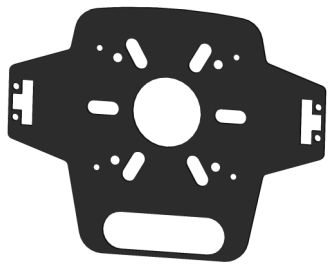
Lankota GPS Adapter; Trimble GPS Globe Mount to John Deere Globe

LANKOTA[®]

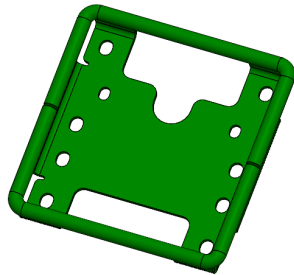
**270 West Park Avenue
Huron, SD 57350
866-526-5682**

Numerical Parts List

Part Numbers	Description	Qty
LANGPS142A	Trimble GPS Adaptor Plate to Starfire Deluxe Shroud Mount	1
LANGPS8119	Starfire Deluxe Shroud Mount	1
LAN9241K112	Neoprene Vibration Damping Mount	4
LANF91294A280	Flat Head Screw M8—1.25mm, 12mm Long	4
LAN14M7298	Serrated Flange nut, M8—1.25	4



LANGPS142A (1)



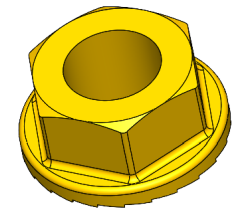
LANGPS8119 (1)



LAN9241K112 (4)



LANF91294A280 (4)



LAN14M7298 (4)

Kit Installation

Refer to Figures 1, 2 & 3

1. Loosely assemble (4) Vibration Damping Mounts (LAN9241K112) to Timble GPS Adaptor Plate (LANGPS142A) using (4) M8-1.25mm Serrated Flange nuts (LAN14M7298).
2. Take (4) Flat Head Screws (LANF91294A280) and bolt through Timble GPS Adaptor Plate (LANGPS142A) ensuring that tapered surface on hardware are installed correctly and true to machined tapered surface on Adaptor plate.
3. Tighten Hardware.

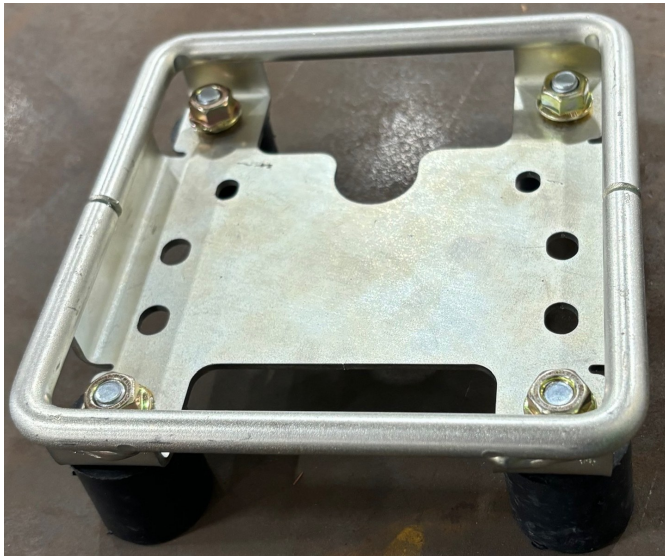
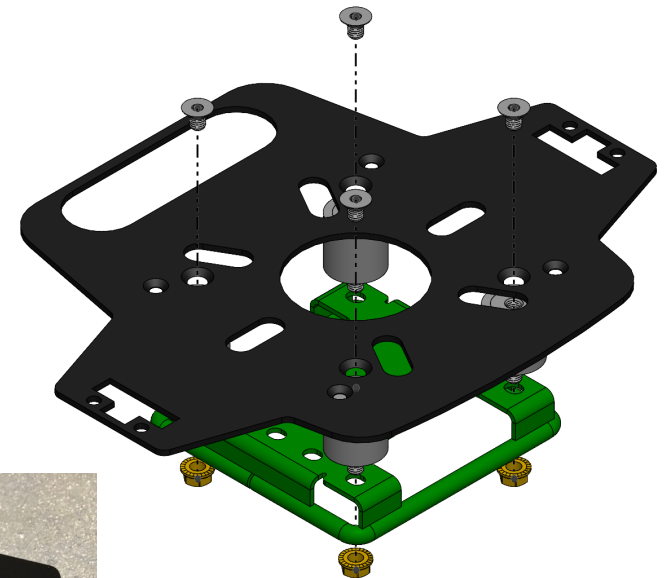


Figure 1

Figure 3

Figure 2



Kit Installation

Refer to Figure 4, 5 & 6

4. Lastly connect Trimble GPS Globe Mount to roof of Windrower using factory mounting plate and latch to hold in place.

Figure 4

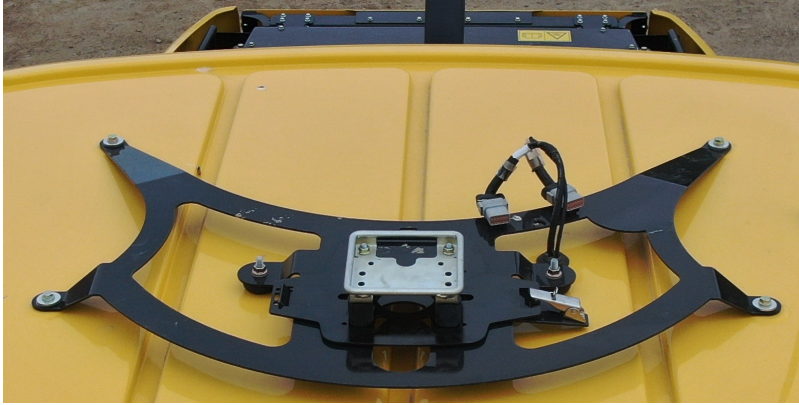


Figure 5



Figure 6



For further technical assistance,

Call Lankota Inc. at:

1-866-526-5682