

LANGB1000

Installation Instructions

Lankota Gang Buster for Removing Gangs of Row Units from John Deere Air Seeders

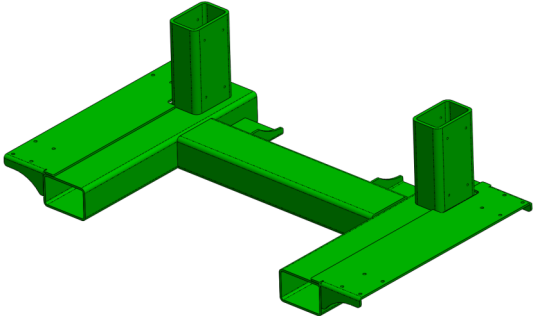
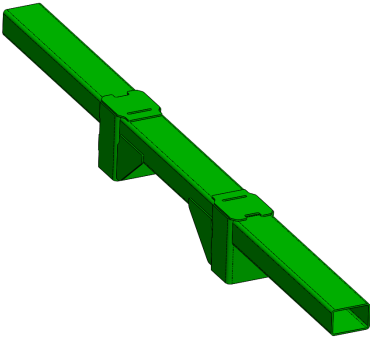
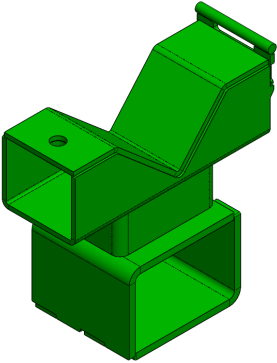
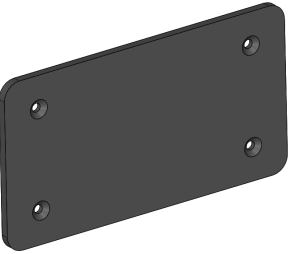

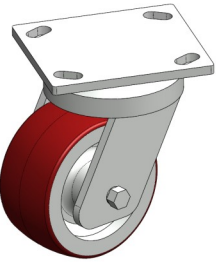

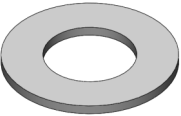

LANKOTA[®]

**270 West Park Avenue
Huron, SD 57350
866-526-5682**

Numerical Parts List

Part Numbers	Description	Quantity
LANAST50	Toolbar Base	1
LANAST60	Toolbar Lift Weldment	1
LANAST70	Gang Tube Rest Saddle	2
LANAST80	Gang Saddle Clamp	2
LANAST59	Plastic Slide Pad	4
LAN69472	4 Ton Bottle Jack with Handles	2
LANC3804117	4" Swivel Castor	4
REDB807	3/4"-10 x 1.75" Gr 5 Hex Bolt	2
LAN18A00	3/8"-16 x 1" Gr 5 Hex Bolt	16
LANFWS53	3/8" SAE Flat Washer	16
REDNAF3	3/8"-16 Gr 5 Hex Nut	16

Pictorial Parts List

 <p>LANAST50 (1)</p>	 <p>LANAST60 (1)</p>	 <p>LANAST70 (2)</p>	 <p>LANAST80 (2)</p>
 <p>LANAST59 (4)</p>	 <p>LAN69472 (2)</p>	 <p>LANC3804117 (4)</p>	
 <p>REDB807 (2)</p>	 <p>LAN18A00 (16)</p>	 <p>LANFWS53 (16)</p>	 <p>REDNAF3 (16)</p>

Preparation

1. **Attach desired air seeder to a tractor and put in park.**
2. **For a wing gang, make sure the air seeder is unfolded completely. For the center section, at least one wing needs to be folded up.**
3. **Raise the drill all the off the ground.**
4. **Raise all the gangs up.**
5. **Turn off the tractor engine and remove the key.**

**For further technical assistance,
Call Lankota Inc. at:
1-866-526-5682**

1. Removing a Gang

Refer to Figure 1

- 1) Lock all the gangs in the upmost position by inserting bolts in the shown location.

Refer to Figures 2 & 3

- 2) Mark/Identify which seed tube goes to which row unit.
- 3) Disconnect the seed tubes from the row units and set them away from the gang area.

If removing a WING gang, proceed to next page.

If removing a CENTER gang, go to page 11.

Figure 1

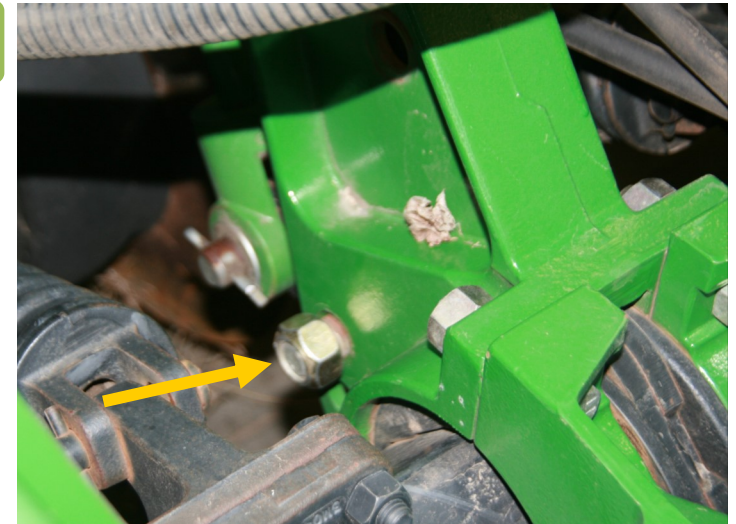


Figure 2



Figure 3



1. Removing a Wing Gang

Refer to Figures 4 & 6

- 4) Disconnect the hydraulic hoses from the cylinder of the gang to be removed. (Only on Wings)
- 5) Cap both ends of the cylinder and the hoses to keep them clean.

Refer to Figure 5

- 6) Unfasten the U-bolts on both ends of the gang that connect it to the frame. Do not remove the U-bolts.

Figure 4



Figure 5

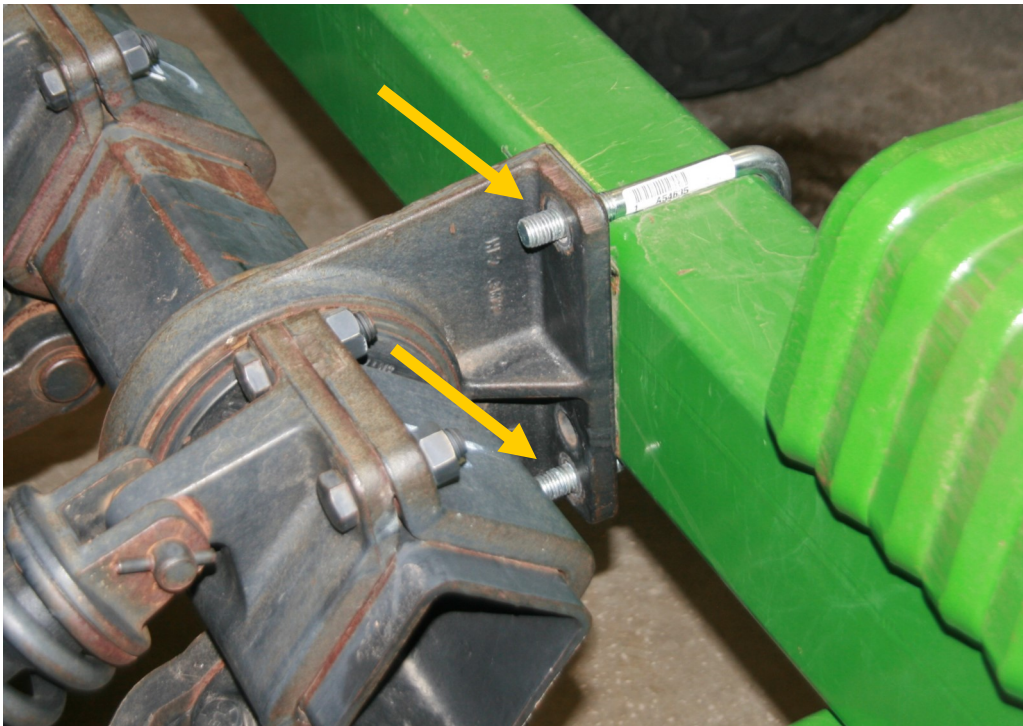


Figure 6



1. Removing a Wing Gang

Refer to Figure 7

- 7) Raise the wing, either with a bottle jack or by the tractor hydraulics. (Jack is recommended)

Refer to Figure 8

- 8) Set the Gang Buster under the gang, with tube clamps set aside. Situate it so it sits as close to the center of the gang as possible.

Warning: Failure to put the legs of the Gang Buster under the row units will result in the unit falling over and possible bodily harm.

Note: The bar saddles can be rotated and slid to the correct orientation.

Figure 7



Figure 8



1. Removing a Wing Gang

Refer to Figure 9

- 9) Lower the wing back down. If needed, jack the Gang Buster up until it meets the gang tube using it's bottle jacks.

Refer to Figure 10

- 10) After the tube and saddles meet, insert and fasten the saddle clamps. Tighten securely.
- 11) Remove the U-bolts from the end of the gang.

Figure 9



Figure 10

1. Removing a Wing Gang

Refer to Figure 11

12) Remove the 5 bolts that connect the center of the gang to the wing frame.

The gang is now hanging completely on the Gang Buster.

Refer to Figure 12

13) Raise the wing with the tractor hydraulics.

Note: It is possible for the seed tubes to fall/move into the space between the wing frame and the wing fold stop and could result in damaged seed tubes. Have someone watching them as you fold the wing.

Figure 11



Figure 12



1. Removing a Wing Gang

Figure 13



Refer to Figures 13 - 15

14) The wing gang is now free to move around by hand or by forklift.

Figure 15



Figure 14

2. Removing a Center Gang

Refer to Figure 16

- 4) Unfasten the bolts on both ends of the gang that connect it to the frame. Do not remove the bolts.

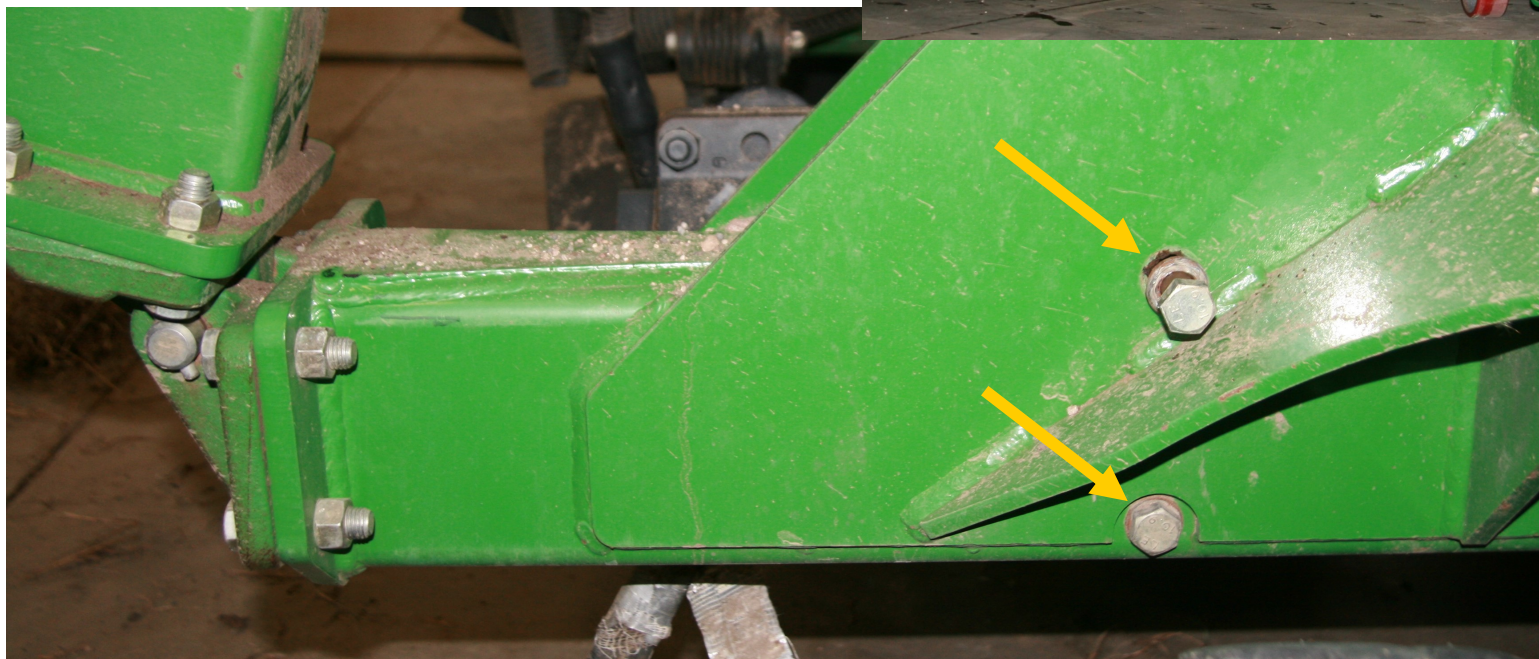
Refer to Figure 17

- 5) Set the Gang Buster under the center of the designated gang. It may be necessary to remove the tube saddles before setting it and then replace them. (side-to-side motion may also be necessary)



Figure 17

Figure 16



2. Removing a Center Gang

Refer to Figure 18

- 6) Jack the Gang Buster up using it's bottle jacks, until it meets the gang tube.

Refer to Figure 19

- 7) After the tube and saddles meet, insert and fasten the saddle clamps. Tighten securely.
- 8) Remove the bolts from the end of the gang.

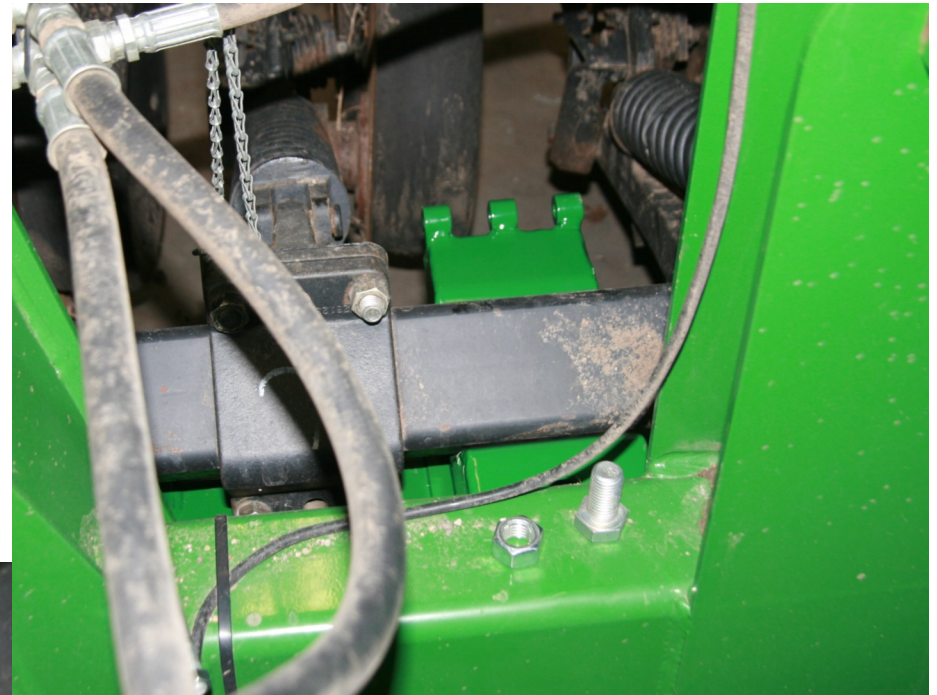


Figure 18



Figure 19

2. Removing a Center Gang

Refer to Figures 20 & 21

- 9) Remove the 5 bolts that connect the center of the gang to the main frame.
 - 10) Remove the 4 **bolts** attaching the cylinder to the gang and the **pin** in the bottom of the cylinder.
- The gang is now hanging completely on the Gang Buster.



Figure 20

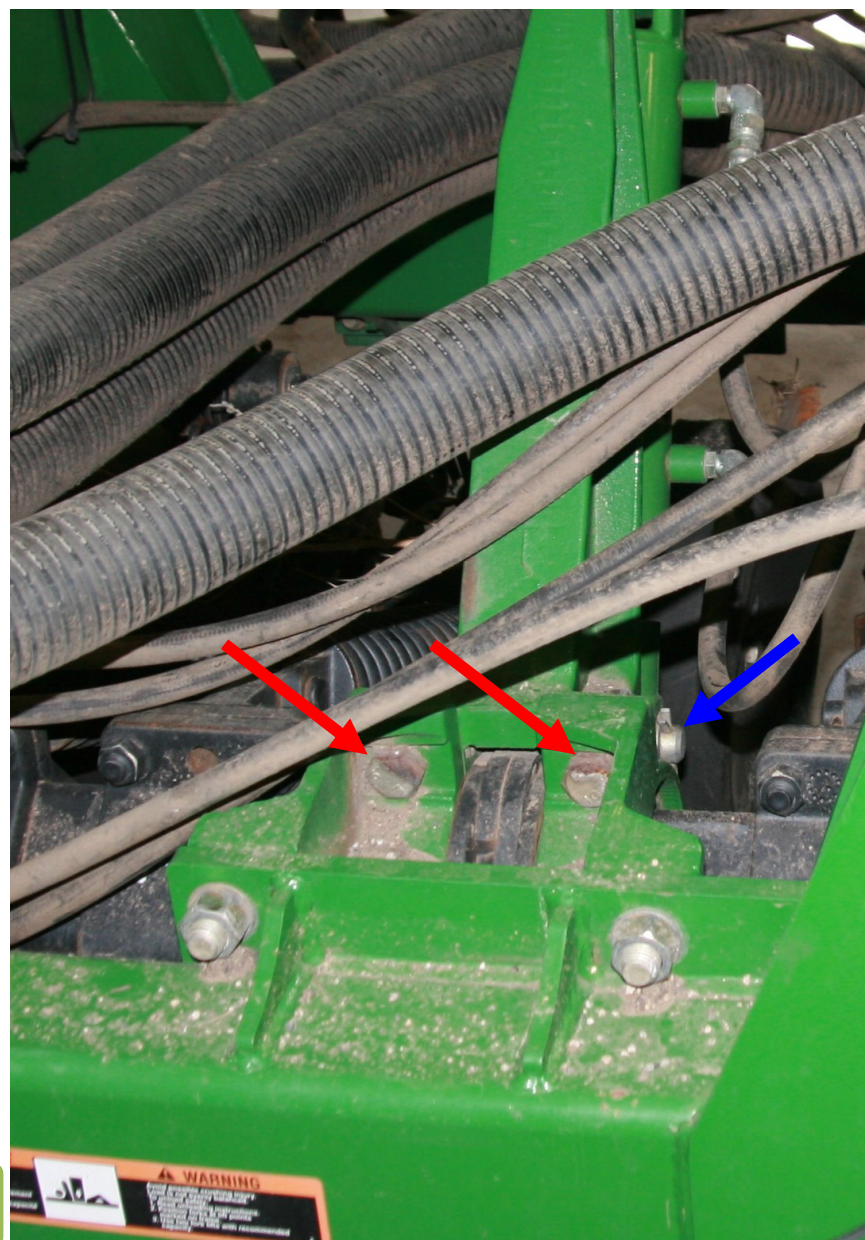


Figure 21

2. Removing a Center Gang

Refer to Figure 22

- 11) Set the cylinder and it's mount on the frame of the air seeder, out of the way.

Refer to Figure 23

- 12) Pull the center gang out from under the drill.

Figure 22



Figure 23



2. Removing a Center Gang

Figure 24



Refer to Figures 24 & 25

13) The wing gang is now free to move around by hand or by forklift.

Figure 25

