

LANFSR24581

Installation Instructions

Tool to Assist in Unplugging the Feed Accelerator on JD Rotor Combines

LANKOTA[®]

270 West Park Avenue
Huron, SD 57350
866-526-5682

Numerical Parts List

Part Numbers	Description	Qty
LANFSRX901	Pulley Engaging Tool	1
LANFSR251	Handle, Straight	1
LANFSR252	Handle, Bent	1
LANFSR10-011	Lockout Tag for FSR10	1
LAN44302	Zip Ties	1
LANFC507	1/2" x 1.75" Gr 8 Hex Bolt	2
LANFWS55	1/2" SAE Flat Washer	4
RED1F30	1/2" Top Lock Nut	2

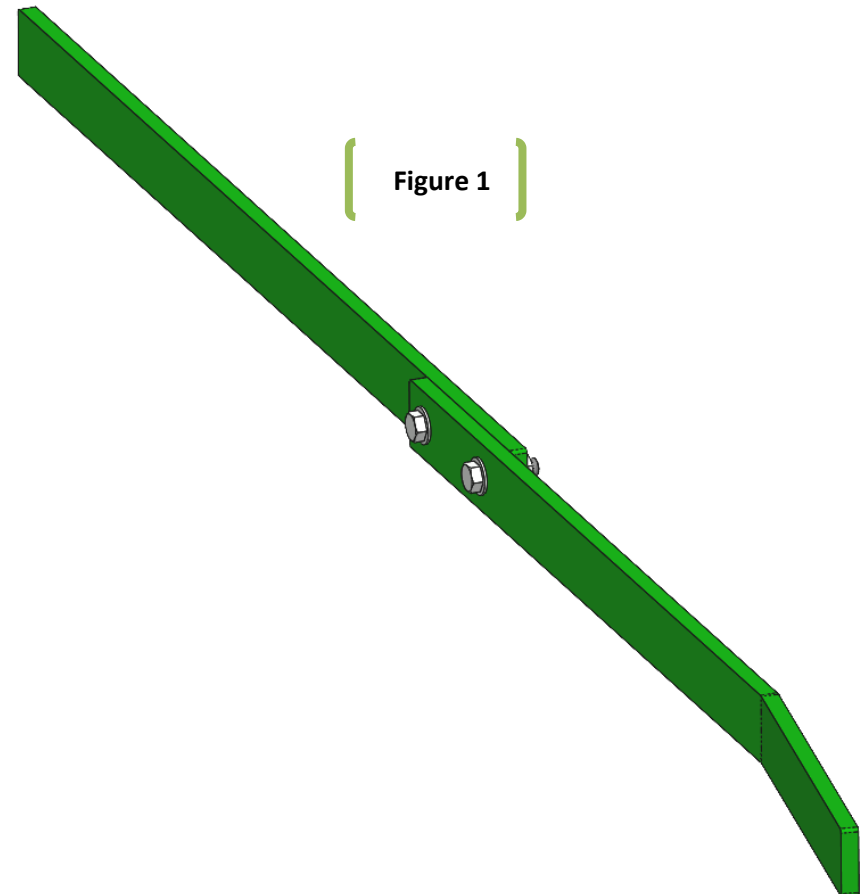
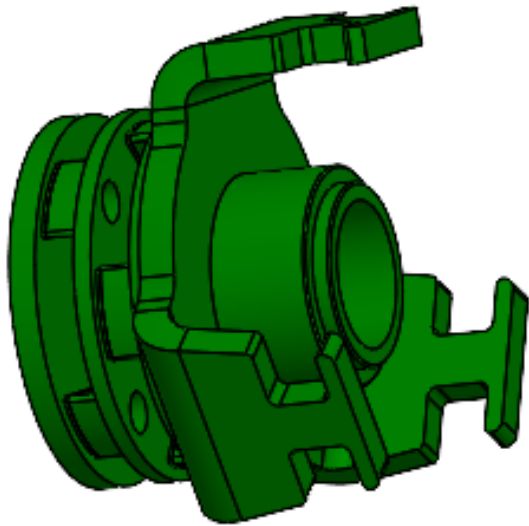
Pictorial Parts List

 <p>LANFSRX901 (1)</p>	 <p>LANFSR251(1)</p>	 <p>LANFSR252(1)</p>	 <p>LANFSR10-011 (1)</p>	 <p>LAN44302 (1)</p>
	 <p>LANFC507 (2)</p>	 <p>LANFWS55 (4)</p>	 <p>RED1F30 (2)</p>	

Kit Assembly

Refer to Figures 1

1. Join the two handle halves together with the 1/2" hardware.



Operation

Refer to Figures 3 & 4

1. Open concave completely. Set feeder house to desired location. Shut off engine and remove key. Push feeder house emergency stop button located on left side of feeder house.
2. Open rock trap door and remove as much material as possible.
3. Remove panel on top of feeder house just in front of feed accelerator. Remove as much material as possible.
4. Remove right hand shield covering feed accelerator drive pulley.
5. Install FSR tool onto pulley. Insert breaker bar (LANSR10-008) into appropriate slots on wrench. Apply force to breaker bar to either reverse or forward slug through feed accelerator.
6. Remove, reinsert and repeat with bar as necessary to remove slug completely.
7. Remove wrench. Reinstall shield. Close rock trap. Return concave to operating setting.

Figure 3



Figure 4

