

# LANFF1430

## Installation Instructions

Lankota Front Fill Kit for 4730 & 4830 JD Sprayers

(Serial Number: 8001+)

**\*\*Does NOT work with underbody shields\*\***

# LANKOTA®

270 West Park Avenue  
Huron, SD 57350  
866-526-5682

# Numerical Parts List

<b>Part Numbers</b>	<b>Description</b>	<b>Qty</b>
LANFF301	Extended Side Fill Mount	1
LANFF302	Front Valve Mount	1
LANFF303	Purge Valve Mount	1
LANFF304	Hose Clamp Hanger (Short)	1
LANFF305	Hose Clamp Hanger (Long)	1
LANFF306	Hose Clamp Hanger (Magnetic)	1
LANFF307	Hose Clamp Hanger (Side)	1
LANHPXMT	3.5" Hose Band	4
LANMCHN40	112lb Neodymium Magnet	2
LANFH1H2M	#10 x 7/8" Flat Head Screw	2
LANFODNU	#10 Nyloc Nut	2
REDB504	1/2" x 1" Hex Bolt	2
LAN22000	1/2" Flat Washer	2
REDWL55	1/2" Lock Washer	2
LANFB103	1/4" x 3/4" Hex Bolt	3
REDWU51	1/4" Flat Washer	3
LANEJRN	1/4" Flanged Nyloc Nut	3
LANFB310	3/8" x 2.5" Hex Bolt	3
LAN18000	3/8" Flat Washer	13
LAN18A00	3/8" x 1" Hex Bolt	5
LAN1618000	3/8" Nyloc Nut	5
LANFOBIU	#10 x 3/8" Philips Pan Head Screw	2
LAN44302	Zip Tie	12
LAN2FA54-78	SPST Toggle Switch	1
CAB31503	Ring Terminal Connector	4
LANWDB16-2	16 AWG, 2 Strand Wire	16 ft
LANFFSTICKER	Front Switch Sticker	1

# Numerical Parts List

<b>Part Numbers</b>	<b>Description</b>	<b>Qty</b>
<b>LANFF2FK</b>	<b>Hose &amp; Fitting Kit</b>	<b>1</b>
MVS300CFFP	3" Flange Stubby Banjo Valve	1
M300TEE	3" Flange Tee	3
MCV300	3" Flange Poly Check Valve	1
M300BRB	3" Flange x Hose Barb	6
M300CPG90	3" Flange 90 Deg Elbow	3
M300CPG45	3" Flange 45 Deg Elbow	1
M300CPG12	3" Flange x 12"	1
M300BRB45	3" Flange x 3" Hose Barb, 45 Deg Elbow	2
M300PLG075	3" Flange Plug with 3/4" FPT Port	2
M300A	3" Male Coupler to 3" Flange	1
300CAP	3" Banjo Coupler Cap	1
---	3" Flange Clamp	16
---	3" Flange Gasket	16
---	3" T-Bolt Hose Clamp	10
---	3/4" Screw Hose Clamp	2
---	3/4" MPT Close Nipple (SS)	2
---	3/8" to 3/4" Reducer Bushing (SS)	1
---	3/8" SS Ball Valve with Panel Mounts	1
---	3/8" Air Line Swivel 90 Deg Elbow	4
---	3/8" Air Line Tee	1
---	3/8" Stem x 1/4" tube Reducer	1
---	1/2" MPT x 3/8" FPT bushing (plastic)	1
---	3/4" FPT Check Valve (SS)	2
---	3/4" Street 90 Deg Elbow (SS)	3
---	3/4" MPT to 3/4" Hose Barb (SS)	2
Hose1	3" Suction Hose	14 ft
Hose2	3/4" Spray Hose	11 ft
Hose3	3/8" Plastic Air Line	16 ft

# Pictorial Parts List

						
LANFF301 (1)	LANFF302 (1)	LANFF303 (1)	LANFF304 (1)	LANFF305 (1)	LANFF306 (1)	LANHPXMT (4)
						
LANFF307 (1)	LANMCHN40 (2)	LANH1H2M (2)	LANF0DNU (2)	REDB504 (2)	LAN22000 (2)	REDWL55 (2)
						
LANFB310 (3)	LANFB103 (3)	REDWU51 (3)	LANEJRN (3)	LAN2FA54-78 (1)	LANWDB16-2 (16ft)	CAB31503 (4)
						
LAN18000 (13)	LAN18A00 (5)	LAN1618000 (5)	LANFOBIU (2)	LAN44302 (12)	LANFFSTICKER (1)	

# Pictorial Parts List (LANFF2FK)

						
MVS300CFFP (1)	M300TEE (3)	MCV300 (1)	M300BRB (6)	M300CPG90 (3)	M300CPG45 (1)	M300CPG12 (1)
						
M300BRB45 (2)	M300PLG075 (2)	M300A (1)	300CAP (1)	3" Flange Clamp (16)	3" Flange Gasket (16)	3" T-Bolt Clamp (10)
						
3/4" hose Clamp (2)	3/4" MPT Nipple (2)	Reducer Bushing (1)	3/8" Ball Valve (1)	3/8" Air Elbow (4)	3/8" Air Tee (1)	3/8" x 1/4" Reducer (1)
						
Reducer Bushing (1)	3/4" Check Valve (2)	3/4" Street Elbow (3)	3/4" Hose Barb (2)	3" Suction Hose (14ft)	3/4" Spray Hose (11ft)	3/8" Air Hose (16ft)

# Preparation

1. Ensure the solution tank is completely empty.
2. Park the sprayer on a flat, level surface.
3. Set the parking brake on the sprayer.
4. Turn off the engine and remove the key.

# Kit Installation

Refer to Figures 1 & 2

1. Drill and tap the two pre-existing holes on the front, right side of the sprayer to 1/2"-13.



Figure 1



Figure 2

# Kit Installation

## Refer to Figures 3 & 4

2. Remove all the hardware (yellow) from the shown plate.
3. Disconnect the fill valve and 45 deg elbow from the strainer. Set aside for reinstall.
4. Remove and discard the short extension (red) from the Tee fitting and strainer.
5. Replace the bracket with the new LANFF301, use the removed hardware.

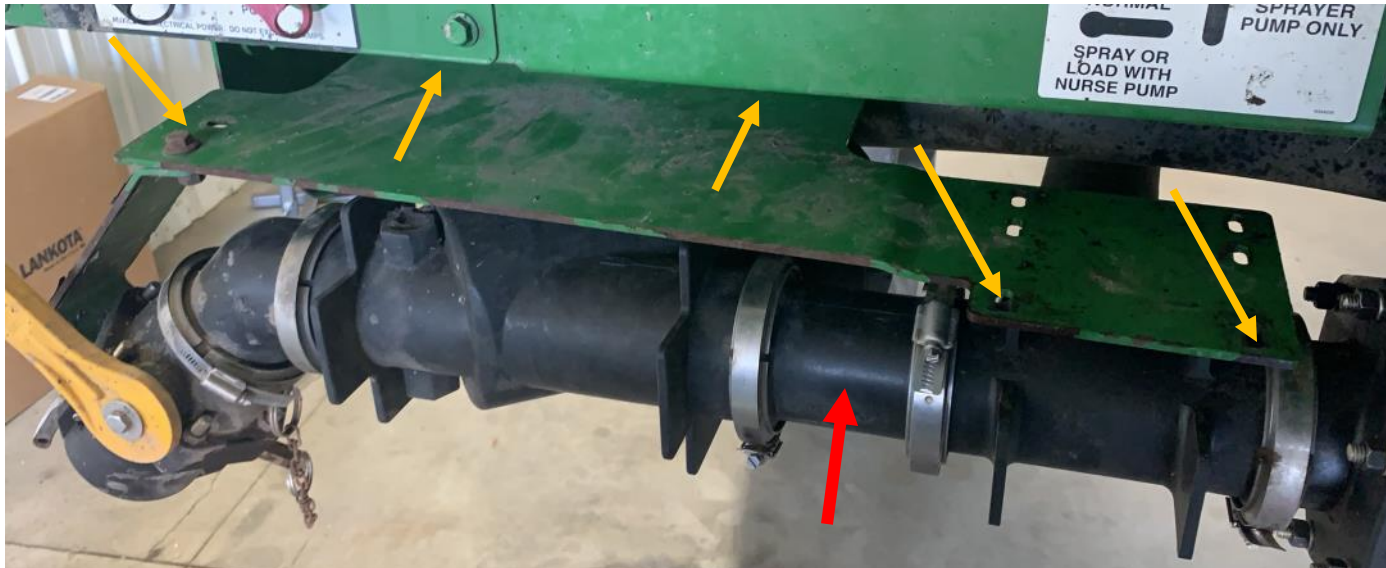


Figure 3



Figure 4

# Kit Installation



Figure 6



Figure 5

## Refer to Figures 5 & 6

6. Connect the strainer directly to the OEM tee fitting. Orient it towards the rear of the sprayer.
7. Add a new tee fitting (M300TEE) to the strainer and orient it forward and down at a 45 deg angle.
8. Reattach the 45 deg elbow and fill valve to the new tee. Use the original hardware to secure in place.



# Kit Installation

Figure 7



**Refer to Figures 7 & 8**

9. Install the front fill valve mount (LAN302) with the 1/2" bolts and washers through the fresh-tapped holes up front.

**Refer to Figures 9 & 10**

10. Install the front valve to the front mount by removing three of the valve housing bolts and replacing them with the provided 3/8" x 2.5" bolts (LANFB310) and the 3/8" washers (LAN18000).
11. Mount a tee to the inside and point it inwards. Mount the quick coupler on the end and clamp the cap on.

Figure 9



Figure 10



Figure 8

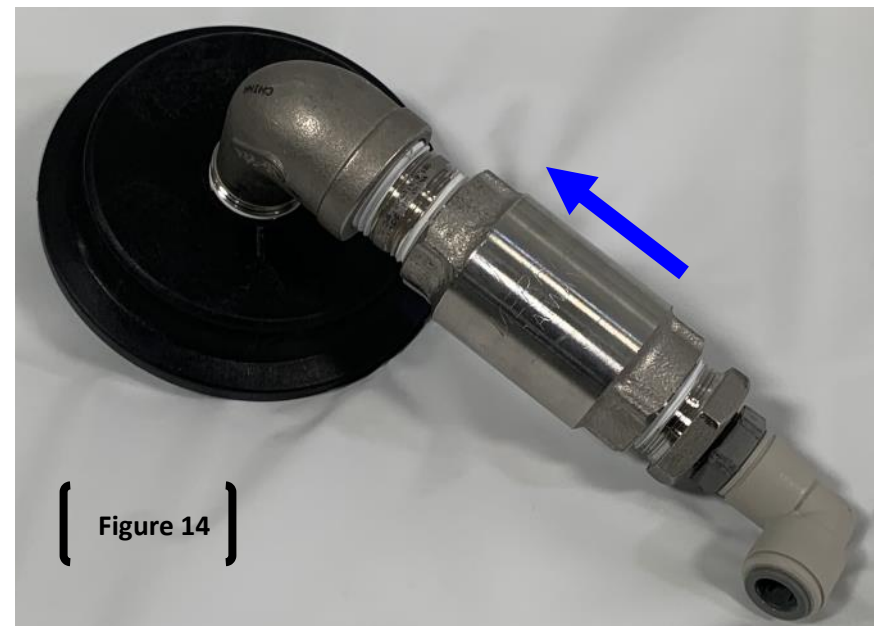
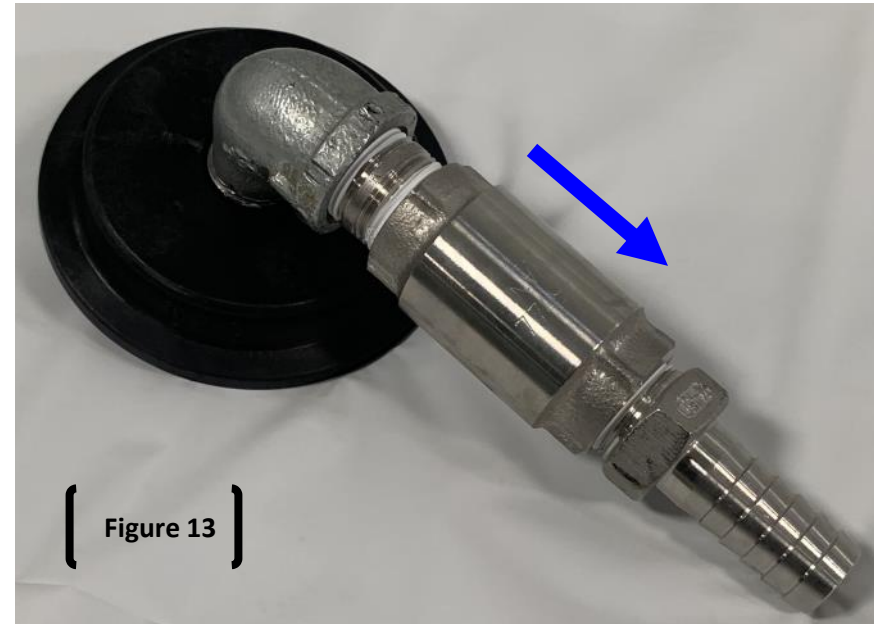
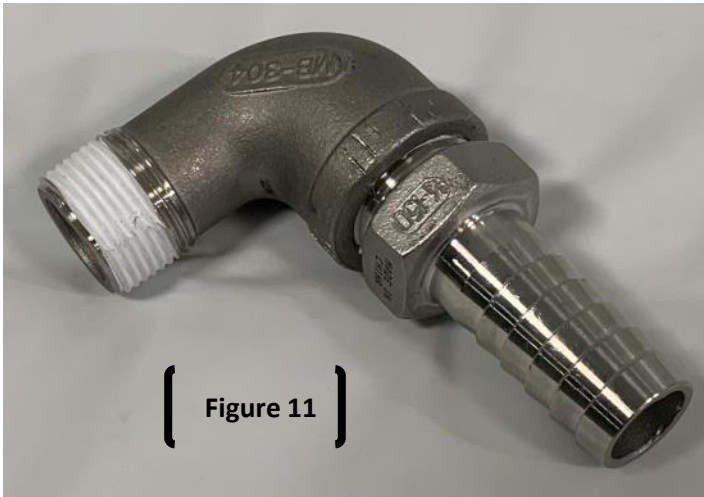


# Kit Installation

Refer to Figures 11-14

12. Assemble one of each of the shown assemblies and set them aside for later.

**Note: Arrows represent direction of check valve flow.**



# Kit Installation

## Refer to Figure 15

13. Remove the front 3/4" plug from the top of the tank.
14. Screw in the street elbow/hose barb assembly and orient as shown.

## Refer to Figure 16

15. Attach the 45 deg elbow (M300CPG45) and the 3" check valve (MCV300) to the tee by the side fill port.
16. Loosely attach a flanged hose barb (M300BRB) for measuring.

**Note:** Arrow represent direction of check valve flow.

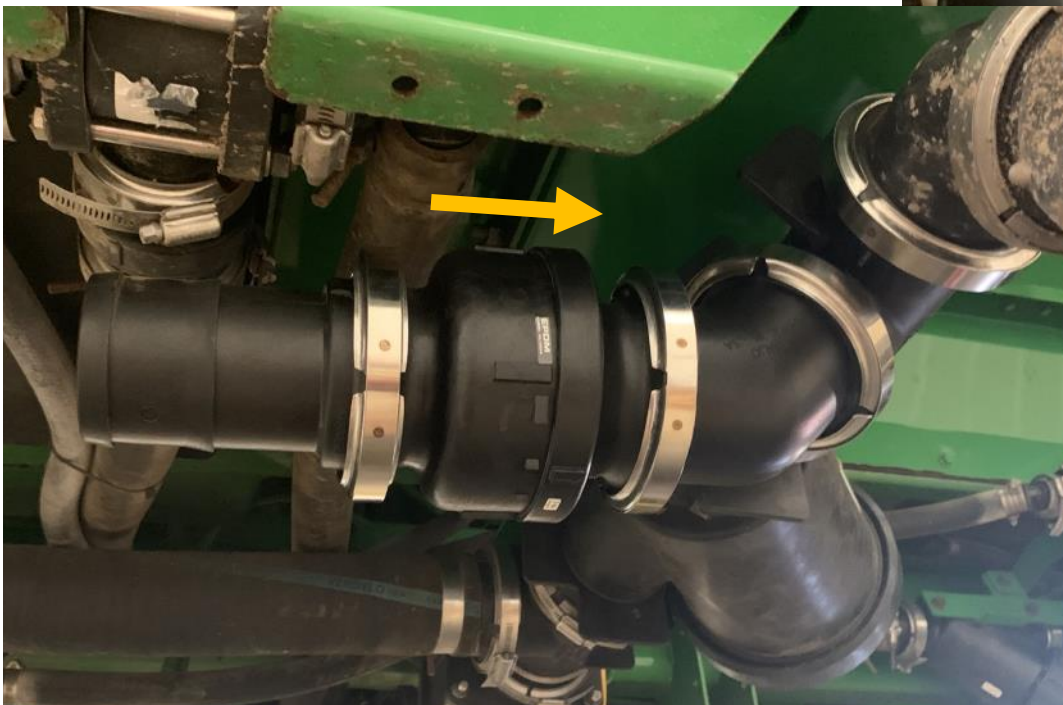
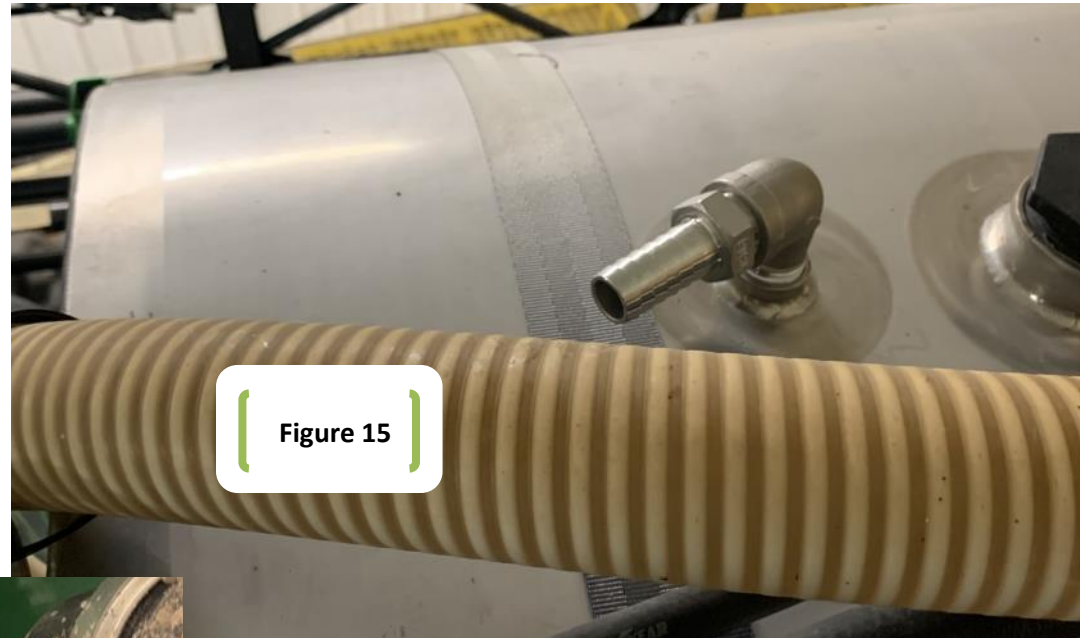


Figure 16

# Kit Installation

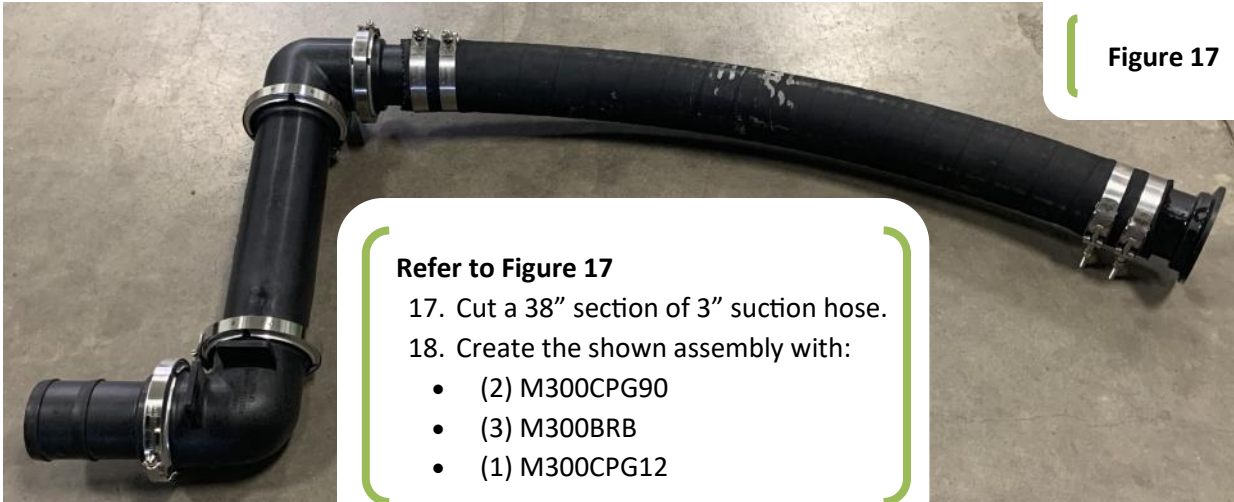


Figure 17

### Refer to Figure 17

17. Cut a 38" section of 3" suction hose.
18. Create the shown assembly with:
  - (2) M300CPG90
  - (3) M300BRB
  - (1) M300CPG12

### Refer to Figures 18 & 19

19. Fish the assembly over the frame of the sprayer, just in front of the pump.

**Note: the hose/flange end should stick past the right side of the frame.**



Figure 18

Figure 19



# Kit Installation



Figure 20

## Refer to Figures 20 & 21

20. Install a tee fitting on the newly positioned hose; orient at 45 degrees.
21. On the top side, connect the flange plug/hose barb assembly and point it down and back.
22. Loosely attach a 45 degree elbow/hose barb (M300BRB45) to the bottom side and to the front assembly too.

## Refer to Figure 22

23. Measure the length of the needed hose and cut. (About 72")
24. Remove the two M300BRB45, slide them in the hose and clamp with 3" T-Bolt hose clamps. **Note: the fittings will be 180 deg off from each other.**
25. Install the hose.



Figure 21

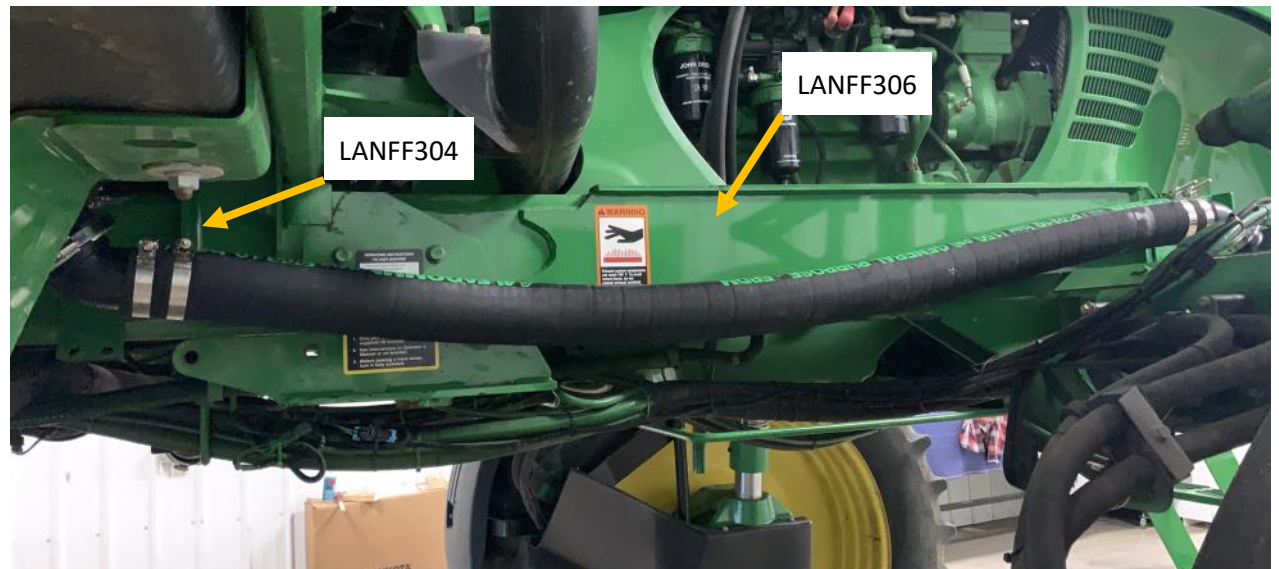


Figure 22

# Kit Installation

## Refer to Figure 23

26. Mount the short hanger (LANFF304) to the frame and add a clamp to hold the hose. Use the 3/8" washers, nyloc nuts and 1" bolts.

## Refer to Figure 24

27. Assemble the magnetic hanger (LANFF306) with the magnets, #10 nyloc nuts and #10 x 7/8" screws.
28. Add a clamp (LANHPXMT) to each to hold the hose, with 3/8" washers, a nyloc nut and 1" bolt.



Figure 23



Figure 24

# Kit Installation

Figure 26



Figure 25



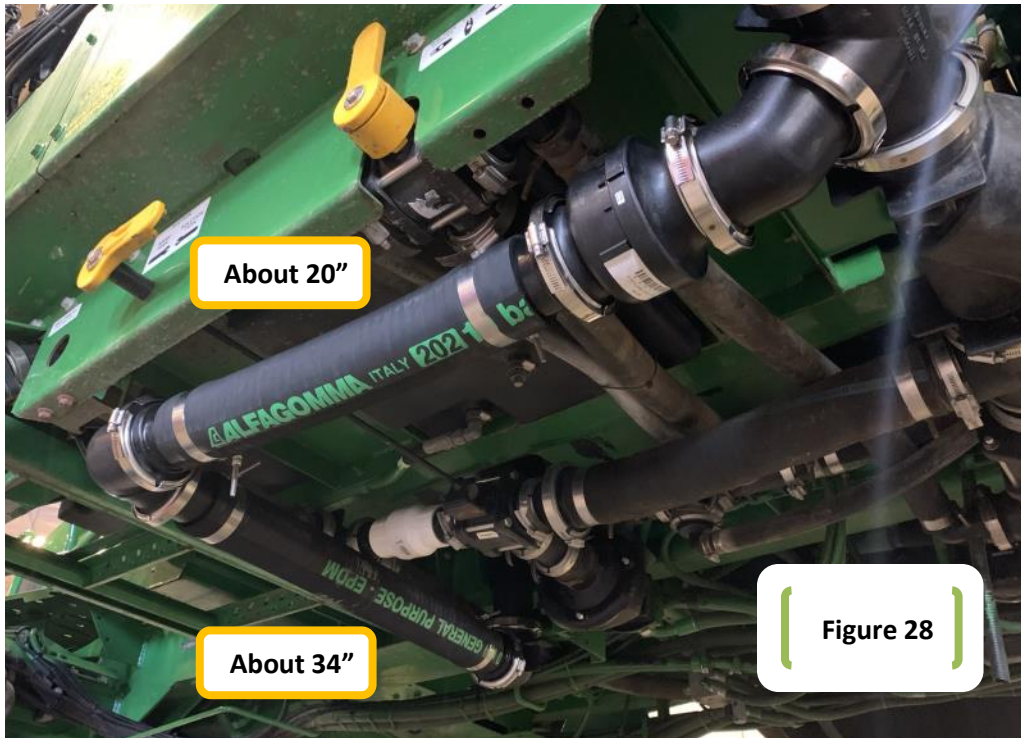
## Refer to Figures 25 - 27

29. Using a 3/4" hose clamp, attach the 3/4" spray hose to the hose barb on top of the tank.
30. Drop the hose down the front of the tank and off to the right side of the sprayer.
31. Connect the end to the hose barb/flange plug assembly (cut off any if necessary) with another 3/4" hose clamp.

Figure 27



# Kit Installation



## Refer to Figures 28 - 30

32. Cut a piece of 3" hose approximately 34" long and install on M300BRB (left side of Figure17) with 3" T-Bolt hose clamp.
33. Install a new M300BRB into the other end and attach a 90 deg elbow (M300CPG90) and loosely fit another M300BRB.
34. Install long hanger (LANFF305) on exiting bolt in the frame.
35. Hang hose from bracket with 3/8" hardware and clamp (LANHPXMT).
36. Measure the required length of last 3" hose (approx. 20").
37. Remove the M300BRB's, install into hose with T-bolt clamps. Reinstall into system and tighten.
38. Mount the corner hanger (LANFF307) with the existing hardware and hang the hose from bracket with 3/8" hardware and clamp (LANHPXMT).

Figure 28

Figure 30



Figure 29





# Kit Installation

## Refer to Figures 31 - 33

39. Attach flange plug/air swivel assembly to the inside of the front Tee.
40. Connect the air swivel and valve assembly to the purge valve mount (LANFF303) with the #10 x 3/8" screws.
41. Bolt the LANFF303 to the main front mount (LANFF302) with (3) 1/4" flange nylocs, washers and 3/4" bolts.
42. Cut a short piece of air tubing and connect the top swivels together.
43. Connect the rest of the air line to the bottom swivel and run it to the backside of the air tank, by the rear wheel.
44. Attach a pair of ring terminal connectors to the one end of the wire cable.
45. Screw terminals onto the switch and insert the switch into the open hole.

**Note: make sure the switch is off in the down position.**

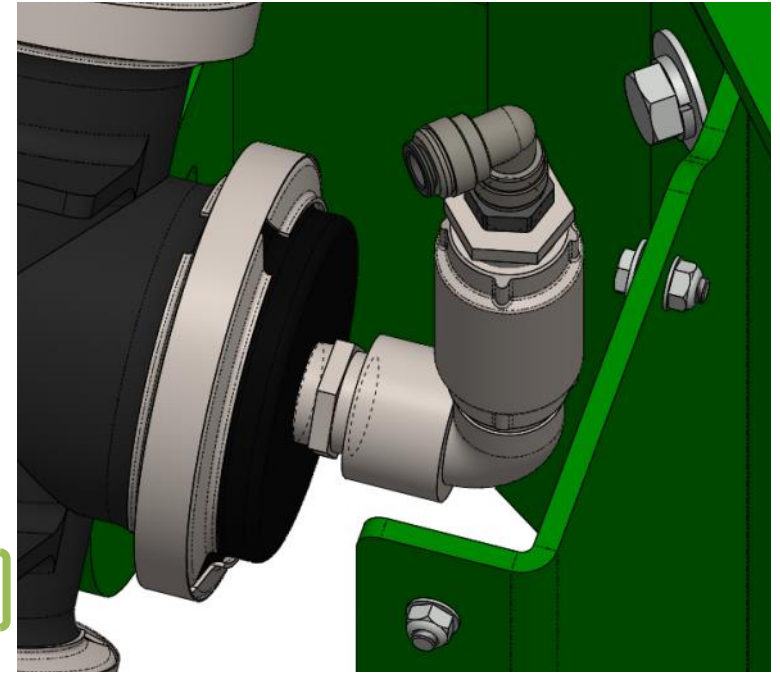


Figure 31



Figure 32



Figure 33

# Kit Installation



Figure 34



Figure 35

## Refer to Figures 34 & 35

46. Run the wire back and over to the side fill area.
47. The wire will connect to the existing switch. Cut off any excess wire and crimp the terminal ends on.
48. Remove the original switch, connect the wires to the switch and reinstall the switch.

## Refer to Figure 36

49. Bleed all the air from the air tank and disconnect the rear, inner airline.
50. Remove the plastic air fitting and the reducer. Replace them with the 1/2 x 3/8 NPT bushing and a 3/8" swivel elbow.
51. Cut a short piece of air line and connect the air tee.
52. Connect the original tube to the tee via the stem reducer.
53. Cut off any excess air line and plumb it into the other side of the tee.

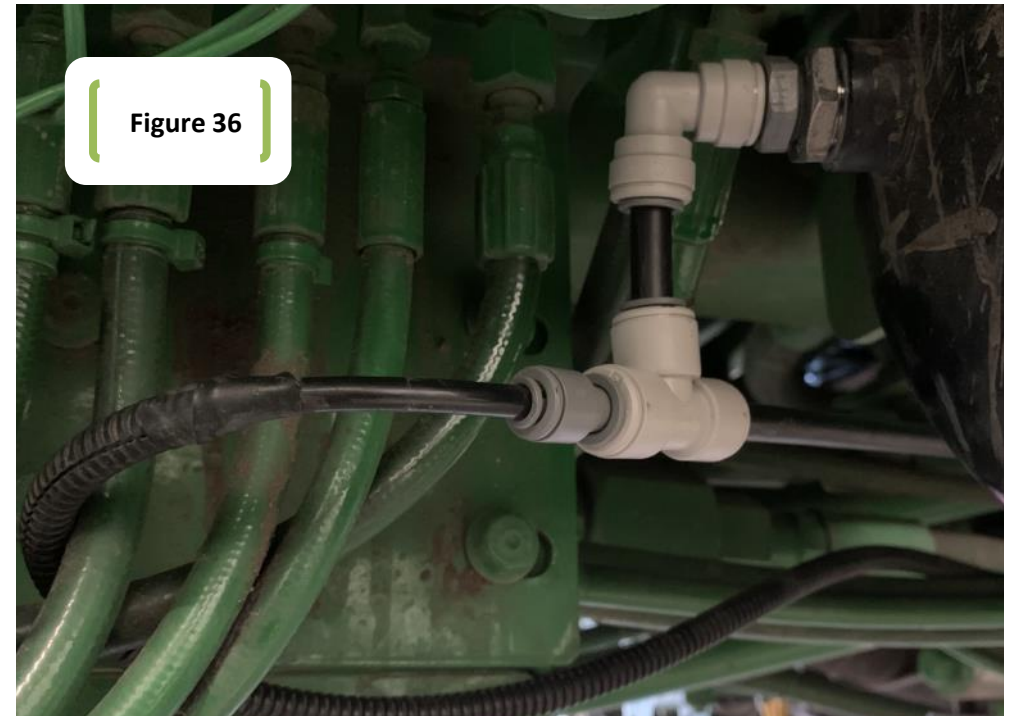


Figure 36

# Kit Installation



**For further technical assistance,  
Call Lankota Inc. at:  
1-866-526-5682**