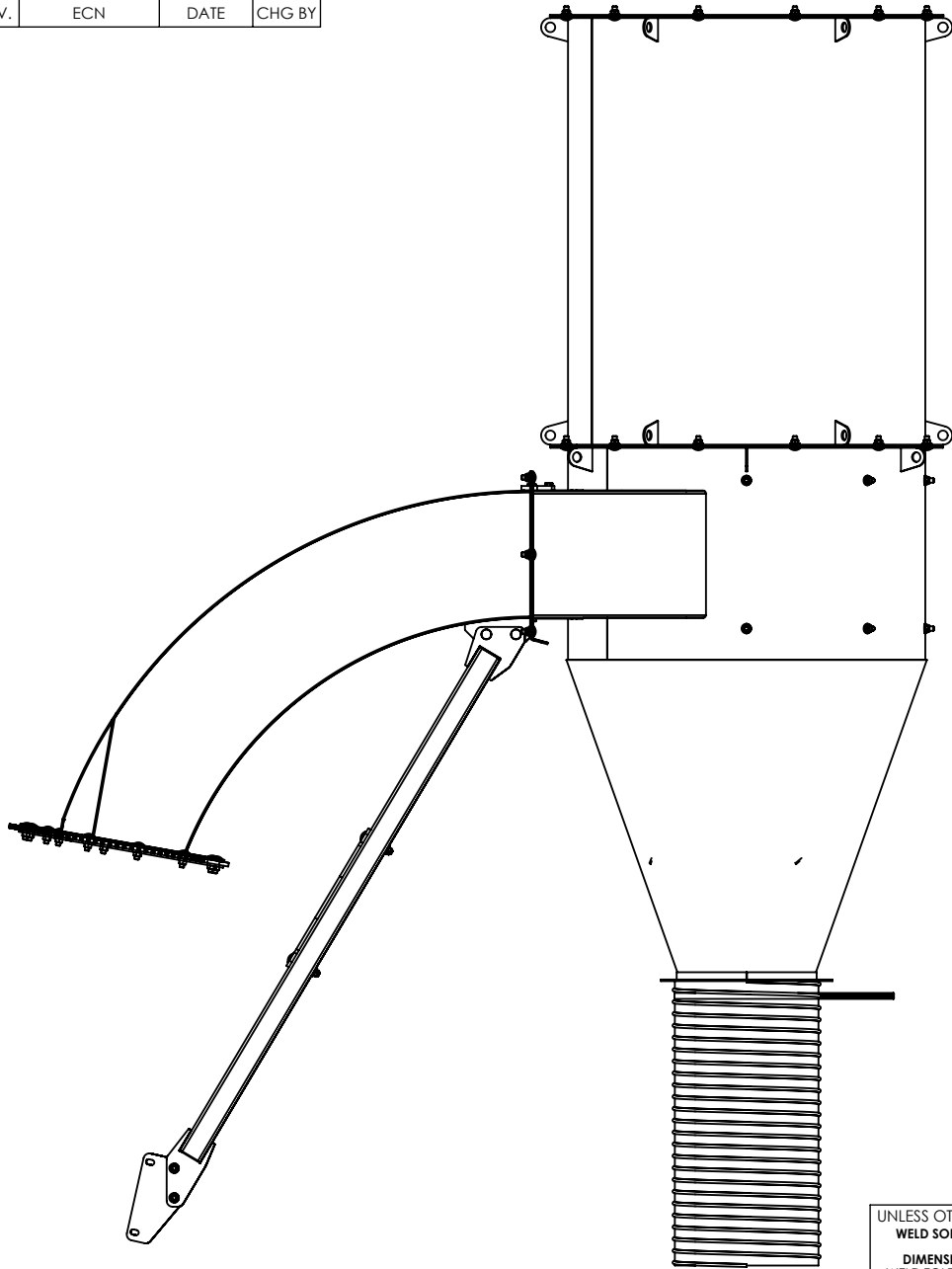


REVISIONS			
REV.	ECN	DATE	CHG BY



ITEM NO.	PART NUMBER	DESCRIPTION	QTY.
1	LANCK170	DISCHARGE CYCLONE CHUTE	1
2	LANCK168	DISCHARGE CYCLONE CHAMBER	1
3	LANCK169	DISCHARGE CYCLONE LID	1
4	LANCK176	DISCHARGE CYCLONE LINER	1
5	LANCK174	DISCHARGE CYCLONE SUPPORT MOUNT	2
6	LANCK172	DISCHARGE CYCLONE SUPPORT	2
7	LANCK173	DISCHARGE CYCLONE STABILIZER	1
8	LANCK1100SC	Jimmy Chute Gear	2
9	RED89SH-0004	Red Devil 8' & 9' Chute Gear Clamp	2
10	RED305K	CARRBLT - .375-16 X 1.25	10
11	LAN18A	CARRBLT - .375-16 X 1	50
12	LANF2E2S	CARRBLT - .375-16 X 2.75	4
13	RED0DTT	TOP LOCK NUT - .375-16, GR. 5	11
14	LANFNW7G	FLG NYL NUT - .375-16, GR. 5	54
15	LANCK177	DISCHARGE CYCLONE BAFFLE TOP	1
16	LANCK178	DISCHARGE CYCLONE HINGE PIN	1
17	LANFWS58	SAE FLAT WASHER - .75	2
18	LANFB305	HHCS - 3/8 x 1.25, GR. 5	1
19	LANSS704	Stalk Stomper Pin Assembly - Bent	1
20	LANCK179	DISCHARGE CYCLONE FLEX OUTLET HOSE	1
21	LANHK4X7	1/2" Wide Spout Clamp	1

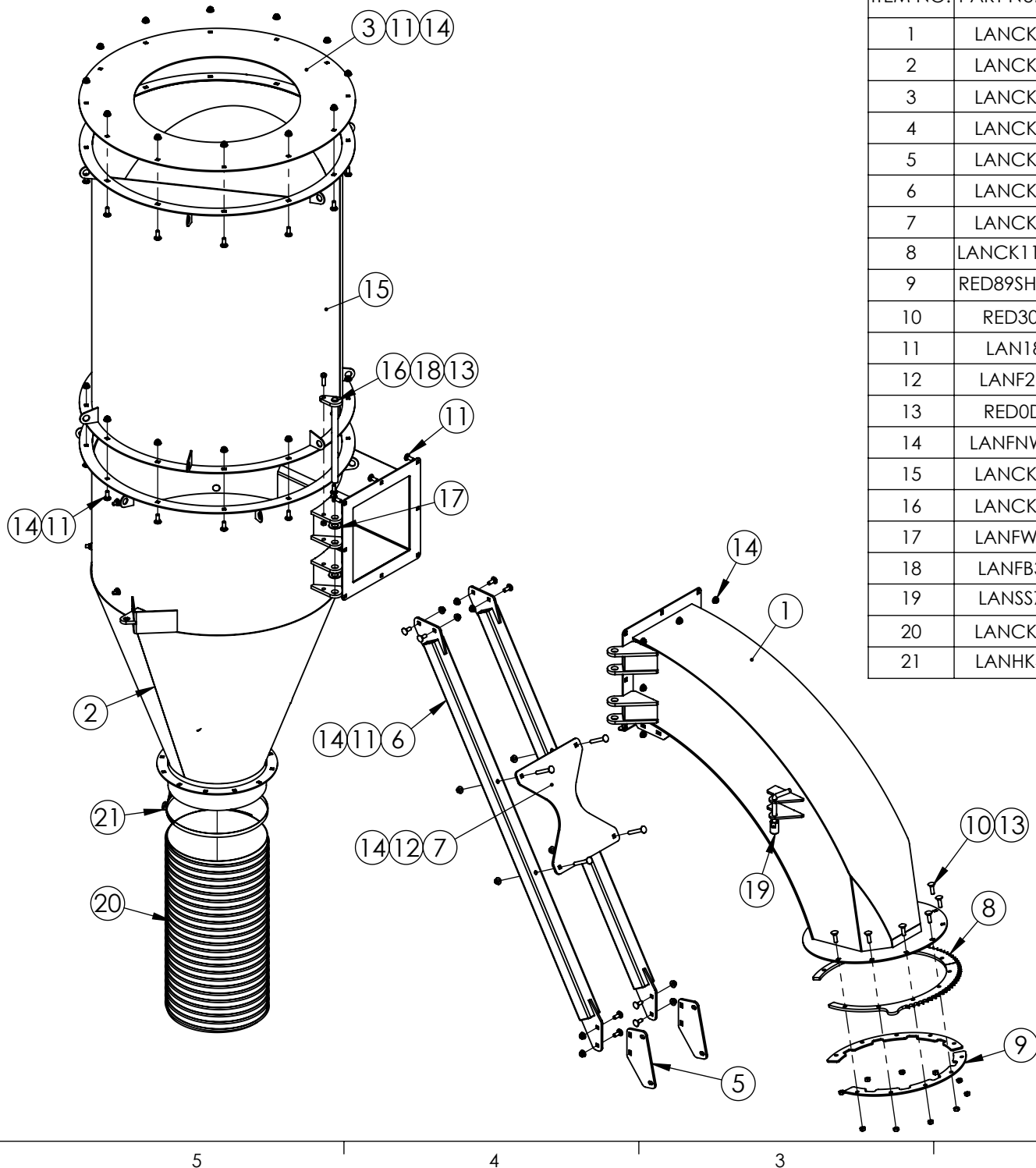
UNLESS OTHERWISE SPECIFIED:  
**WELD SOLID ALL WELDMENTS**  
**DIMENSIONS ARE IN INCHES**  
WELD TOLERANCE ± 0.031  
BEND TOLERANCE ± 0.031  
MACHINING TOLERANCE ± 0.005

**COMMENTS**

**DO NOT SCALE DRAWING**

<b>PROPRIETARY AND CONFIDENTIAL</b> THE INFORMATION CONTAINED IN THIS DRAWING IS THE SOLE PROPERTY OF LANKOTA INC. ANY REPRODUCTION IN PART OR AS A WHOLE WITHOUT THE WRITTEN PERMISSION OF LANKOTA INC. IS PROHIBITED.	
DRAWN BY	
CREATED	12/04/2023
LAST SAVED	3/13/2025
PROJECT	Hammer Mill

<b>LANKOTA</b>		
TITLE: DISCHARGE CYCLONE ASSEMBLY FOR LANCK17157		
SIZE <b>A</b>	DWG. NO. <b>LANCK24567</b>	REV
SCALE: 1:16	WEIGHT: 422.32	SHEET 1 OF 2



ITEM NO.	PART NUMBER	DESCRIPTION	QTY.
1	LANCK170	DISCHARGE CYCLONE CHUTE	1
2	LANCK168	DISCHARGE CYCLONE CHAMBER	1
3	LANCK169	DISCHARGE CYCLONE LID	1
4	LANCK176	DISCHARGE CYCLONE LINER	1
5	LANCK174	DISCHARGE CYCLONE SUPPORT MOUNT	2
6	LANCK172	DISCHARGE CYCLONE SUPPORT	2
7	LANCK173	DISCHARGE CYCLONE STABILIZER	1
8	LANCK1100SC	Jimmy Chute Gear	2
9	RED89SH-0004	Red Devil 8' & 9' Chute Gear Clamp	2
10	RED305K	CARRBLT - .375-16 X 1.25	10
11	LAN18A	CARRBLT - .375-16 X 1	50
12	LANF2EZS	CARRBLT - .375-16 X 2.75	4
13	RED0DTT	TOP LOCK NUT - .375-16, GR. 5	11
14	LANFNW7G	FLG NYL NUT - .375-16, GR. 5	54
15	LANCK177	DISCHARGE CYCLONE BAFFLE TOP	1
16	LANCK178	DISCHARGE CYCLONE HINGE PIN	1
17	LANFWS58	SAE FLAT WASHER - .75	2
18	LANFB305	HHCS - 3/8 x 1.25, GR. 5	1
19	LANSS704	Stalk Stomper Pin Assembly - Bent	1
20	LANCK179	DISCHARGE CYCLONE FLEX OUTLET HOSE	1
21	LANHK4X7	1/2" Wide Spout Clamp	1

# LANKOTA

TITLE:

DISCHARGE CYCLONE  
ASSEMBLY FOR LANCK17157

SIZE

DWG. NO.

REV

A

LANCK24567

SCALE: 1:18

WEIGHT: 422.32

SHEET 2 OF 2