

# LANAUGCIHK

## Installation Instructions

Unloading Auger Extension with “Grain Saver” Door for CaseIH Combines.

**COMBINE MODELS: 1440 TO 2388.**

# LANKOTA<sup>®</sup>

**270 West Park Avenue**

**Huron, SD 57350**

**866-526-5682**

# Numerical Parts List

<b>Part Numbers</b>	<b>Description</b>	<b>Quantity</b>
LANAUGCIH100	Main Body Tube for Case Auger Kit	1
LANAUG009	Auger Tube Black for CASE	1
LANAUGCIH007	Secondary Body (Saddle) For Case Auger Kit	1
LANAUGCIH009	Case Auger Extension Flighting 28"	1
LANAUG2006	¼" Auger Flighting Spacer- Spiral for Auger	1
LANH217334	Spring for Grain Saver	2
LANMOU20516GSA*	Bearing w/ Locking Collar	1
LAN52MM3ZP*	Flange for Auger Extension Kit	2
LAN1616*	5/16" x 18 Nylon Lock Nut	31
LAN4A16A16*	5/16" x 1-1/4" Carriage Bolt	3
LAN93314A*	¼" x 1" Self Tapping Hex Bolt	4
LAN3B16A16*	5/16" x 1 ¼" Bolt	27
LAN1133*	5/16" x ¾" Washer	55
LAN004A14032*	¼" x ½" Carriage Bolt	1

*\*included in bag of hardware.*

# Pictorial Parts List

				
LANAUGCIH100 (1)	LANAUG009 (1)	LANAUGCIH007 (1)	LANAUGCIH009 (1)	LANAUG2006 (1)
				
LANMOU20516GSA(1)*	LAN52MM3ZP (2)*	LANH217334 (2)	LAN93314A (4)*	LAN3B16A16 (27)*
				
LAN1616 (31)*	LAN1133 (55)*	LAN004A14032 (1)*	LAN4A16A16 (3)*	

**Note: The Lankota bearing (LANMOU20516GSA) can be replaced with a John Deere bearing and lock collar (Part Numbers: JD8665 & JD8554 respectively) if it ever goes out.**

# 1. Auger Extension Kit

Refer to Figure 1.1 & 1.2

1.1 Remove end cap, spout and bearing from existing auger.

**Note: When removing the bearing, do not pull the auger off of 90 degree gear box as this will add more time to the installation and will require removing the auger and retiming with the vertical auger.**

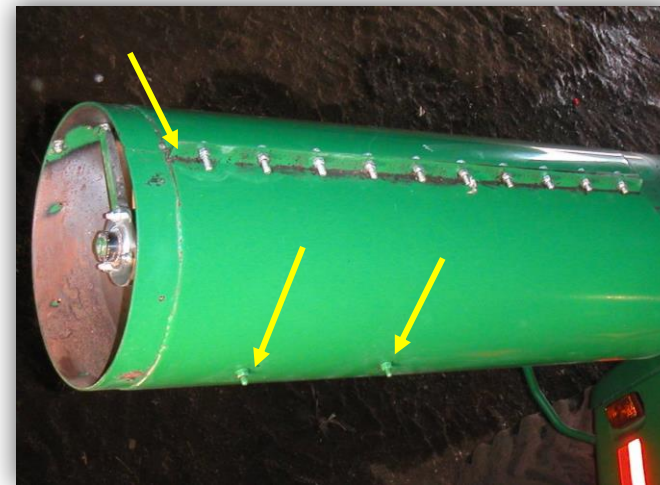
1.2 Slide the Flighting (LANAUGC1H009) onto the auger shaft allowing  $\frac{1}{2}$ " clearance so flighting does not rub on bearing flange. There will be some over lapping of the existing flighting. Make sure new flighting overlaps on the backside of original flighting to ensure a smooth flow of grain. Weld flighting to auger shaft and existing flighting.

1.3 Slide Auger Extension Tube (LANAUGC1H100) over flighting until the holes in the side match with existing holes both on the left and right side. Secure with 5/16 Bolts (LAN3B16A16), Washers (LAN1133) and Lock Nuts (LAN1616). Install 10 bolts, washers and nuts along the top of extension tube.

Figure 1.1



Figure 1.2



Refer to Figure 1.3 & 1.4

1.4 Install Bearing & Locking Collar (LANMOU20516GSA) on the end of the auger shaft, using the 2 Bearing Flanges (LAN52MM3ZP) and three 5/16 Carriage Bolts (LAN4A16A16) and Lock Nuts (LAN1616) provided. Secure locking collar in place after carriage bolts are tight.

1.5 Install provided spring (two springs are provided, one is only for spare if needed) through stationary mount. Install other end of spring on traveling arm. Numerous attachment holes are available so you can set the desired tension on the door.

Figure 1.3

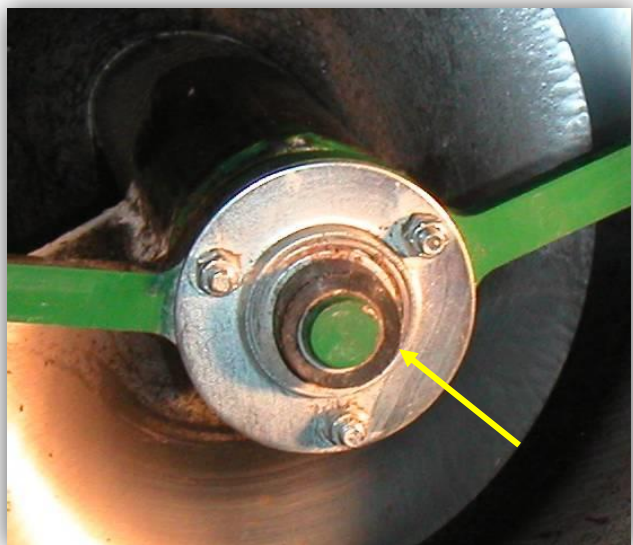


Figure 1.4



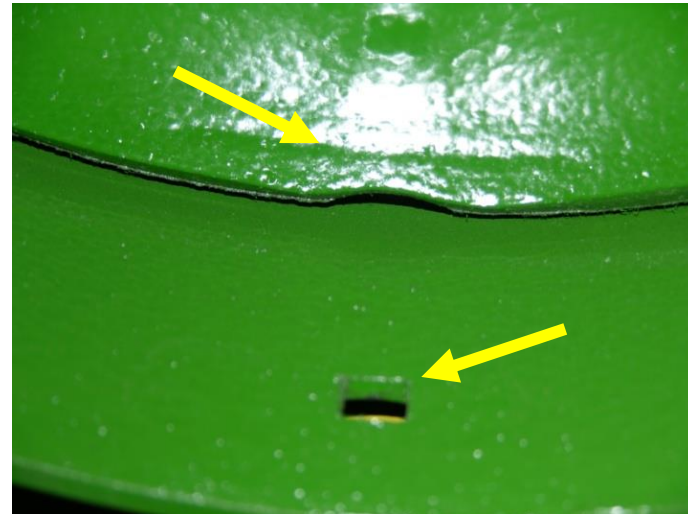
Refer to Figure 1.5& 1.6

1.6 Slide Spout (LANAUGCIH009) over tube, overlapping end by 1 ¼" and align so end points straight down when unfolded. Mark through carriage bolt hole in bottom of red extension. Remove spout and drill at mark with a 5/16" drill bit. Fasten spout (ONLY AROUND THE TOP HALF OF TUBE AVOIDING CONTACT WITH MOVEMENT OF SPRING LOADED DOOR), by using four Self-Tapping Screws (LAN93314A) and seven Washers (LAN1133), through the spout and metal ring (drill pilot holes if necessary). Install Carriage Bolt (LAN14032) down through square hole in bottom of grain saver door. The door should float just over the head of the bolt. Secure bolt with Washer (LAN1133) and Lock Nut (LAN1616).

Figure 1.5



Figure 1.6



*Refer to Figure 1.7*

**1.7 Mount saddle support Sleeve (LANAUGCIH007). Remove the existing small bracket located on the “cradle” at the midpoint of the auger. Position sleeve to center on saddle support when auger is retracted as best as possible. Secure with 5/16” Bolts (LAN3B16A16), Washers (LAN1133) and Lock Nuts (LAN1616) along the top of saddle sleeve. Reinstall original bracket over top of the new sleeve. This will strengthen the entire original tube to compensate for the extension and added weight during unloading.**

*Figure 1.7*



For further questions, you may contact Lankota Inc: 1-866-526-5682