

# LANAUG702K

## Installation Instructions

Unloading Auger Extension with “Grain Saver” Door for John Deere Combines

**COMBINE MODELS: 6620 TO 9750**

# LANKOTA®

**270 West Park Avenue**

**Huron, SD 57350**

**866-526-5682**

# Numerical Parts List

<b>Part Numbers</b>	<b>Description</b>	<b>Qty</b>
<i>LANAUG2005</i>	<i>Auger Tube Black for JD</i>	<i>1</i>
<i>LANAUG2001M</i>	<i>Main Body Tube-Modified</i>	<i>1</i>
<i>LANAUG2004C</i>	<i>Auger Flighting</i>	<i>1</i>
<i>LANAUG2006L</i>	<i>¼" Auger Flighting Spacer-JD</i>	<i>1</i>
<i>LANH217334</i>	<i>Spring for Grain Saver</i>	<i>2</i>
<i>LAN1616*</i>	<i>5/16" x 18 Nylon Lock Nut</i>	<i>20</i>
<i>LAN4A16A16*</i>	<i>5/16" x 1-1/4" Carriage Bolt</i>	<i>3</i>
<i>LAN93314A*</i>	<i>¼" x 1" Self Tapping Hex Bolt</i>	<i>4</i>
<i>LAN3B16A16*</i>	<i>5/16" x 1 ¼" Bolt</i>	<i>16</i>
<i>LAN52MM3ZP*</i>	<i>Bearing Flange</i>	<i>2</i>
<i>LAN1133*</i>	<i>5/16" x ¾" Washer</i>	<i>33</i>
<i>LAN004A14032*</i>	<i>¼" x ½" Carriage Bolt</i>	<i>1</i>
<i>LANMOU20516GSA*</i>	<i>Bearing w/ Lock Collar</i>	<i>1</i>

*\*included in bag of hardware*

**Note: The Lankota bearing (LANMOU20516GSA) can be replaced with a John Deere bearing and lock collar (Part Numbers: JD8665 & JD8554 respectively) if it ever goes out.**

# Pictorial Parts List

 <p>LANMOU20516GSA (1)</p>	 <p>LANAUG2005 (1)</p>	 <p>LANAUG2006L (1)</p>	
 <p>LANAUG2004C (1)</p>	 <p>LAN1616 (20)</p>	 <p>LAN4A16A16 (3)</p>	
 <p>LAN933314A (4)</p>	 <p>LAN3B16A16 (16)</p>	 <p>LAN52MM3ZP (2)</p>	
 <p>LANAUG2001M (1)</p>	 <p>LAN1133 (33)</p>	 <p>LANH217334 (2)</p>	 <p>LAN004A14032 (1)</p>

# 1. Auger Extension Kit

## Refer to Figures 1.1 & 1.2

1. Remove end cap, spout and bearing from existing auger.

**NOTE:** When removing the bearing, do not pull the auger off of 90 degree gear box as this will add more time to install and will require removing the auger and retiming with vertical auger. If you do pull auger out, remove inspection door and mark the alignment of the two augers.

2. Slide the flighting (LANAUG2004C) onto the auger shaft allowing  $\frac{1}{2}$ " clearance so flighting does not rub on bearing flange (Figure 1.2). There will be some over lapping of the existing flighting. Make sure new flighting overlaps on the proper side of original flighting to ensure a smooth flow of grain. Weld flighting to auger tube and existing flighting. Spiral space (LANAUG2006) is provided as a spacer to be placed between auger flighting and auger tube before welding.

**NOTE:** This is only used on some earlier model combines that have a smaller diameter shaft than most models.

3. Slide Auger Extension Tube (LANAUG2001M) over flighting until the holes in the side match with existing holes on the left and right sides. Secure with 5/16" bolts (LAN3B16A16), washers (LAN1133) and lock nuts (LAN1616). Install 10 Bolts, Washers, and Nuts along the top of extension tube.

Figure 1.1

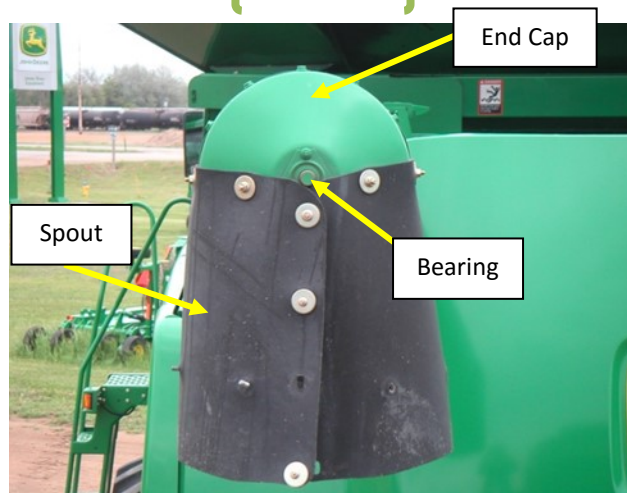


Figure 1.2



**Refer to Figures 1.3 & 1.4**

4. Install Bearing & Locking Collar (LANMOU20516GSA) on the end of the auger shaft, using the 2 Bearing Flanges (LAN52MM3ZP) and three 5/16" Carriage Bolts (LAN4A16A16) And Lock Nuts (LAN1616) provided. Secure locking collar in place after carriage bolts are tight.
5. Install provided spring through stationary mount; two springs are provided, one for a spare if needed. Install other end of spring on the traveling arm. Several attachment holes are available so you can set the desired tension on the door.



Figure 1.3

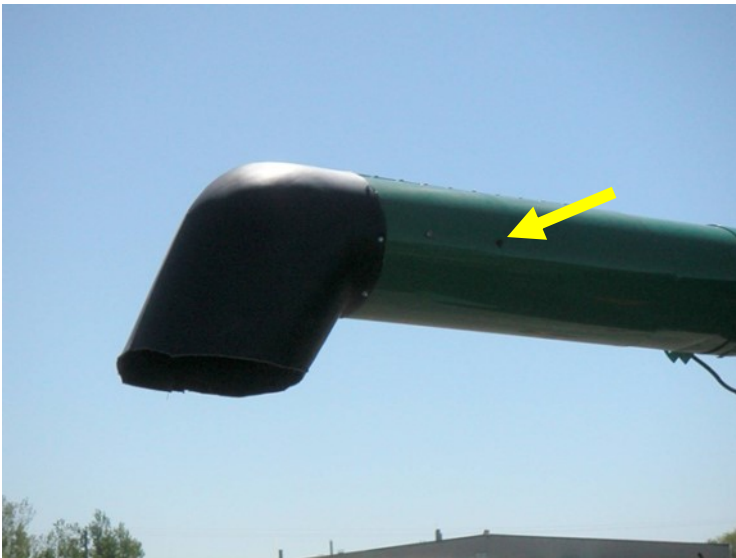


Figure 1.4

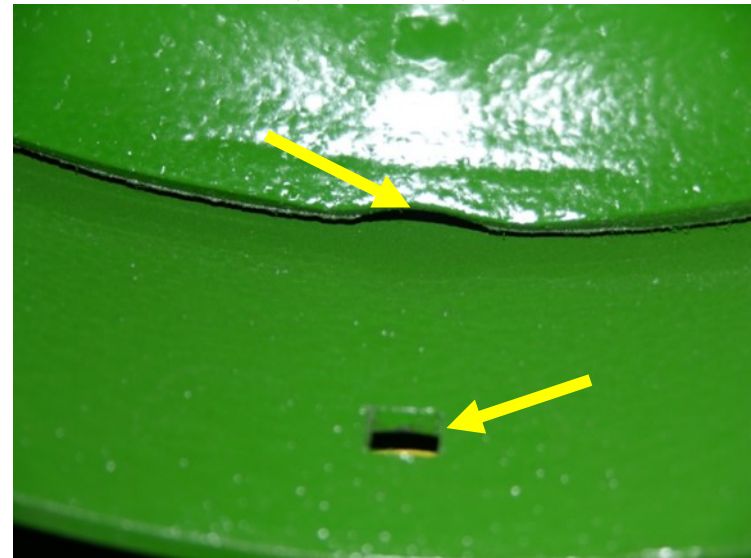
**Refer to Figure 1.5&1.6**

- Slide spout (LANAUG2005) over lapping end by 1 ¼" and align so end points straight down. It may be possible that you will have to notch out the spout or the moving shaft on the flapper door. Mark through carriage bolt hole in bottom of green extension. Remove spout and drill at mark with 5/16" drill bit. Fasten spout (ONLY AROUND THE TOP HALF OF TUBE AVOIDING CONTACT WITH MOVEMENT OF SPRING LOADED DOOR) by using four self-tapping screws (LAN93314A) along with eight washers (LAN1133) through the spout and metal right (drill pilot holes if necessary). Install carriage bolt (LAN14032) down through square hole in bottom of ring through black to secure bottom half of spout. The "moon" shaped cut out in the bottom of the grain saver door should float just over the head of the bolt. Secure the bolt with washer (LAN1133) and lock nut (LAN1616).

*Figure 1.5*



*Figure 1.6*



**For more technical information,  
call Lankota at 1-866-526-5682**