

LANAP300

Installation Instructions

Converts Early Model Belt Pick-up Heads to 50, 60 & 70 Series Combines

DO NOT USE THIS KIT FOR 12' PICKUP HEADS

LANKOTA®

270 West Park Avenue
Huron, SD 57350
866-526-5682

Numerical Parts List

Part Numbers	Description	Qty
LAN935-27690	D350 Drive Shaft	1
LAN108	PTO Support Bracket (1 Unit)	1
LAN26220	Hex Shaft Assembly for AP300 Kit (11" Long)	1
LAN103C	Hanger Bearing Mount C	1
LAN103E	Hanger Bearing Mount E	1
LAN105	Bearing Flange	4
LAN207KRRB12	1.125" Hex Bearing	2
LAN3718	3/8" Serrated Flange Nut	9
LAN18A	3/8" x 1.0" Carriage Bolt	9
LANFB526	1/2" x 6.5" Gr. 5 Hex Bolt	1
LANF-HN-0.500C	1/2" Hex Nut	1
REDWL55	1/2" Lock Washer	1
LAN22000	1/2" Flat Washer	2
LANSC2-1125-BO	Double Split Hex Locking Collar	1

Pictorial Parts List

 <p>LAN935-27690 (1)</p>	 <p>LAN103E (1)</p>	 <p>LAN105 (4)</p>	 <p>LAN207KRRB12 (2)</p>	 <p>LANSC2-1125-BO (1)</p>
 <p>LAN103C (1)</p>	 <p>LAN3718 (9)</p>	 <p>LAN18A (9)</p>	 <p>LANFB526 (1)</p>	 <p>LANF-HM-0.500C (1)</p>
 <p>LAN26220 (1)</p>	 <p>LAN22000 (2)</p>	 <p>REDWL55 (1)</p>	 <p>LAN108 (1)</p>	

Kit Installation



Figure 1

Refer to Figures 1 - 4

1. Remove the side shield from the right hand side of the header.
Note: During this procedure you will be required to remove the drive chain that runs the auger from the jack shaft. Make sure you follow manufacturer's guidelines.
2. Remove drive chain from the right side of header. Remove the nut from the shaft.
3. Slide the sprocket off the shaft.
4. Remove slip clutch and hex shaft assembly in the direction shown in (Figure 4).



Figure 3



Figure 4



Figure 2

Kit Installation

Refer to Figures 5 & 6

5. Remove support bracket from back of head.
6. Remove the (3) bolts holding the bearing and the bearing itself from the head.

Figure 5

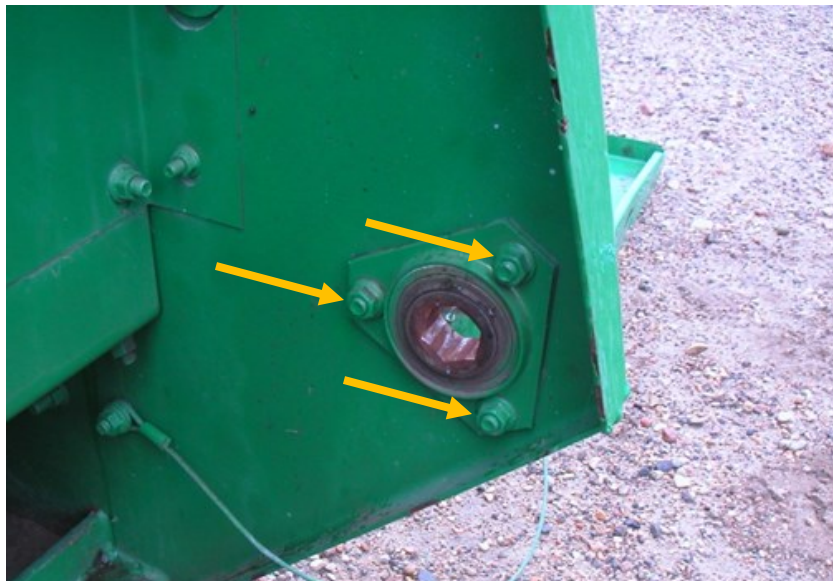


Figure 6

Kit Installation

Refer to Figure 7

7. Install the hex bearing (LAN207KRRB12) and 2 bearing flanges (LAN105) on the inside of the head; retain with 3 carriage bolts (LAN18A) and 3 lock nuts (LAN3718).
8. Slide Hex Shaft Assembly (LAN26220) through hex bearing (LAN207KRRB12) using the provided alignment of new sprocket to large sprocket.
9. Slide the hex locking collar (LANSC2-1125-BO) over the shaft (LAN26220) and tighten the set screw to hold it in place.

Refer to Figure 8

10. Mount hex bearing (LAN207KRRB12) and 2 bearing flanges (LAN105) to the support bracket (LAN103E) and retain with 3 carriage bolts (LAN18A) and 3 lock nuts (LAN3718).



Figure 7



Figure 8

Kit Installation

Refer to Figure 9

11. Slide support bracket (LAN103E) onto the hex shaft. Position support bracket (LAN103C) vertically as shown in Figure 9 on the right and clamp to the top beam. The support bracket (LAN103E) should be on the inside of the (LAN105) flange (LAN105) so there is room for the drive line yoke (LAN395830) to slide far enough onto the hex shaft (LAN26220) to couple.
12. Attach support bracket (LAN103C) to LAN103E using three carriage bolts (LAN18A) and nuts (LAN30718). The support bracket (LAN103C) uses two existing holes on the bottom of the brackets as shown in Figure 9.
13. Adjust the brackets using the slotted holes so that they are level and plumb, making sure that the chain is running straight on the sprocket. Mark and drill a hole for the bolt (LANFB526) on the top beam and secure with 1/2" washer (LAN22000), lock washers (REDWL55) and nut (LANF-HN-0.500C).

Figure 10



Figure 9

Kit Installation

Refer to Figure 10

14. Drive Shaft (LAN242-27259) will quick couple to combine and to head. If driveshaft is too long, separate halves and cut equal amounts from each half. Cut only amount needed so that drive shaft can be installed. Manual lubrication of internal shaft will be required.

Refer to Figure 11

15. Measure 10 ½ inches from top of header rail along the inside of vertical sub-frame. Grind off paint in this area and the paint on the PTO holder before spot welding PTO Holder (LAN108) to frame. Try installing drive shaft to PTO holder to ensure PTO holder is properly positioned. If position is correct, finalize the welding. After weld has cooled, buff and paint.



Figure 10



Figure 11

For further technical assistance,

Call Lankota Inc. at:

1-866-526-5682