

LANAB21376

Installation Instructions

Lankota Front Axle Shield for JD F4365 & 800R Applicators

LANKOTA®

270 West Park Avenue
Huron, SD 57350
866-526-5682

Parts List

Part Numbers	Description	Qty
LANAB004	Clamping Strap	2
LANAB006	Support Tube	1
LANAB007	Hose Shield	1
LANAB008	Center Bracket	1
LANAB009	End Bracket	2
LANFB314	3/8" x 3.5" Hex Bolt	2
LANFB318	3/8" x 4.5" Hex Bolt	2
LANFM7KV	3/8" x 1" Serrated Flange Hex Bolt	10
LAN3718	3/8" Serrated Flange Nut	14
LAN18000	3/8" Flat Washer	4
LANP37N	1/4"-28 90° Grease Zerk	2



Kit Installation

Refer to Figures 1 & 2

1. Locate the two grease fittings on the ends of the steering cylinders. These are located at the center front side of the front axle. Replace these grease fittings with the provided 90° grease fittings (LANP37N). Tighten the fittings until they are pointing straight towards the rear of the machine.
2. Loop the center bracket (LANAB008) around the front D ring on the axle as shown in Figure 2.

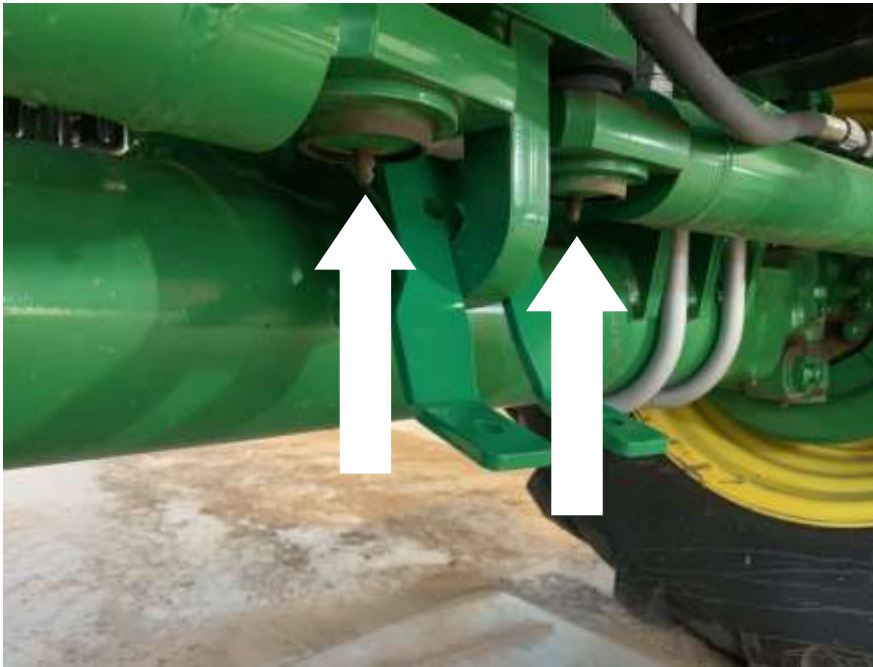


Figure 1



Figure 2

Kit Installation

Refer to Figures 3 & 4

3. Hold the support tube (LANAB006) up to the front axle, with the center up to contact the D ring in the front center of the axle.
4. Attach the clamping straps (LANAB004) around the axle to the support tube on each side using four 3/8" x 1" serrated flange bolts (LANFM7KV) and 3/8" serrated flange nuts (LAN3718). Snug but do not tighten the bolts completely at this time.



Figure 3



Figure 4

Kit Installation

Refer to Figures 5 & 6

5. Starting on one side, bolt through the shield (LANAB007), the support tube (LANAB006), and the end bracket (LANAB009) with a 3/8" x 3 1/2" bolt (LANFB314), 3/8" flat washer (LAN18000), and 3/8" flange nut (LAN3718) on the top. Snug but do not tighten the bolts at this time. Repeat this on the other side.
6. At the center of the axle bolt up through the shield, the support tube, and the center bracket (LANAB008) with two 3/8" x 4 1/2" bolts (LANFB318), 3/8" flat washers, and 3/8" flange nuts on the top. **NOTE: The shield is not shown in Figure 6 for clarity only.**

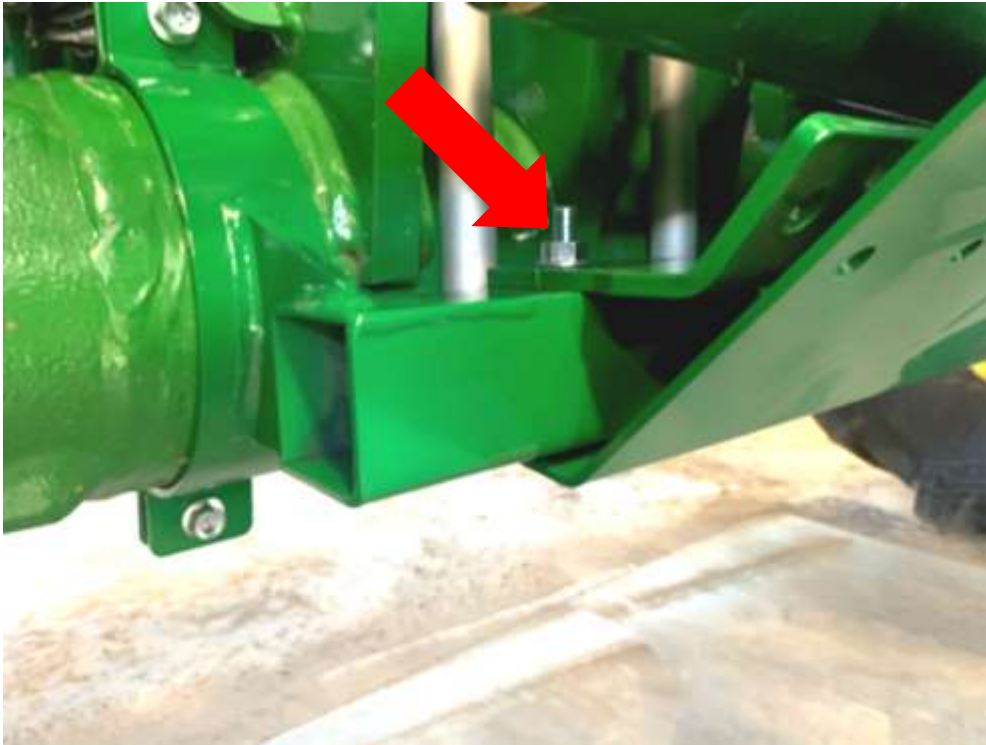


Figure 5



Figure 6

Kit Installation

Refer to Figure 7 & 8

7. Using six 3/8" x 1" serrated flange bolts (LANFM7KV) and 3/8" serrated flange nuts (LAN3718), bolt the front of the shield (LANAB007) to the brackets LANAB008 and LANAB009.
8. Tighten all hardware.



Figure 7



Figure 8

For further technical assistance,

Call Lankota Inc. at:

1-866-526-5682