

LAN84212/213K

Installation Instructions

Converts 00, 10 & 50 Series Narrow-Bodied Contour Master Combine to New Hook Style

LANKOTA®

270 West Park Avenue
Huron, SD 57350
866-526-5682

Numerical Parts List

Part Numbers	Description	Qty
LAN84212W	Tilt Frame Weldment	1
LAN84213SK	Narrow Body Tilt Frame Shield Kit	1
LAN84213A	Tilt Frame Narrow Body Outer Left Panel	1
LAN84213B	Tilt Frame Narrow Body Outer Right Panel	1
LAN84213C	Tilt Frame Narrow Body Inner Left Panel	1
LAN84213D	Tilt Frame Narrow Body Inner Right Panel	1
LAN84213E	Tilt Frame Narrow Body Top Panel	1
LAN19M7784	M10 x 20mm Flange Hex Bolt	6
LAN149461S	Spacer for Poly Wear Block	4
LAN56930	Tilt Frame Cylinder Clevis Pin (3/4" x 2.75")	1
LAN84212BH	Bag of Hardware	1
LAN19M7784	M10 x 20mm Flange Hex Bolt	7
LAN14M7296	M10 Serrated Flange Nut	7

Preparation

1. Unhook any header from combine.
2. Raise the feeder house off the ground and lower the safety stop on the feeder house cylinder.
3. Level the tilt frame.
4. Park the combine on a flat level area and set the parking brake.
5. Turn off the combine engine and remove the key.

Pictorial Parts List

 <p>LAN84212W (1)</p>	 <p>LAN84213A (1)</p>	 <p>LAN84213B (1)</p>	 <p>LAN84213C (1)</p>	 <p>LAN84213D (1)</p>
 <p>LAN149461S (4)</p>	 <p>LAN19M7784 (6 + 7)</p>	 <p>LAN14M7296 (7)</p>	 <p>LAN56930 (1)</p>	 <p>LAN84213E (1)</p>

Remove the Old Tilt Frame



Figure 1

Refer to Figures 1—3

1. Remove the lower left and right bolts (right side has three shorter bolts than left) from base of frame assembly at the arrow locations.
2. Remove bolts and washers from the narrow body panels. **(Blue Arrow)** On the backside of the feeder house there is a nut that is not welded on so apply a wrench to the nut to remove it.
3. Fold back the feeder house cover flap to expose the cable and pin that will need to be removed (See Figure 3).
4. Locate and remove the pin retainer bolt.
5. Remove the cylinder pin.
6. Attach a lifting devise to the frame and lift upwards until it clears the feeder house, then remove it.

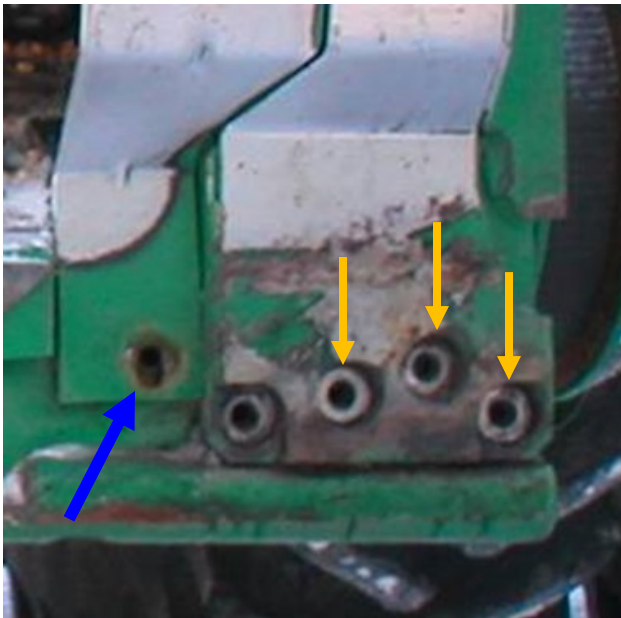


Figure 2



Figure 3

Kit Installation

7. After removal of the old frame, ensure the wear pads are held securely before lowering the new frame into place.
Note: If pads are severely worn, purchase of new pads (H149461) from your local John Deere dealer may be necessary.
8. Lower new frame (LAN84212W) onto combine. Install new cylinder pin (LAN56930) (**cover in anti-seize**) while frame is roughly 3" above the feeder house. Reinstall pin retainer and bolt.
9. When completely lowered, if there is excessive room between wear pads and frame, lift it off again and insert spacers (LAN149461S) behind the pads.
10. Apply thread lock to M16 x 45 bolts and replace the bolts where removed from the feeder house in Figure 2. Torque to 230 lbs or 315 Nm.

Refer to Figures 4—8

Note: Left = Driver's Side, Right = Passenger Side

11. Set the top panel (LAN84213E) on top of the feeder house drum.
12. Install the outer panels (LAN84213A & B) on the new frame. Hand tighten the M10 x 20 flange bolts. (Figures 4 & 5)
13. Attach the inner panels (LAN84213C & D) to the outer panels and frame with M10 x 20 flange bolts and nuts.
14. Reinstall the previously removed bolts through the tilt beam and inner panels. (Figures 2 & 7)
15. Use the remaining M10 hardware to secure the top panel (LAN84213E) to the inner panels and top of the frame.
16. Ensure all hardware is tight.

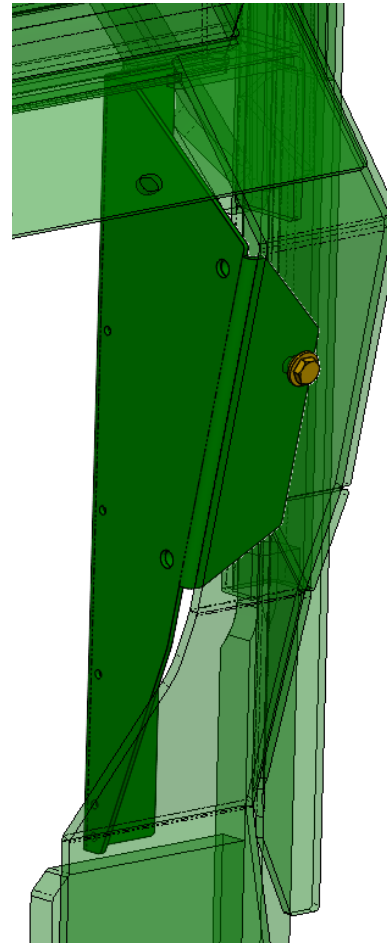


Figure 4

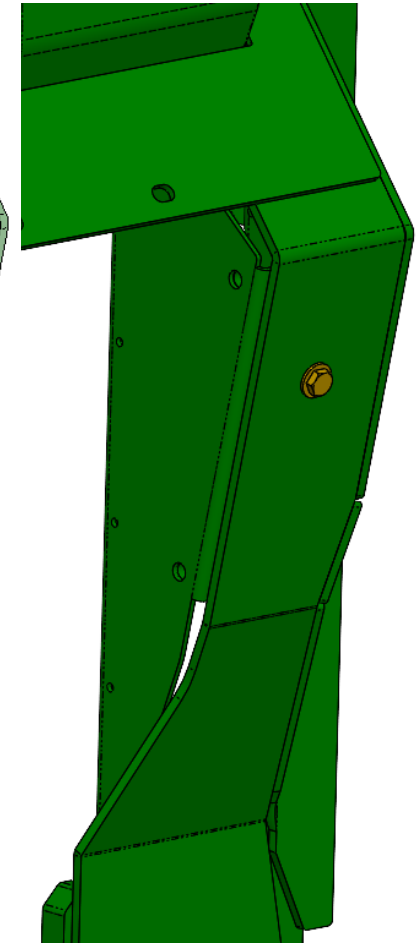


Figure 5

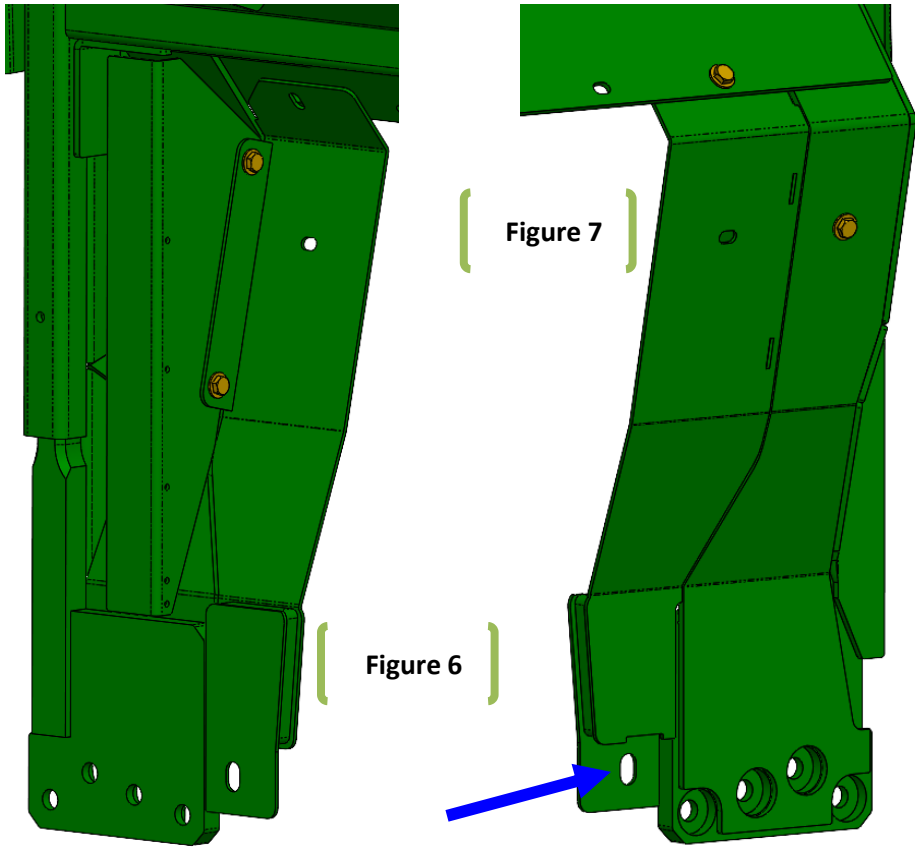


Figure 7

Figure 6

For further technical assistance,

Call Lankota Inc. at:

1-866-526-5682

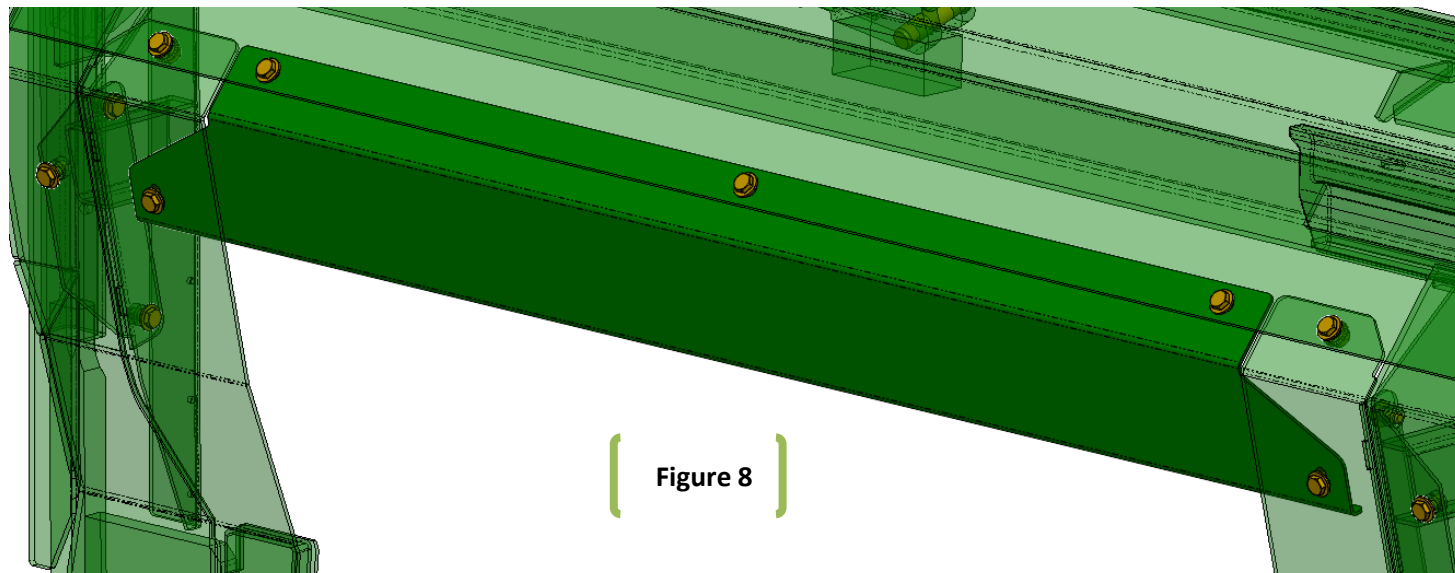


Figure 8