

LAN84108NE

Installation Instructions

Converts 90 Series Corn Heads with Hydraulic Deck Plates to Single Point Hook Up - **NON ELECTRICAL**

LANKOTA[®]

270 West Park Avenue

Huron, SD 57350

866-526-5682

Numerical Parts List

<i>Part Numbers</i>	<i>Description</i>	<i>Quantity</i>
LAN166993A	Multi-Coupler Block	1
LAN204828	Mounting Bracket	1
LAN169707	25.5" x 1/4" Hydraulic Hose	2
LAN84108BH	Bag of Hardware	1
LAN14M7298	M8 Flange Nut	2
LAN03M7185	M8 x 25mm Carriage Bolt	2
LAN18A	3/8" x 1.0" Carriage Bolt	4
LAN3718	3/8" Serrated Flange Nut	4
LAN202510	Velcro Strap	3
LAN6FF	Hydraulic Cap	2

Pictorial Parts List

 <p>LAN169707 (2)</p>	 <p>LAN14M7298 (2)</p>	 <p>LAN18A (4)</p>	 <p>LAN3718 (4)</p>	 <p>LAN03M7185 (2)</p>
 <p>LAN202510 (3)</p>	 <p>LAN6FF (2)</p>	 <p>LAN166993A (1)</p>	 <p>LAN204828 (1)</p>	

Preparation

1. Raise the feeder house, lifting the corn head completely.
2. Shut off the engine, set the parking brake, and lower the safety stop.
3. Always remove paint from areas to be welded to avoid toxic fumes. Always paint, grind, or weld in well ventilated area.

1. Installation of Multi-Coupler Block

Refer to Figures 1 & 2

- 1.1 Disconnect hose from left-hand hydraulic coupler.
- 1.2 Install cap (LAN6FF) onto left hand hydraulic coupler.
- 1.3 Disconnect hose from right hand hydraulic coupler.
- 1.4 Install cap (LAN6FF) onto right hand hydraulic coupler.

Figure 1

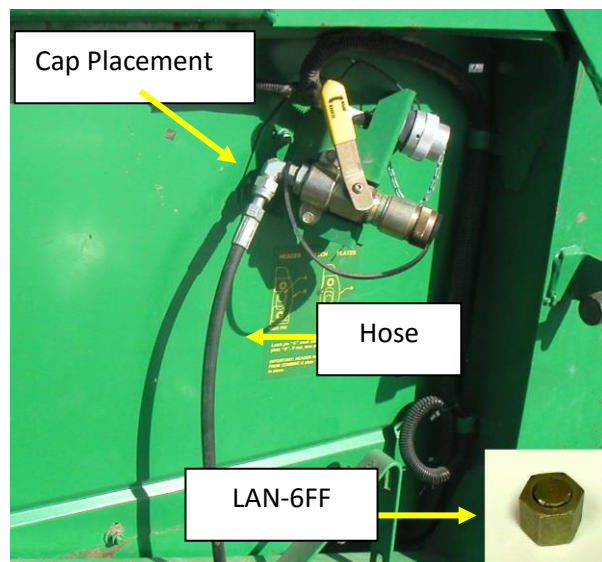
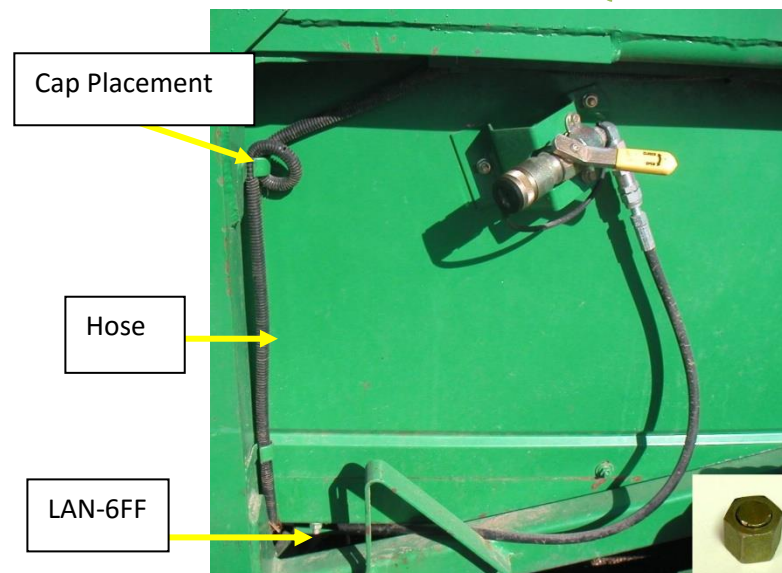


Figure 2



Refer to Figure 3

- 1.5 Pull right hand hydraulic hose down through opening on the right hand side of feeder house opening.



2. Corn Head Shield

Refer to Figures 4 - 6

- 2.1. Remove nuts and right-hand shield under corn head.
- 2.2. Route the right hand hose to left-hand side of corn head, reinstall shield and retain with nuts removed earlier.
- 2.3. Remove nuts and left-hand shield under corn head.
- 2.4. Route the right-hand hose along with existing left-hand hose. Re-install shield with the nuts removed earlier.
- 2.5. Route right-hand hose up through opening.

Figure 4

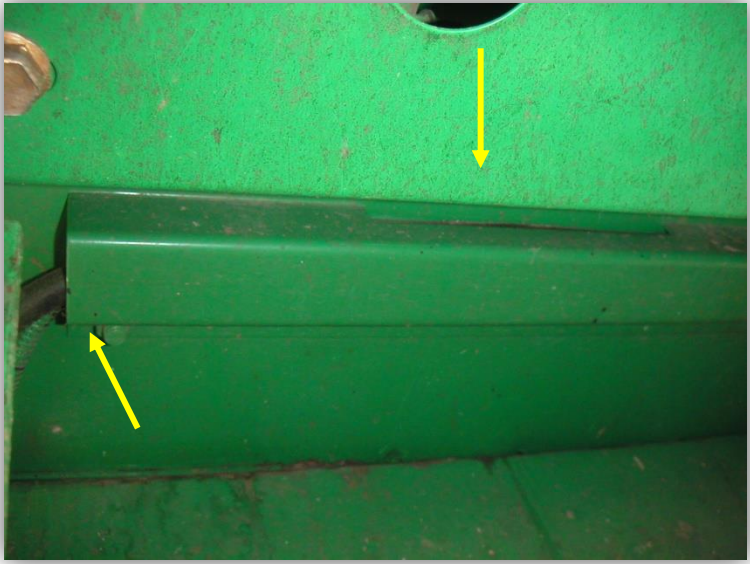


Figure 5

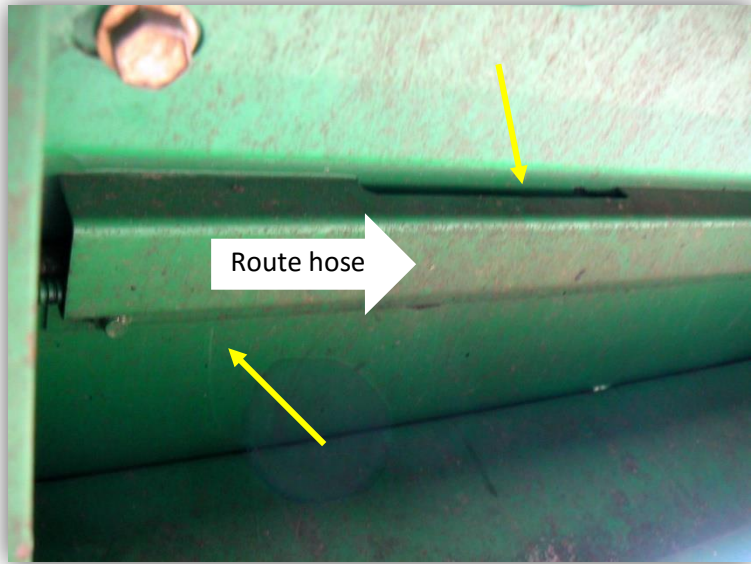
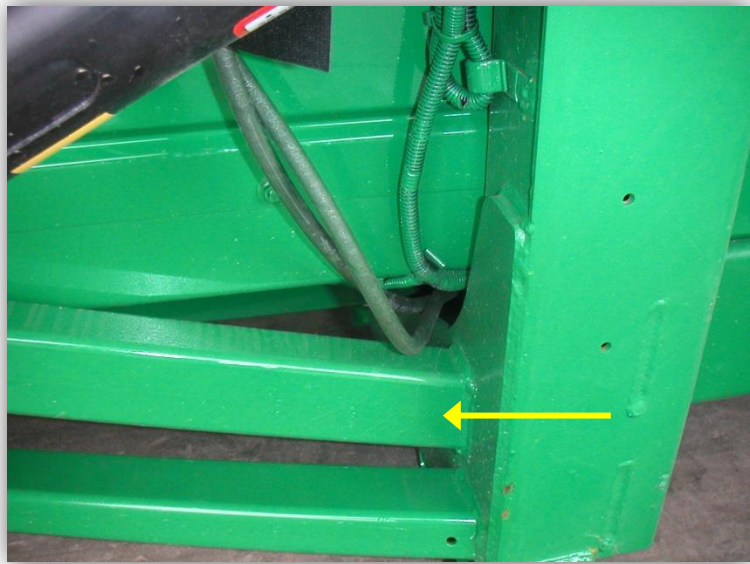


Figure 6



3. Hose and Harness Extension

Refer to Figure 7

- 3.1 Attach (LAN169707) to the hose pulled from the right side and connect swivel to the light blue coupler on the multi-coupler block.
- 3.2 Attach (LAN169707) to the hose pulled from the left side and connect swivel to the dark blue coupler on the multi-coupler block.



Figure 7

4. Mounting Storage Bracket for Single Point Coupler

Refer to Figure 8

- 4.1 Place Multi-Coupler Block (with hoses attached) into storage bracket (LAN204828S).
- 4.2 Find suitable location for the storage bracket in the area shown.
- 4.3 Be sure to find a spot that does not stretch the hoses too tight.
- 4.4 Mark one hole on the storage bracket and drill hole using 3/8" bit.
- 4.5 Align storage bracket to run parallel to top beam of head. Mark and drill the other 3 holes.
- 4.6 Secure bracket with (LAN18A) Carriage Bolts and (LAN3718) Nuts.
- 4.7 Retain hose extensions to back sheet metal with clamps (LAN 25162, Carriage Bolts (LAN 03M7185) and Nuts (LAN 14M7298). Simply position holes and clamps in area easily accessible. Use Velcro straps (LAN 202510) to take up extra slack in hoses.

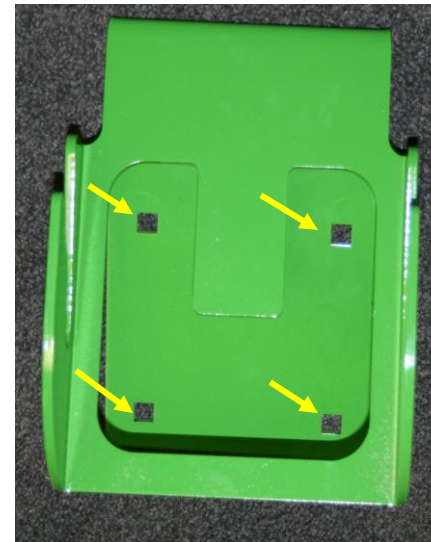


Figure 8

For further technical information contact Lankota at: 866-526-5682