

# LANTH1500

## Installation Instructions

Combine Header Trailer Hitch for CIH® X120, X230, X240, X250 Series Combines

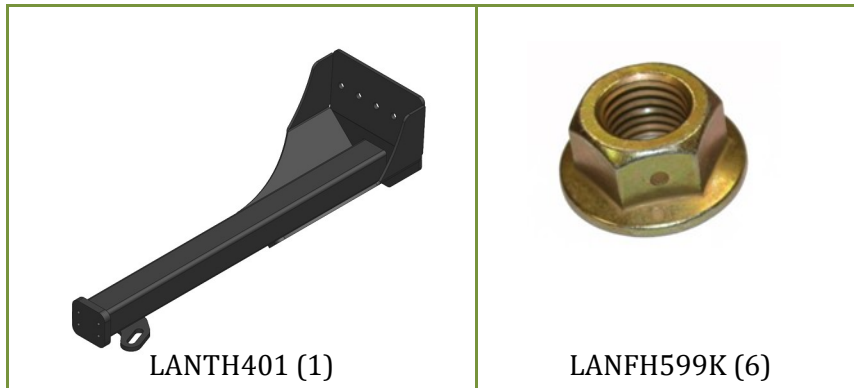
# LANKOTA®

270 West Park Avenue  
Huron, SD 57350  
866-526-5682

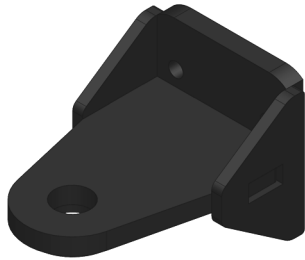
## Numerical Parts List

<b>Part Numbers</b>	<b>Description</b>	<b>Qty</b>
LANTH1501	Hitch Weldment	1
LANFH599K	M20 Flange Head Center Lock Nut	5

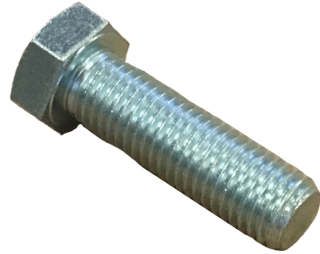
## Pictorial Parts List



# Optional Pictorial Parts List



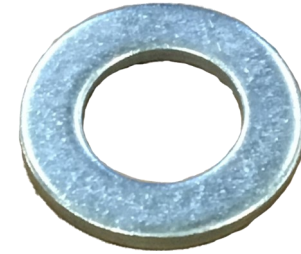
LANTH1451W (1)



LANF2II7 (4)

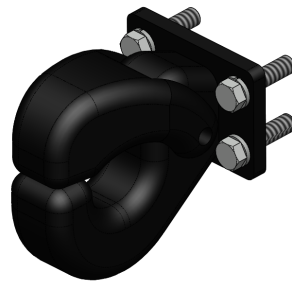


REDWL55 (4)



LANFWS55 (4)

( OR )



LAN10040 (1)



LANFC506 (4)

# Preparation

1. Park combine on hard, level surface.
2. Steer the rear wheels to the left and raise the straw spreader to provide more space for installing this hitch.
3. Set the parking brake on the combine.
4. Turn off the combine engine and remove the key.

# Install Hitch to Axle Using Existing Holes and Bolts

1. Using a sufficient tonnage bottle jack and wood blocks, position the jack under the left hand designated jacking location of the rear axle and lift until the jack is supporting a small amount of weight.
2. Remove the five factory axle nuts on the left side. Continue jacking until the bolts can be easily removed.
3. Remove the extra spacer/washer from the factory bushing on the outside two bolts. Replace the bolts so that all five bolts are in adjacent holes.

Note: the bolts must be in the outer-left-most holes of the central axle frame (See Figure 2).



Figure 1

# Kit Installation

## Refer to Figure 2

**Note:** To aid in ease of installation, it would be helpful to use the long pallet the hitch was shipped on to raise and hold the Axle Base Weldment (LANTH1501) in position.

4. Raise Hitch Weldment (LANTH1501) into place and align holes in the hitch mounting plate with the five bolts in the axle frame. It may be necessary to use a line-up pry bar and/or manipulate the bottle jack up/down to line up all of the axle holes.
5. Install M20 flange nuts (LANFH599K) per bolt as shown in Figure 2. Tighten all hardware.
6. Lower the combine to the ground. Remove the jack and all tools.



Figure 2

# Kit Installation

**Note: If the tube weldment (LANTH1501) does not ship with the appropriate hitch bolted on, follow these steps.**

**Refer to Figure 5**

7. Ensure the threaded holes are clear of any debris by blowing them out with compressed air.

**Refer to Figure 6 (For Clevis Hitch)**

8. Bolt on the clevis hitch weldment (LANTH1451W) with the provided 1/2" x 2" bolts, lock washers and flat washers.

**Refer to Figure 7 (For Pintle Hitch)**

9. Bolt on the pintle hitch with the hardware included in the kit and the 1/2" x 1.5" Bolts.



Figure 3

Figure 4

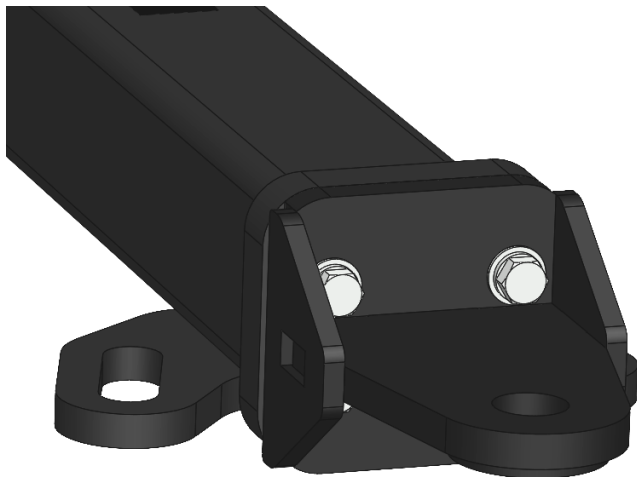


Figure 5





**For further technical assistance,**

**Call Lankota Inc. at:**

**1-866-526-5682**