

LANTC21367

Installation Instructions

Lankota Tow Cable Kit for Fendt® 900 Series Tractors

LANKOTA®

270 West Park Avenue

Huron, SD 57350

866-526-5682





Numerical Parts List

Part Numbers	Description	Qty
LANTC190	Tow Cable Mounting Bracket	1
LANTC191	Bolt Plate	2
LANTC192	Tow Cable Guide Bracket	1
LANTC193	Tow Cable Spacer Plate	6
LANCHALTC1050	Tow Cable Stow Hook	1
LANCHALTC1070	Tow Cable Stow Latch	1
LANCHALTC1080	Tow Cable Stow Extender	1
LAN-JDTC110A	Tow Cable	1
LAN22000	1/2" Washer	2
LAN26000	5/8" Washer	2
LAN26B00	5/8" x 2" Hex Bolt	1
LANF-BZBS-0.69-0.50	Bronze Bushing	1
LANF-FW-M20	M20 Flat Washer	2
LANF-FW-M24	M24 Flat Washer	4
LANF0FSS	M20 x 80 Hex Bolt	2
LANF257T	1 1/4" Double Split Collar	1
LANFB022	1" x 5 1/2" Hex Bolt	2
LANFB910	7/8" x 2 1/2" Hex Bolt	1
LANFE2N5	1"-8 Top Lock Nut	2
LANFJ8J6	M24 x 140 CL 10.9 Hex Bolt	4
LANFWS50	1" SAE Flat Washer	4
LANFWS59	7/8" SAE Flat Washer	2
LANSS704	Twist Lock Pin	1
RED1F30	1/2" Top Lock Nut	1
REDB508	1/2" x 5 Hex Bolt	1
REDKRJ9	7/8" Top Lock Nut	1
REDKRJF	5/8" Top Lock Nut	1

Pictorial Parts List

					
LANTC190 (1)	LANTC191 (2)	LANTC192 (1)	LANCHAL1050 (1)	LANCHAL1070 (1)	LANCHAL1080 (1)
					
LAN-JDTC110A (1)	LAN22000 (2)	LAN26000 (2)	LAN26B00 (1)	LANF-BZBS-0.69-0.50 (1)	LANF-FW-M20 (2)
					
LANF-FW-M24 (4)	LANF0FSS (2)	LANF257T (1)	LANFB022 (2)	LANFB910 (1)	LANFE2N5 (2)
					
LANFJ8J6 (4)	LANFWS50 (4)	LANFWS59 (2)	LANSS704 (1)	LANTC209 (1)	RED1F30 (1)

Pictorial Parts List

					
REDB508 (1)	REDKRJ9 (1)	REDKRJF (1)	LANTC193 (6)		

Kit Installation

Refer to Figures 1 & 2

1. In the mid section of the drawbar between the rear tires, attach the cable mounting bracket (LANTC190). Slide the bolt plates (LANTC191) into place on the top side of the drawbar, directly above LANTC190.
2. Bolt through the cable mounting bracket into the upper threaded bolt plates using four M24 x 140 bolts (LANFJ8J6), with M24 washers (LANF-FW-M24). **Be sure the entire assembly is slid all the way forward until it contacts the drawbar pin housing before tightening the bolts.**



Figure 1

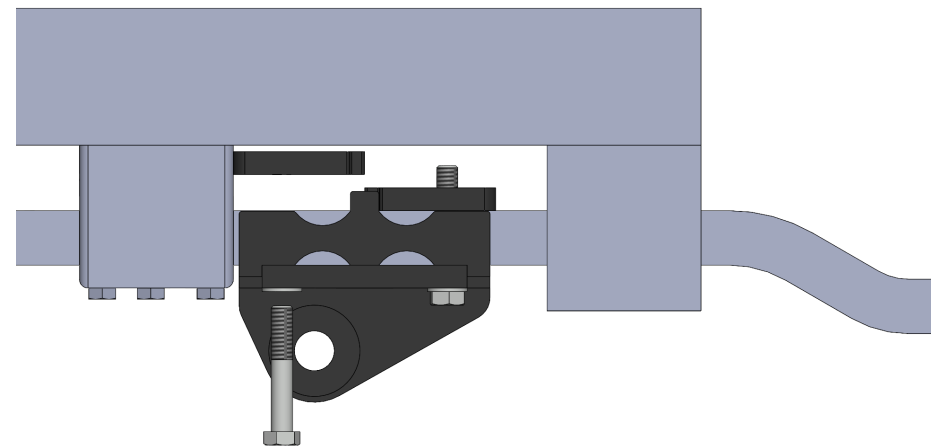


Figure 2

Kit Installation

Refer to Figures 3 & 4

3. Move forward between the front tires under the tractor. Locate the two tapped holes in the underside of tractor that line up with the holes in the cable guide bracket (LANTC192).
4. Attach the cable guide bracket with two M20 x 80 bolts and M20 washers. If needed for line clearance, you can space the guide bracket off the bottom of the tractor using the provided spacer plates (LANTC193).
5. From the front of the tractor, feed the cable assembly (LAN-JDTC110A) into the slot in the cable guide bracket. The collar/washer should be pointed into the cable guide slot (shown below with a green arrow).



Figure 3

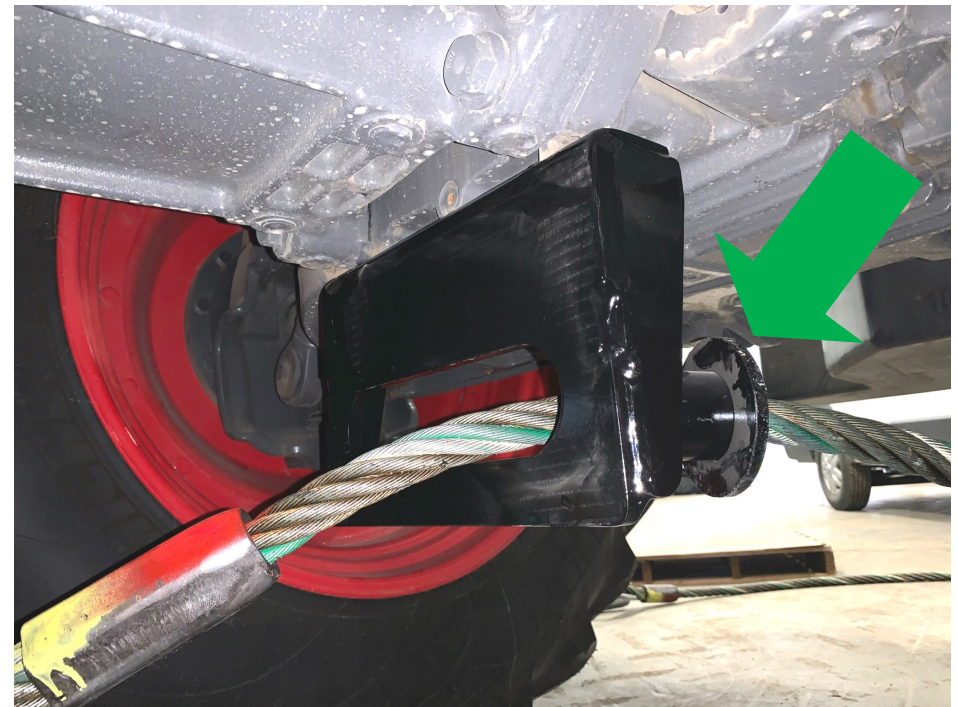


Figure 4

Kit Installation

Refer to Figures 5 - 6

6. Attach the end of the cable to the mounting bracket (LANTC190) using the 1 3/8" shackle (LANTC209).
7. Go to the front of the tractor and pull the slack out the cable by any means necessary (chain come along, forklift, additional person, etc.) Compress the spring and install the split collar (LANF257T), in front of the washer and spring, on the cable.



Figure 5

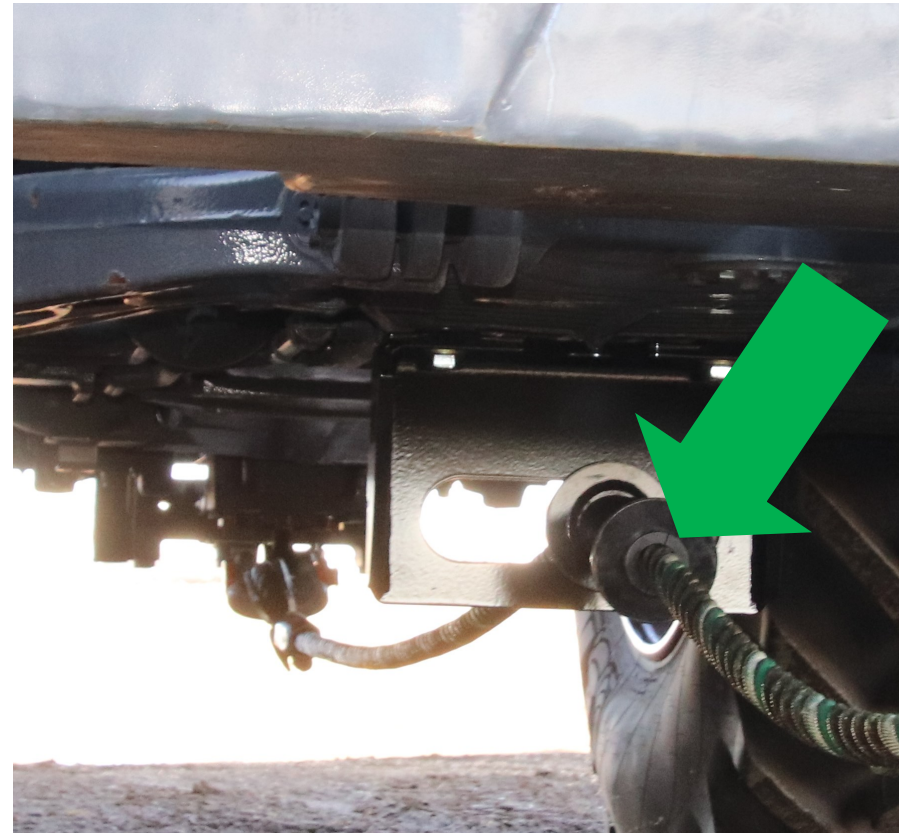


Figure 6

Kit Installation

Refer to Figures 7 - 9

8. Remove the upper pin on the front weight bracket arm on the tractor.

NOTE: If tractor is equipped with a large front weight (2500kg or 3300kg), skip to Step 10.

9. For tractors with a 1250 or 1800 kg front weight, reinstall the pin, pinning through the cable stow hook (LANCHALTC1050) as shown in Figure 7. *Skip to Step 12.*

10. Reinstall the pin, pinning through the cable stow extension (LANCHALTC1080) as shown in Figure 8.

11. Attach the cable stow hook (LANCHALTC1050) to the cable stow extension (LANCHALTC1080) with a 7/8" x 2 1/2" hex bolt (LANFB910), 7/8" washers (LANFWS59), a 7/8" top lock nut (REDKRJ9), and a 1/2" x 2" hex bolt (REDB508), 1/2" washers (LAN26000), and a 1/2" top lock nut (RED1F30).



Figure 7



Figure 8



Figure 9

Kit Installation

Refer to Figures 10 - 12

For tractors with the turnbuckle style top link, pin through the cable stow hook (LANCHALTC1050) using the original pin, or replace the original pin with 1" x 5 1/2" bolt (LANFB022), 1" SAE flat washers (LANFWS50), and 1" top lock nut (LANFE2N5). **If using the original pin, be sure to tap the pin over and replace the original lynch pin (shown with a green arrow below).**

Place and tighten an additional 1" x 5 1/2" bolt, washers and nut in the lower open holes to prevent the cable stow hook from rotating.



Figure 10



Figure 11

Kit Installation

Refer to Figures 12 - 14

12. Attach the stow latch (LANCHALTC1070) to LANCHALTC1050 through the larger of the two holes on both using 5/8" x 2" hex bolt (LAN26B00), two 5/8" washers (LAN26000), bushing (LANF-BZBS-0.69-0.50) and 5/8" nut (REDKRJG).
13. Place the eye of the cable into the stow hook and pin the latch using the "push and twist" pin (LANSS704).



Figure 12



Figure 13



Figure 14



For further technical assistance,

Call Lankota Inc. at:

1-866-526-5682