

LANTC19294

Installation Instructions

Lankota Tow Kit for JD 4930, 4940, R4030, R4038, R4044, R4045 and R4060 Sprayers

LANKOTA®

270 West Park Avenue
Huron, SD 57350
866-526-5682

Numerical Parts List

Part Numbers	Description	Qty
LANTC301	Sprayer Towing Bracket	4
LANTC302	Sprayer Towing Clamp Plate	4
LANTC303	Sprayer Towing Spacer, R4030—R4060	4
LANTC304	Sprayer Towing Spacer, 4930 & 4940	4
LANSF2200X16	Round Sling - 16ft x 22,000 lb WLL (Blue)	1
LANTC208	1-1/4" Bolt-Type Shackle	2
LANTC209	1-3/8" Bolt-Type Shackle	1
REDB512	1/2" x 3" Hex Bolt, Gr 5 (SHEAR BOLT)	8
LANF00QF	1/2" x 2.25" Hex Bolt, Gr 5	8
LANFWS55	1/2" SAE Washer	32
RED1F30	1/2" Top Lock Nut	16

Pictorial Parts List

					
LANTC301 (4)	LANTC302 (4)	LANTC303 (4)	LANTC304 (4)	LANSF2200X16 (1)	
					
LANTC208 (2)	LANTC209 (1)	REDB512 (8)	LANF00QF (8)	LANFWS55 (32)	RED1F30 (16)

Preparation

1. Park sprayer on a hard, flat surface, turn off the engine and remove the key.
2. Stow the three shackles and the sling in an easily accessible location on the sprayer.
3. Ensure that the four D-rings (tow points) of the sprayer are in good condition - not bent and devoid of dents and gouges possibly from being pulled on.

WARNING

Be sure to read instruction manual for proper installation and use.

27,000 lb Maximum Working Load Limit (of the system)

ALWAYS tow from the large shackle, in the center of the provided sling, connected to two tow points on the sprayer.

Sprayer towing kit **MUST** be used as a complete system in accordance with the manufacturer (LANKOTA). Improper use or failure to strictly adhere to instructions at all times when using the sprayer towing kit may lead to property damage, personal injury, or even death.

LANKOTA assumes no liability for damages caused by improper use.

Kit Installation



Refer to Figures 1—5

1. Clear the D-ring of any debris or jagged edges.
2. Determine which spacer fits snugly inside the D-ring and insert it (LANTC303 OR LANTC304).
3. Using 1/2" bolts, washers and lock nuts, fasten the clamp plate and tow bracket to the D-ring; 3" Grade 5 bolts go through the D-ring and spacer, 2-1/4" bolts go outside of the D-ring, furthest from the frame.

NOTE: Make sure the tow bracket (LANTC301) is on the facing towards the CENTER of the sprayer and AWAY from the wheel.

4. Tighten all the bolts.
5. Repeat on other 3 corners/tie-downs of sprayer.

Figure 1



Figure 4

Figure 2



Figure 3

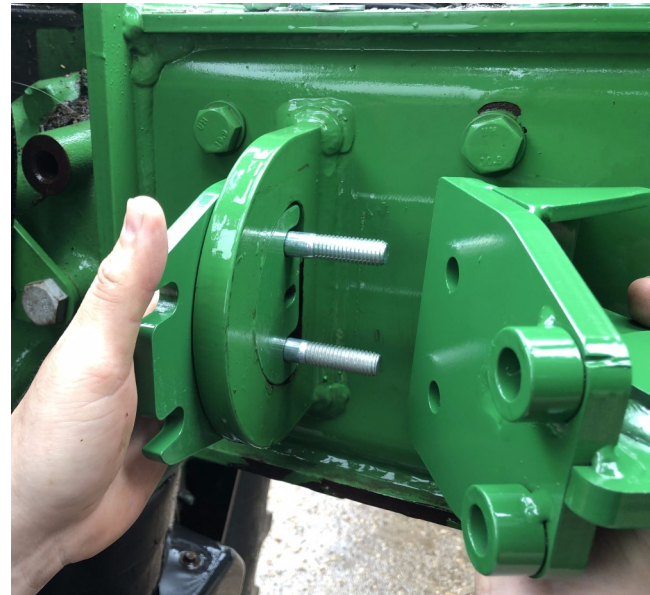
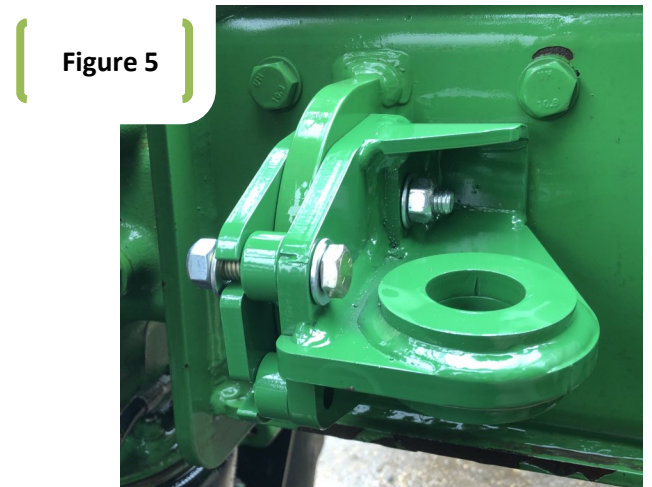


Figure 5



Proper Usage of Kit

Refer to Figures 6—8

1. Remove the sling and shackles from their storage.
2. Connect the sling to one tow point; loop a 1-1/4" shackle (LANTC208) through the sling and pin it onto the tow bracket.
3. Repeat on the other side.
4. Place both strands of the sling in the 1-3/8" shackle (LANTC209).
5. Connect the center shackle to your chosen rigging.
6. Carefully pull your sprayer out of its unfortunate situation.

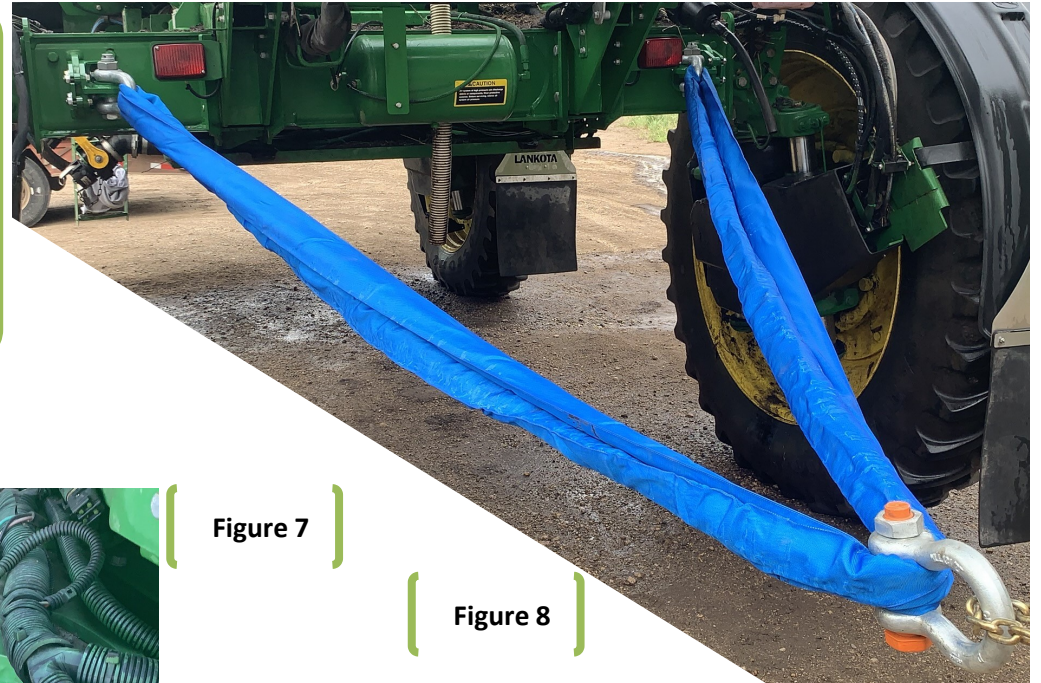


Figure 6



Figure 7



Figure 8

Figure 9

