

LANSPCNH03L&R

Installation Instructions

Lankota Single Point Mounting

for all CIH Quad Trac, NH Smart Trax, 4WD Tractor (2001-Present) & NH 4WD (???? - Present)

LANKOTA®

**270 West Park Avenue
Huron, SD 57350
866-526-5682**

Numerical Parts List

Part Numbers	Description	Qty
LANSPCNH03LW	CNH 4WD Single Point Mount - Left	1
LANSPCNH03RW	CNH 4WD Single Point Mount - Right	1
LANSP002	Single Point 6-Port Block Spacer	2 or 4
LAN44302	Zip Ties	4
LANSPUQHBH	Single Point Block Mounting Hardware	1 or 2
LANFJ9F2	M8 x 45mm Flanged Hex Bolt	4
LANFE01V	M8 x 30mm Socket Head Screw	4
LANFQ65N	M8 Flanged Nyloc	4
LANF2CRC	3/8" x 8" Carriage Bolt	4
LAN18000	3/8" Flat Washer	4
REDWL53	3/8" Lock Washer	4
REDNAF3	3/8" Hex Nut	4

Pictorial Parts List

			
LANSPCNH03LW (1)	LANSPCNH03RLW (1)	LANFJ9F2	
			
LANSP002 (2 or 4)	LAN44302 (4)	LANFE01V	LANFQ65N
			
LANF2CRC	LAN18000	REDWL53	REDNAF3

Kit Installation

Refer to Figures 1 & 2

1. Remove any and all types of electrical connections, from the standard bracketry above the hydraulic SCV's, and set them aside.
2. Remove the brackets from the hydraulic blocking. Retain the hardware for reuse.

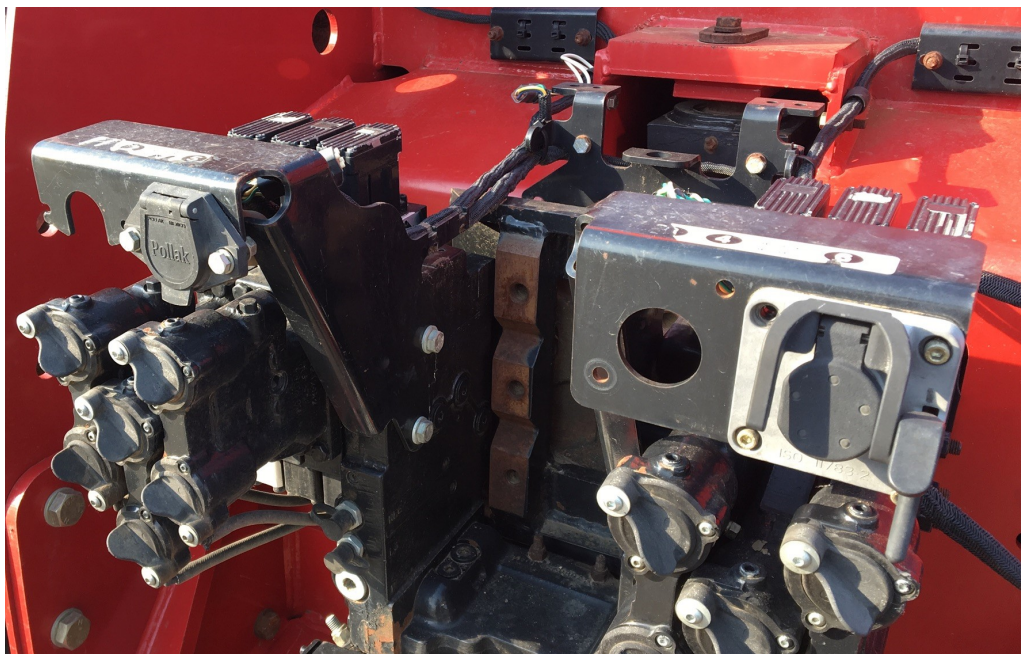


Figure 1

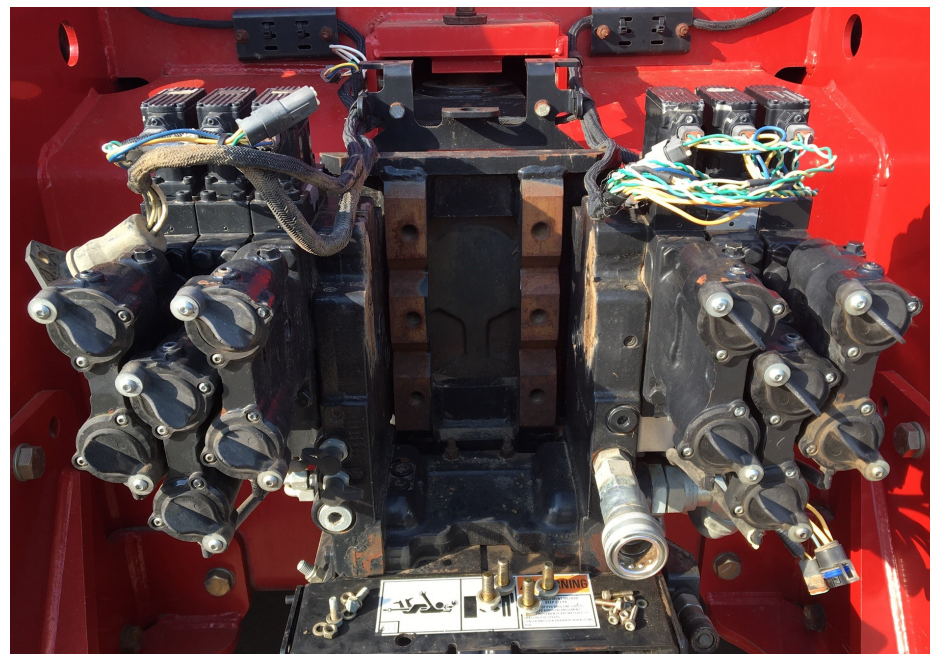


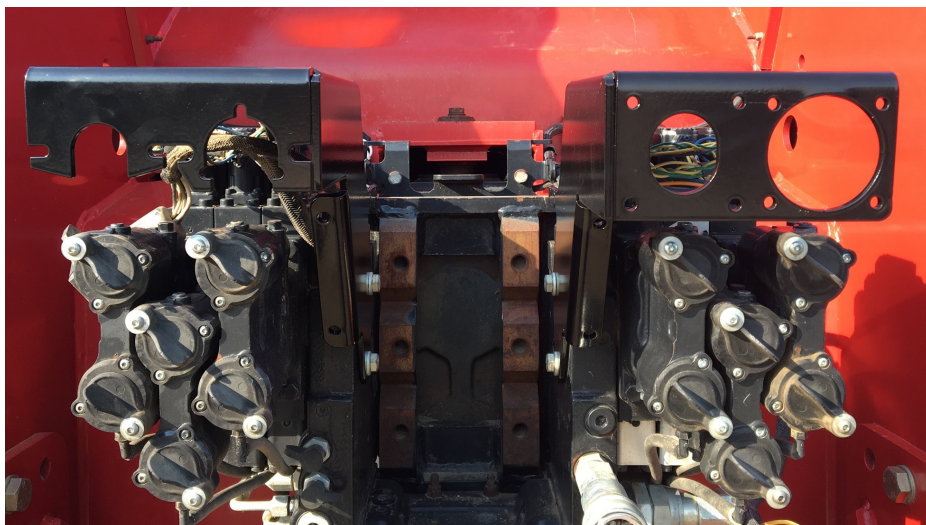
Figure 2

Kit Installation



Figure 3

Figure 4



Refer to Figures 3 & 4

3. Install the bracket(s) on their respective side(s).
4. Use the hardware previously removed.

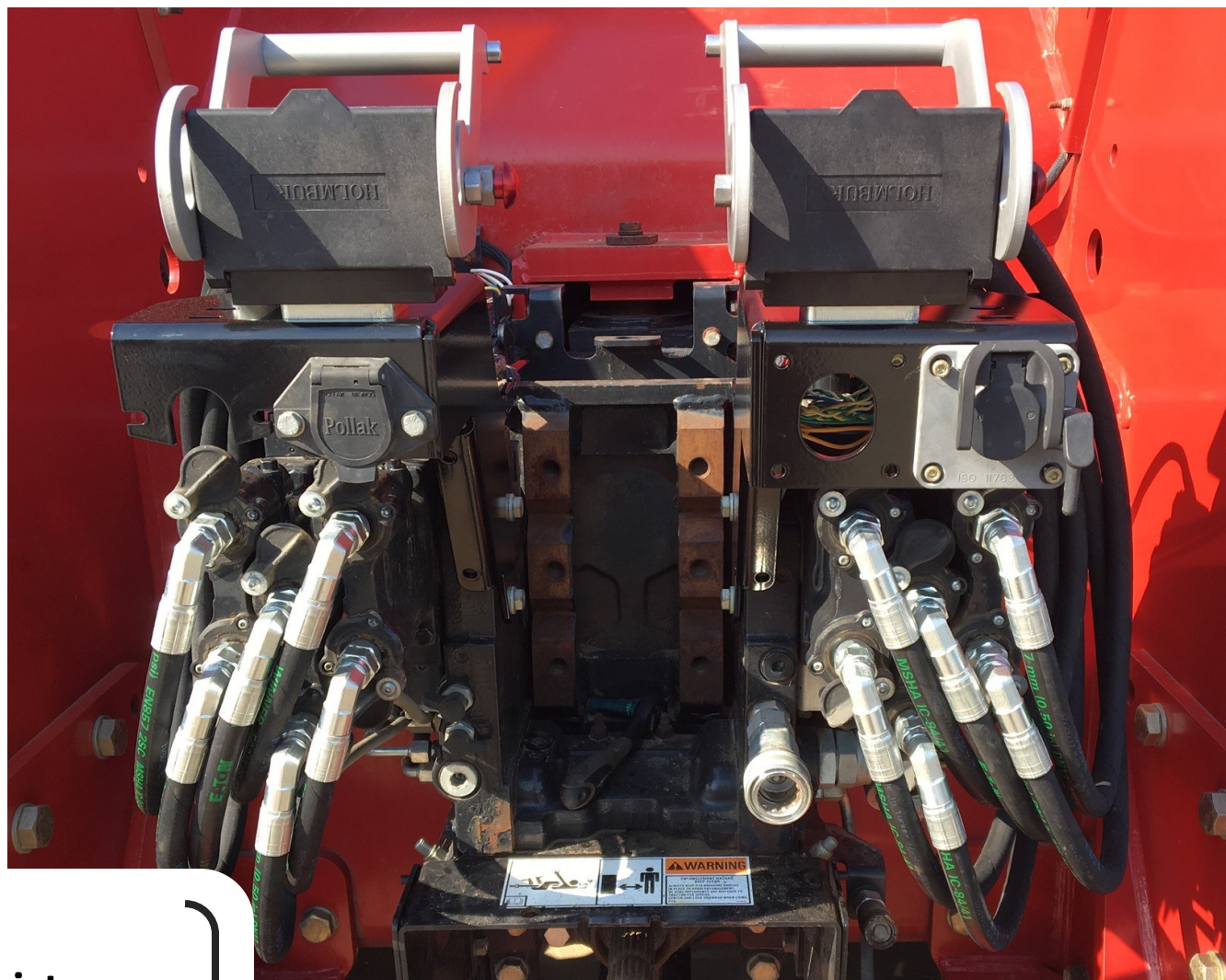
Refer to Figure 5

5. After installing the single point blocks, reinstall the previously removed connectors.

Follow the additional instructions provided to install blocks and route hoses/fittings correctly.

Figure 5





**For further technical assistance,
Call Lankota Inc. at:
1-866-526-5682**