

LANPSP600K & LANPSP600EK

Installation Instructions

John Deere 600 Series Poly Corn Head Snout Protectors

LANKOTA[®]

270 West Park Avenue

Huron, SD 57350

866-526-5682

Numerical Parts List

Part Numbers	Description	Quantity
LANPSP600K	600 Series Poly Snout Protector	1 Row Unit
LANPSP601L	Poly Snout Protector – Left Side	1
LANPSP601R	Poly Snout Protector – Right Side	1
LANPSP603	Steel Shim Plate	4
LANPSP600BH	Bag of Hardware	1
	1/4" x 1.75" SS BHCS	13
	1/4" Washer	13
	1/4" Nyloc Nut	13
	#14 x 3/4" SS Screw	19
LANPSP600EK	600 Series End Snout Protector	1 Per Head
LANPSP602L	Poly Snout Protector Right End Row, Inside	1
LANPSP602R	Poly Snout Protector Left End Row, Inside	1
LANPSP604L	Poly Snout Protector Left End Row, Outside	1
LANPSP604R	Poly Snout Protector Right End Row, Outside	1
LANPSP603	Steel shim plate	4
LANPSP600EBH	Bag of Hardware	1
	1/4" X 1.25" SS bolt	12
	1/4" Washer	12
	1/4" Nyloc Nut	12
	#14 x 3/4" SS Screw	48

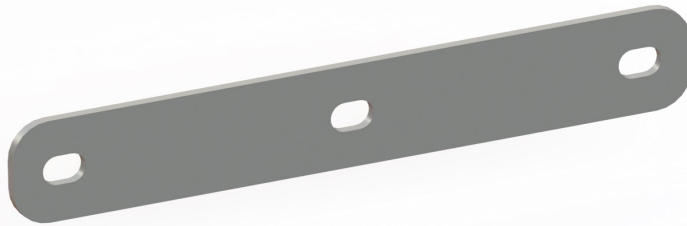
Pictorial Parts List



LANPSP601L & LANPSP601R



LANPSP602L & LANPSP602R



LANPSP603



LANPSP604L & LANPSP604R



LANPSP600BH



LANPSP600EBH

Preparation

If header is installed on combine:

1. Raise header to proper height for installation of kits.
2. Turn combine engine off.
3. Set parking break.

Installation

Refer to Figure 1

1. Remove all black plastic wear plates from all snouts.
2. Install end row outside snout protector (LANPSP604L) to outside of left end snout. Attach using fifteen of the (#14 x 3/4") screws.
3. Repeat on right hand side of head with end row outside snout protector (LANPSP604R).

Note: the 1/4" x 1.25" Bolts and LANPSP603 shims replace the black wear plates that are removed.

Figure 1



Installation

Refer to Figure 2

4. Install end row inside snout protector (LANPSP602R) and two shims (LANPSP603) to inside of left end snout using six of the 1/4" x 1.75" bolts, 1/4" washers & 1/4" nyloc nuts and nine of the #14 x 3/4" screws.
5. Repeat on right hand side of header with end row inside snout protector with (LANPSP602L) and two shims (LANPSP603).

Refer to Figure 3

6. Install standard snout protectors (LANPSP601R) and two shims (LANPSP603) to right side of remaining snouts using six of the 1/4" x 1.75" bolts, washers & nyloc nuts and nine of #14 x 3/4" screws per side.
7. Repeat for left side of remaining snouts using standard snout protectors (LANPSP601L).

For further technical information,

contact Lankota Inc. at:

1-866-526-5682



Figure 2

Figure 3

