

LANMF4468

Installation Instructions

Mud Flaps for CIH Sprayers with WIDE Fenders (84484468) - (1 Pair)

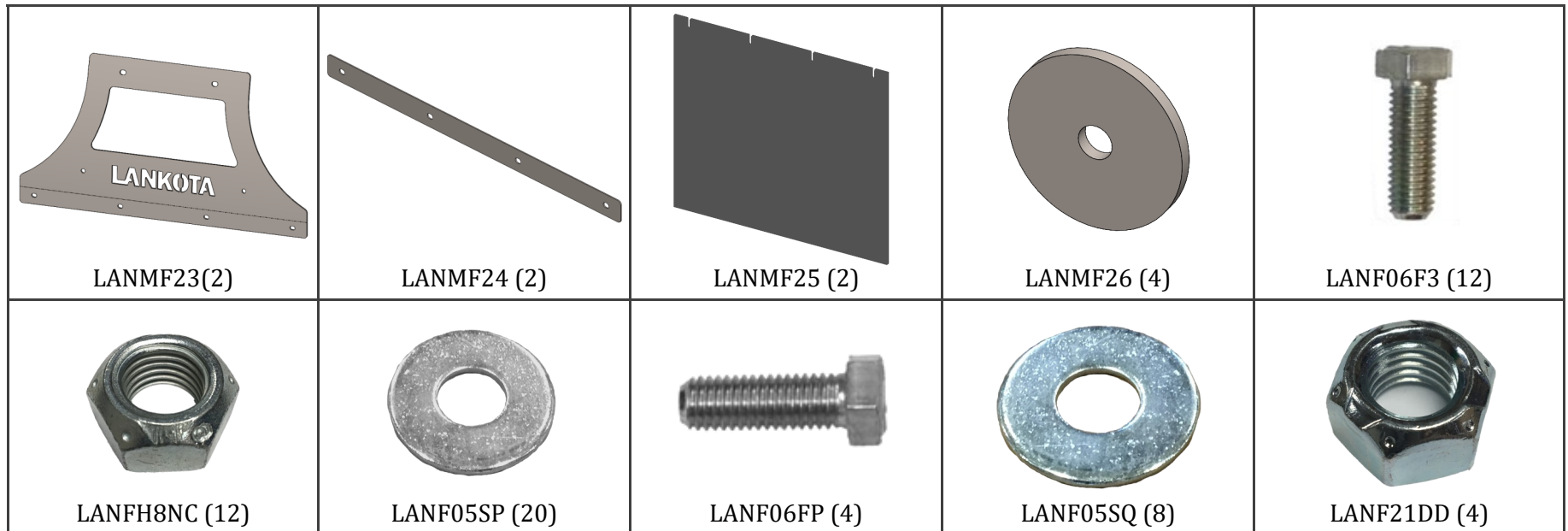
Fits CIH Models: 3310, 3320, 4420, 3230, 3330, 4430, 2240, 3240, 3340, 4440, 2250 and 5550

LANKOTA®

270 West Park Avenue
Huron, SD 57350
866-526-5682

Numerical Parts List

Part Numbers	Description	Qty
LANMF23	Sprayer Mud Flap Mount	2
LANMF24	Mud Flap Clamp Plate	2
LANMF25	Sprayer Mud Flap (26x24)	2
LANMF26	Mud Flap Fender Washer	4
LANMFBH1	5/16" Mud Flap Bag of Hardware	2
LANF05SP	5/16" SS Flat Washer	10
LANFH8NC	5/16" SS Top Lock Nut	6
LANF06F3	5/16" x 1" SS Hex Bolt	6
LANMFBH2	3/8" Mud Flap Bag of Hardware	1
LANF06FP	3/8" x 1.25" SS Hex Bolt	4
LANF05SQ	3/8" SS Flat Washer	8
LANF21DD	3/8" SS Top Lock Nut	4



Kit Installation



Figure 1

Refer to Figures 1 - 4

1. Remove the hardware and outer plate from the back mount point of the fender.
2. Mount the mud flap mount (LANMF23) through the fender to the fender bracket with the 3/8" hardware.
3. Using a 11/32" drill bit, through the shown holes, drill holes in the fender.
4. Push a 5/16" bolt and washer through the holes.
5. Secure them in place with a fender washer (LANMF26) and a 5/16" top lock nut.



Figure 2



Figure 3



Figure 4

Kit Installation



Figure 5

Figure 6



Refer to Figures 5—7

6. Mount the mud flap (LANMF25) to the mount with the 5/16" hardware and clamp plate (LANMF24).
7. Tighten all hardware.
8. Repeat on other wheel.



WARRANTY STATEMENT

Lankota Warranty only covers products produced by LANKOTA and does not cover parts made and/or sold by other aftermarket manufacturers, or the original manufacturer, or that were part of the original equipment's construction.