

LANBSJD18

Installation Instructions

Lankota Bean Saver Brush Kit for JD® 200, 900 & 600 Series Non-Draper Platform Heads

5' Section

LANKOTA®

270 West Park Avenue
Huron, SD 57350
866-526-5682

Numerical Parts List

Part Numbers	Description	Qty
LANBSFLX07	JD HydraFlex Mounting Bracket	1
LANBSFLX08A	Beam Clamp A	1
LANBSFLX08B	Beam Clamp B	1
LANBS6FD01	Bean Saver Brush	1
LANBS6FD02-03	Brush Holder - Bottom	1
LANBS6FD02-04	Brush Holder - Top	1
LANMCHN-40	112lb Neodymium Cup Magnet	8
LANFH1H2M	10-24 x 7/8" Flat Head Screw	8
LANFF0DNU	10-24 Nyloc Nut	8
LANFHNOMJ	Rubber Washer	8
LANNAS2	5/16" Serrated Flange Nut	4
LANFXG26	5/16" x 3/4" Carriage Bolt	4
LANBSBH	Bag of Hardware	1
LANFXG26	5/16" x 3/4" Carriage Bolt	7
REDKRJ8	5/16" Top Lock Nut	7

Preparation

1. Lower the reel and move forward as far as possible.
2. Set the header on the ground or a header trailer.
3. Unhook the head from the combine and back it away.

Pictorial Parts List

 <p>LANBSFLX07 (1)</p>	 <p>LANBSFLX08A (1)</p>	 <p>LANBSFLX08B (1)</p>	 <p>LANMCHN-40 (8)</p>	 <p>LANFH1H2M (8)</p>
 <p>LANBS6FD01 (1)</p>	 <p>LANBS6FD02-03 (1)</p>	 <p>LANBS6FD02-03 (1)</p>	 <p>LANFHN0MJ (8)</p>	 <p>LANFFODNU (8)</p>
 <p>LANNAS2 (4)</p>	 <p>REDKRJ8 (7)</p>	 <p>LANFXG26 (11)</p>		

Kit Installation

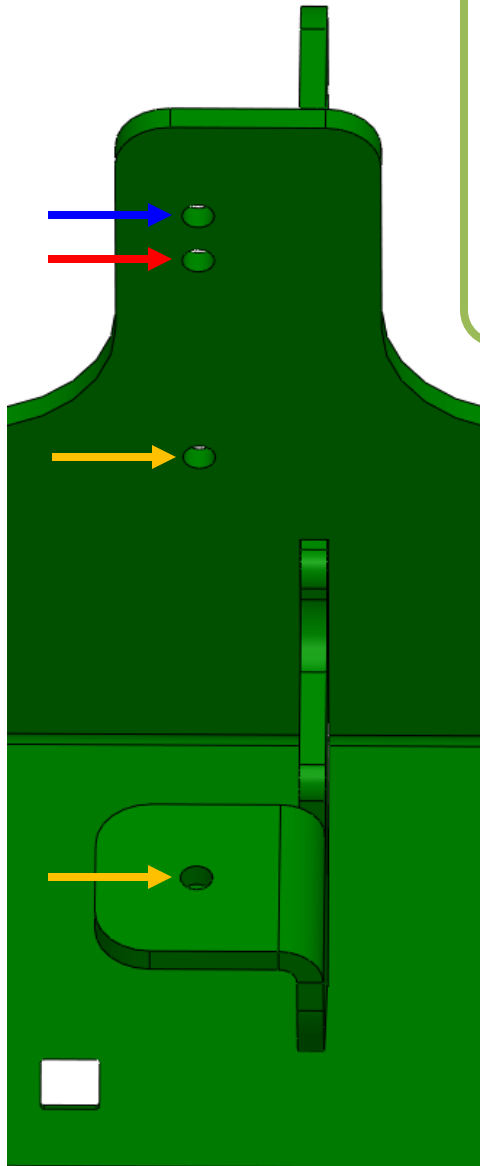


Figure 1

Refer to Figures 1 - 3

1. Fasten (6) of the magnets (LANMCHN-40) to the Mounting Bracket (LANBSFLX07) [3 on each side] using a screw (LANFH1H2M), rubber washer (LANFHN0MJ) and nyloc nut (LANFF0DNU) for each.
Note: Always use the **gold** holes. If the brush is going over the feeder house, use the **blue** holes. If it's covering a side of the head, use the **red** holes.
2. Tighten the magnets only until snug. Do not squish the rubber washer. This ensures they completely adhere to the header frame.
3. Fasten a magnet onto the beam clamps (LANBSFLX08A & B) in the same manner (Figure 3).

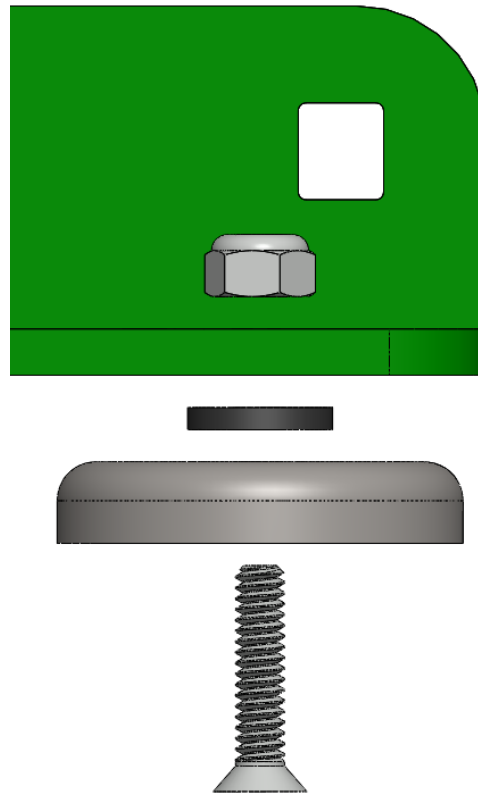


Figure 2

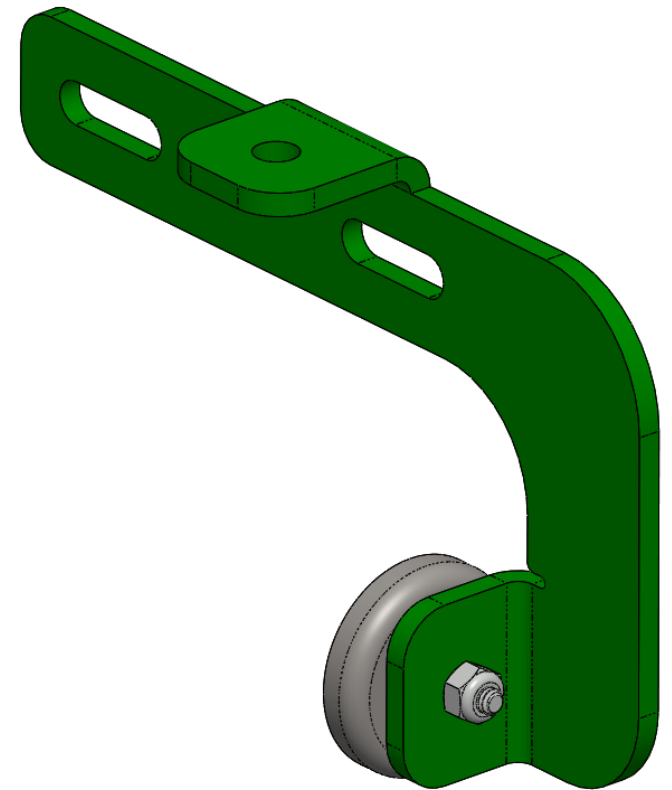
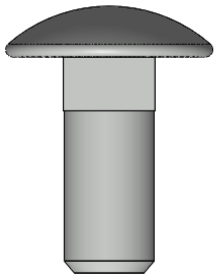


Figure 3

Kit Installation

Figure 4



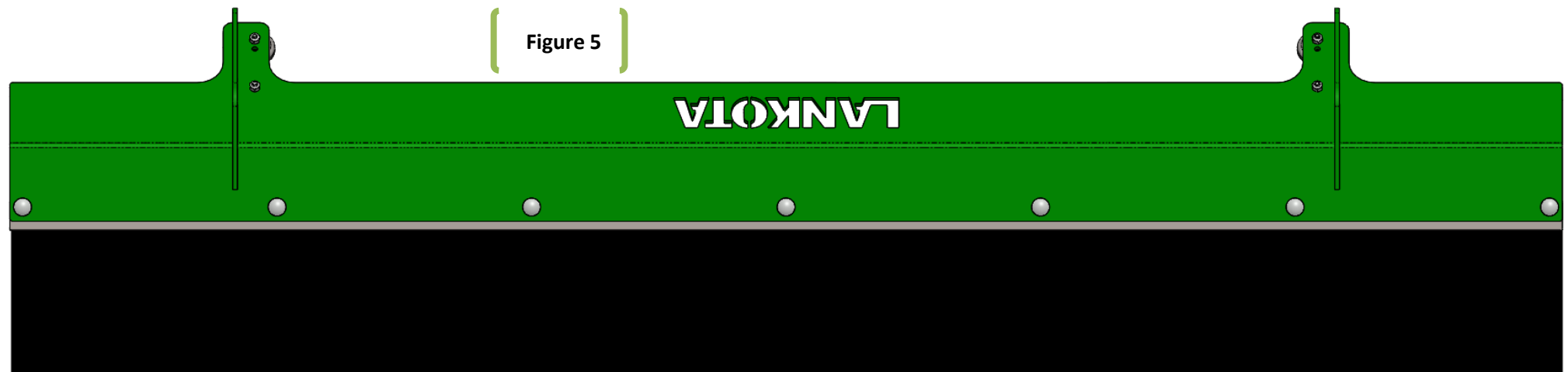
Refer to Figures 4 - 6

4. Connect the brush and holders (LANBS6FD02-03 & LANBS6FD02-04) to the mounting bracket with 5/16" carriage bolts (LANFXG26) and top lock nuts (REDKRJ8). Fasteners can be found in the LANBSBH bag of hardware.
5. Slide the brush into the holders and tighten all the bolts, clamping down the brush.
6. Find the center point of the head with a tape measure and mark on the top of the beam.

Figure 6



Figure 5



Kit Installation

Refer to Figures 7 - 9

7. Set the mounting bracket, brush and magnet assembly on the head: set the edge of the front magnets against the frame, line the center mark on the head with the edge of the brush (if using an even number of brushes) or the center of the brush (if using an odd number). Rotate the bracket on its edge so the top (4) magnets meet the top of the beam.

Note: Once the top magnets are set down, it is very difficult to adjust the brush position.

8. Ensure all the magnets are firmly against the head.



Figure 7



Figure 9

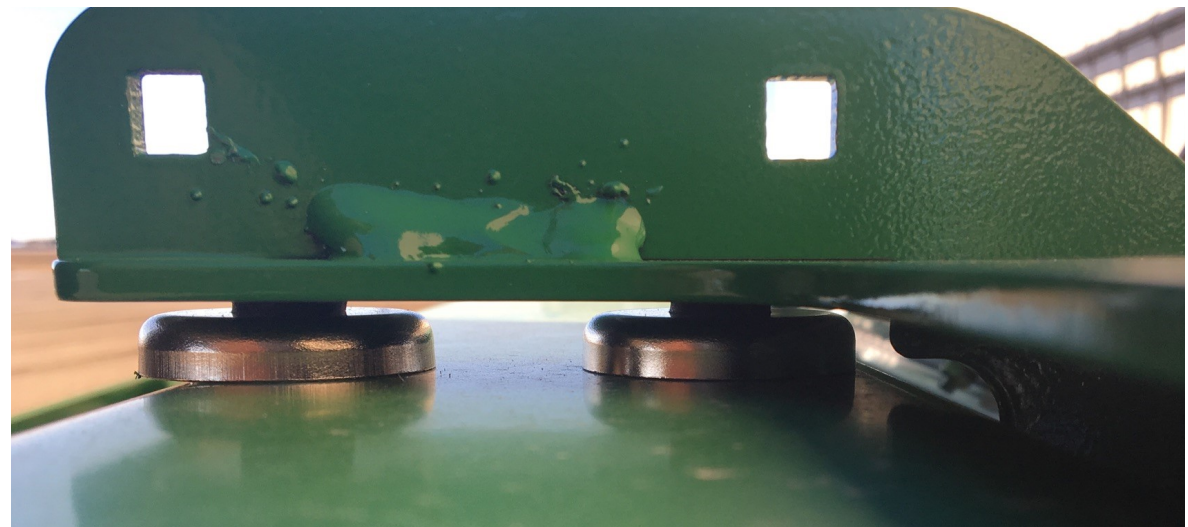


Figure 8

Kit Installation

Refer to Figures 10 & 11

9. To mount the beam clamps, hold the clamp at a 30-45° angle as shown, press the edge of the magnet against the beam and rotate the clamp down.

Note: the clamps go on the inner side of the mounting bracket with the flanges facing inward, so the magnets are all aligned.

10. Press a carriage bolt (LANFXG26) through each slot and fasten with a flange nut (LANNAS2) and tighten.

Figure 10



Figure 11



Kit Installation

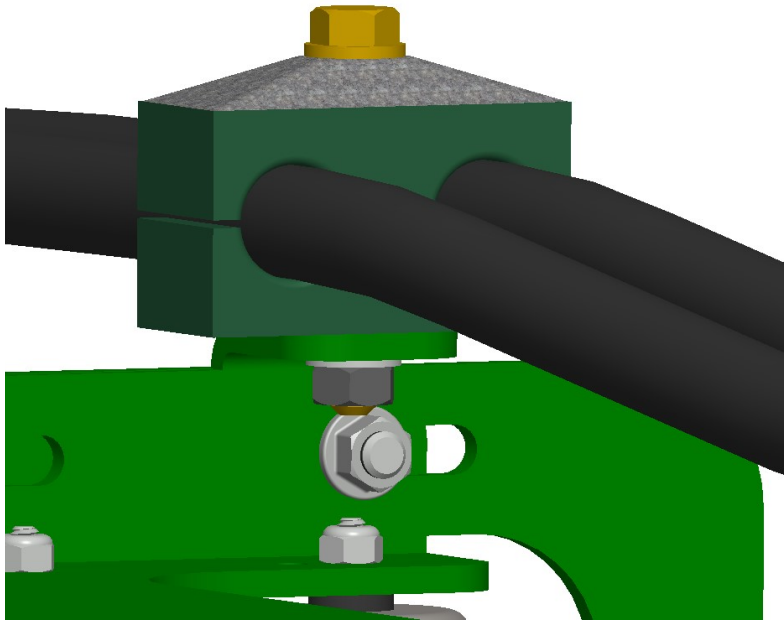
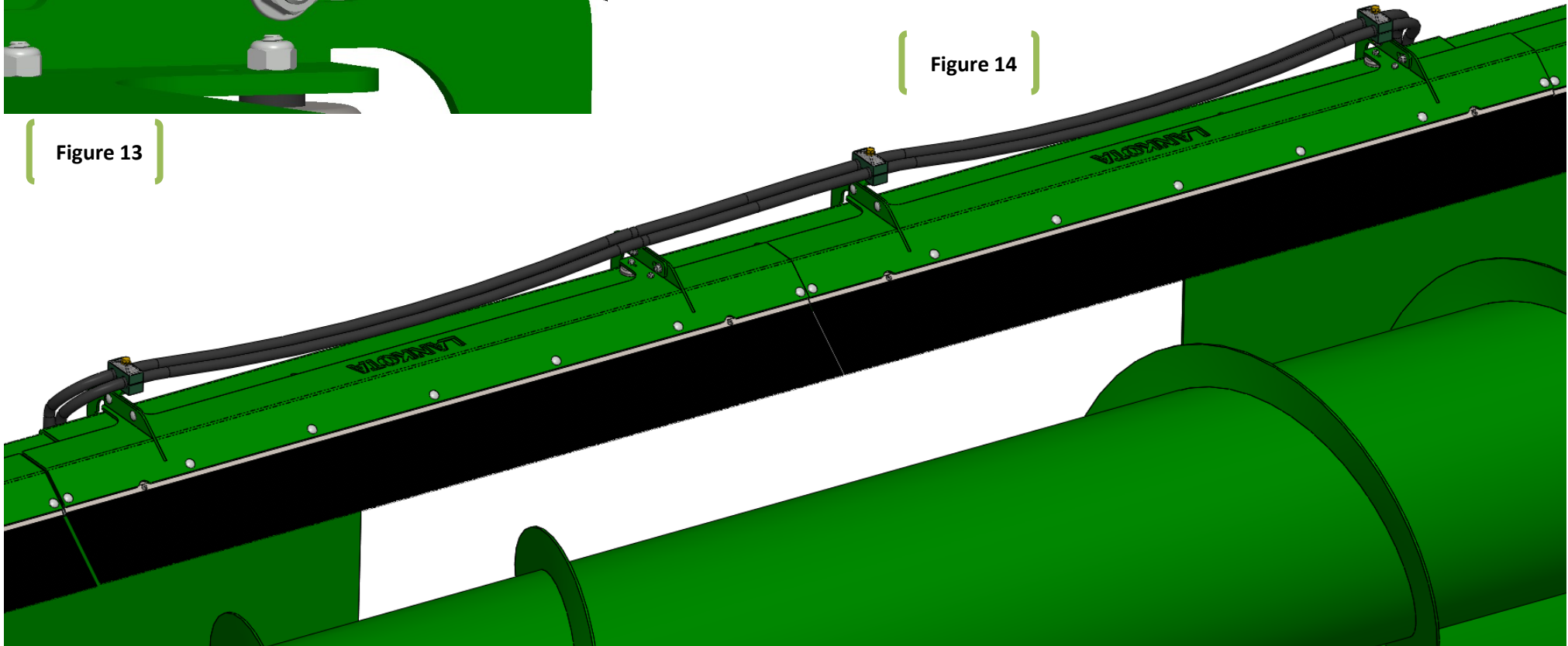


Figure 13

Refer to Figures 11 & 12

11. If the brush kit is going on a JD header that has Lankota kit LAN84151, LAN84151NE, LAN84152 or a LAN84152NE, then the hoses that run over top of the feederhouse opening and the holders (LAN120847 & LAN112567) will use the tabs on top of the bracket clamps (LANBSFLX08A & B).
12. Use the M8 x 60mm bolts from the previously mentioned kits to secure the hoses to the clamps. A M8 nut (not provided) will be needed for each.

Figure 14





For further technical assistance,

Call Lankota Inc. at:

1-866-526-5682