

LAN2PT1575

Installation Instructions

John Deere® Two Point Pull Corn Planter 7.5" Off-set Hitch

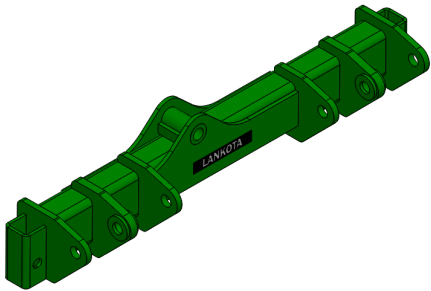
LANKOTA®

270 West Park Avenue
Huron, SD 57350
866-526-5682

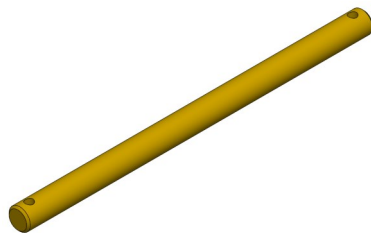
Numerical Parts List

Part Numbers	Description	Qty
LAN2PT1575	John Deere® Two Point Pull Corn Planter Off-set Hitch	1

Pictorial Parts List



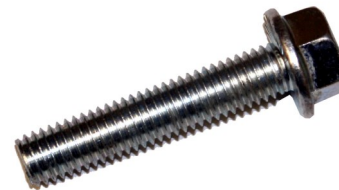
LAN2PT350W (1)



LANHW6974 (2)



LANF3231 (1)



LANFLY28 (4)



LANFNXC1 (4)

Preparation

1. Pull the onto a level working surface.
2. Make sure forward most ground wheels are in the RAISED position.
3. Place blocks under the tongue of the planter so that it sits level.
4. Block planter transport wheels so planter cannot roll forward or backward.
5. Lower the planter onto the blocks and unhook from tractor.
6. Pull tractor out of the way.

Kit Installation

Refer to Figures 1 - 3

1. Remove the cotter pin securing the castellated nut on the horizontal pivot bolt. Retain pin for later use.
2. Using a 2-1/4" wrench and socket with breaker bar, remove the castellated nut and any washers from the horizontal pivot bolt. Retain all hardware for later use.



Figure 1

Kit Installation



Figure 2



Figure 3

Refer to Figure 4

3. Support two-point pivot factory hitch with chain or strap. Using a forklift or loader (or equivalent), take pressure off the horizontal pivot bolt.
4. Remove horizontal pivot bolt from factory hitch and attaching frame mount. Retain hardware for later use.
5. Remove factory horizontal hitch from unit and set aside.
6. Remove factory leg stands from factory horizontal hitch. Retain leg stands and hardware for later use.



Figure 4

Kit Installation

Refer to Figure 5

7. Support two-point pivot Lankota Off-set Hitch with chain or strap. Using a forklift or loader (or equivalent), support hitch in place to allow re-installation of the factory pivot bolt.
8. Install horizontal pivot bolt through hitch and attaching frame mount. Place original washers as were removed earlier.
9. Install castellated nut on horizontal pivot bolt. Tighten as much as possible while still allowing the Lankota Off-set hitch to pivot freely.
10. Index castellated nut as to allow for re-installation of the cotter pin.
11. Re-install cotter pin through castellated nut and secure properly.
- 12. Grease pivot pin properly.**
13. Using new pins, connect tractor two point arms to desired positioning on Lankota Off-set Hitch.
14. Raise planter off blocks.
15. Install factory leg stands on Lankota Off-set Hitch with positioning pins removed from original horizontal pivot hitch earlier.
16. Remove blocks.

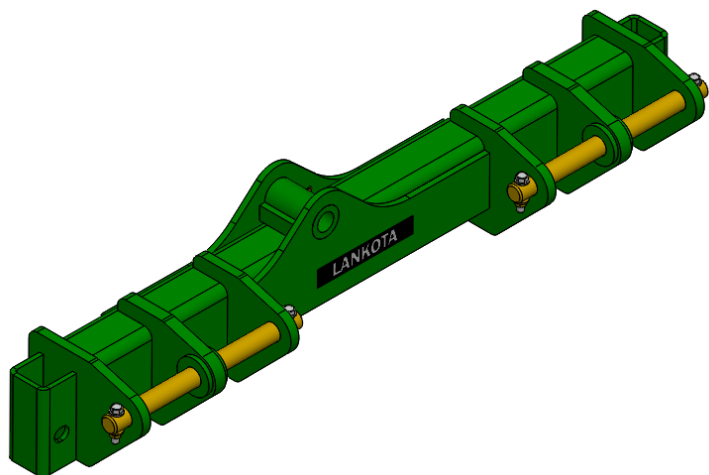


Figure 5

For further technical assistance,

Call Lankota Inc. at:

1-866-526-5682